

Great Egg Harbor National Scenic & Recreational River System

Zoning and Management Boundaries

Buena Vista Township
Atlantic County

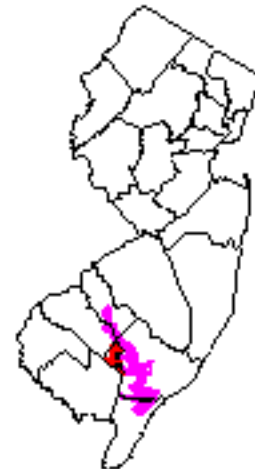
Legend

AP	AGRICULTURAL PRODUCTION
APC	AGRICULTURAL COMMERCE
FA1	FOREST AREA
EA2	FOREST AREA
PT	PINELANDS TOWN-COMMERCE
	PINELANDS VILLAGE
PV1	EXCLUSIVE INDUSTRY
PV11	RESIDENCE 2.5 ACRES
PV12	RESIDENCE 5 ACRES
PVRC	RESIDENCE/COMMERCE
	RURAL DEVELOPMENT
RDI	EXCLUSIVE INDUSTRY
RDR1	RESIDENCE
RDR1C	RESIDENCE/COMMERCE
RDR11	RESIDENCE/INDUSTRY
RDR2	RESIDENCE

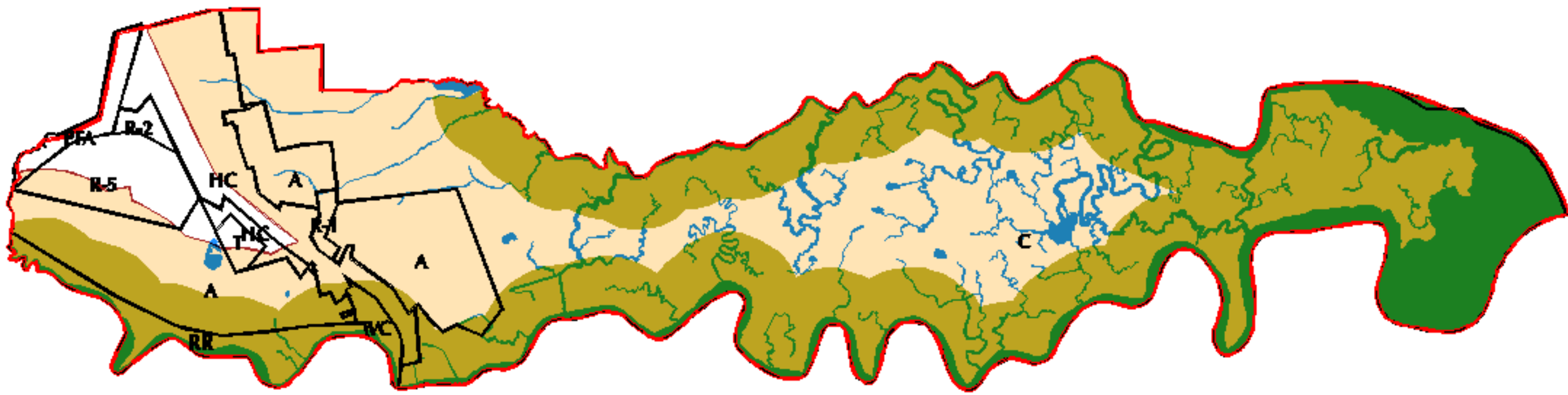
This map was prepared by the Atlantic County Office of Geographic Information Systems in cooperative with the National Park Service October 1997



Map Scale 1:28,000 or 1" = 2333.3'



UNOFFICIAL
ZONING MAP
FOR THE GREAT EGG HARBOR NATIONAL SCENIC & RECREATIONAL RIVER SYSTEM
BUENA VISTA TOWNSHIP
ATLANTIC COUNTY, NEW JERSEY
OCTOBER 1997



Great Egg Harbor National Scenic & Recreational River System

Zoning and Management Boundaries

Corbin 
Atlantic County



This map was produced by the Atlantic County Office of Geographic Information Systems in cooperation with the National Park Service June 1999

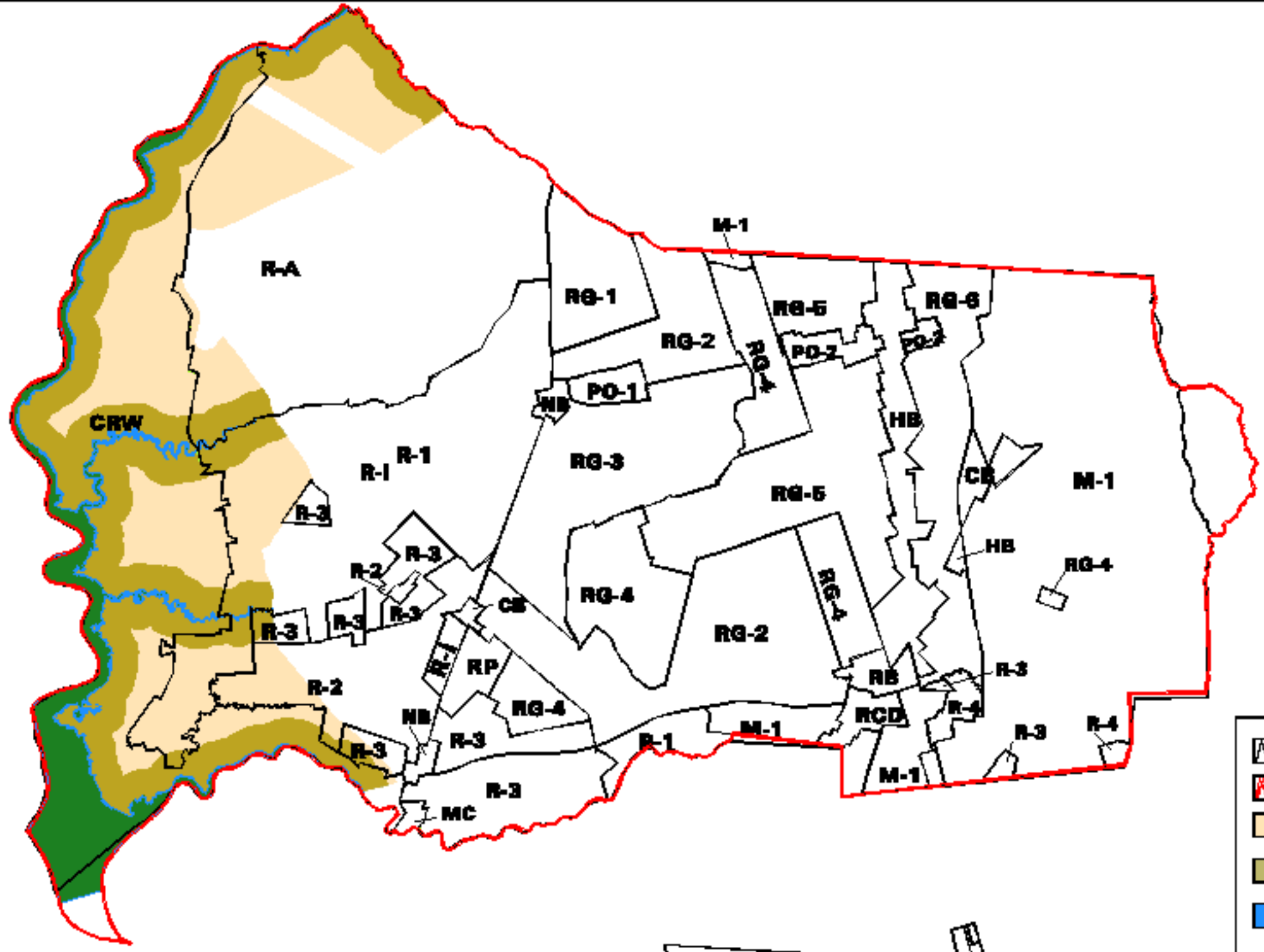


Legend

-  Municipal Boundary
-  Zoning Lines
-  Recommended Local Management Boundary
-  Scenic & Recreational Designated Boundary
-  Water Bodies

Zoning Key

- A** Agricultural Conservation
- C** Conservation
- HC** Highway
- PFA** Pinelands Forest Area
- R-1** 1 Acre Residential
- R-2** 2 Acre Residential
- R-5** 5 Acre Residential
- RR** River Residential
- T** Trailer Zone
- VC** Village Commercial



Map Legend

- Zoning Uses
- Municipal Boundary
- Local Management Boundary
- Federal Scenic & Recreational Designated Boundary
- Water Bodies



Great Egg Harbor National Scenic & Recreational River System

Zoning and Management Boundaries

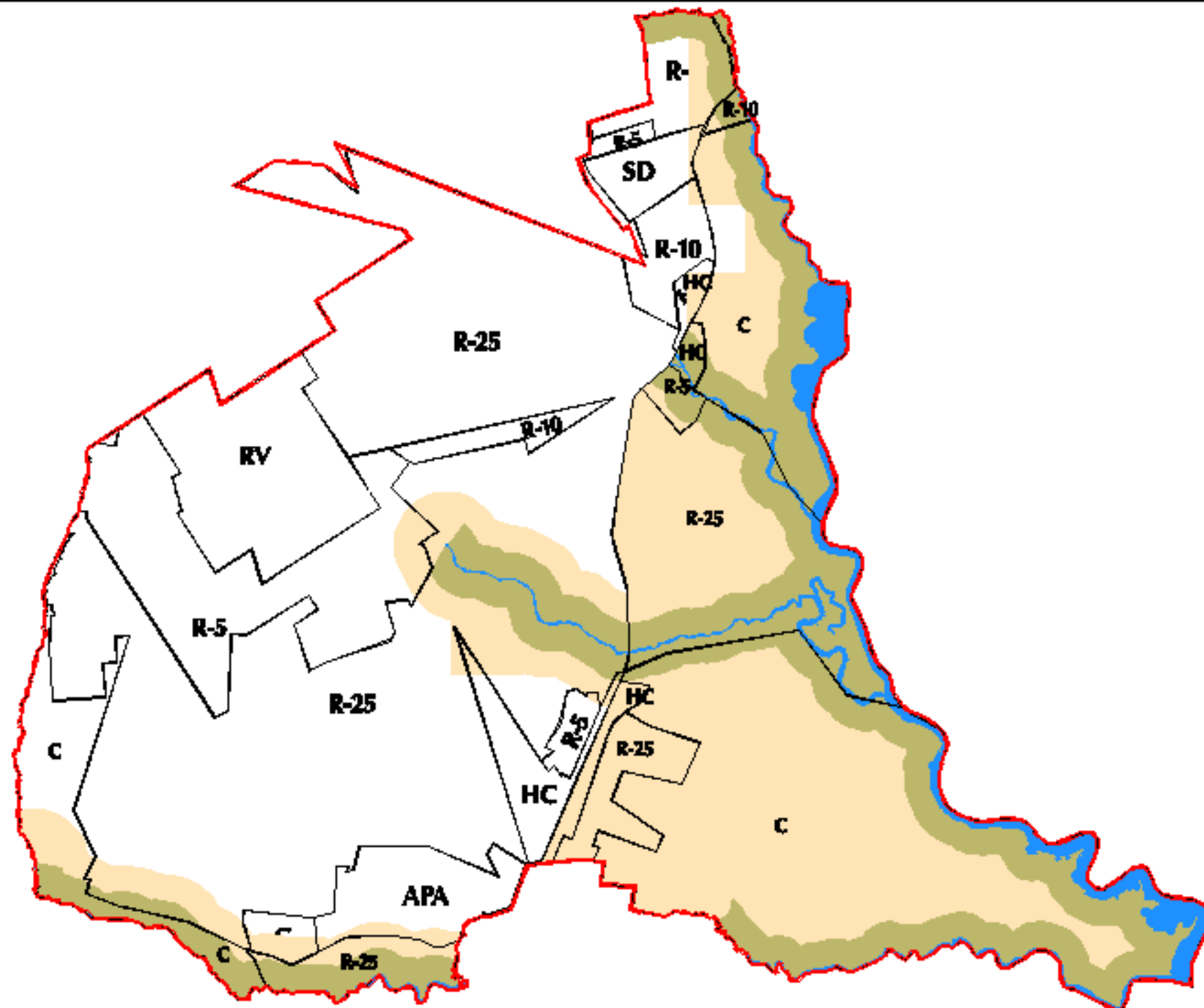
Egg Harbor Township
Atlantic County



This map was produced by the Atlantic County Office of Geographic Information Systems in cooperation with the National Park Service June 1999

Zoning Key

BUSINESS	RESIDENTIAL
CE COMMUNITY	R-1 through R-5 RESIDENTIAL
NB HIGHWAY	RG-1 through RG-6 GROWTH
NB NEIGHBORHOOD	RA AGRICULTURAL
RB REGIONAL	
PO-1 PROFESSIONAL OFFICE	SHD SPECIAL HIGHWAY DEVELOPMENT
PO-2 PROFESSIONAL OFFICE	CRW CONSERVATIONAL-RECREATIONAL-WETLANDS
RCD REGIONAL COMMERCIAL	RP RECREATIONAL PARK
MC MARINE COMMERCIAL	
M-1 LIGHT INDUSTRIAL	
R-1 RESTRICTED INDUSTRIAL	



Legend

	Zoning Lines
	Municipal Boundary
	Local Management Boundary
	Federal Scenic & Recreational Designated Boundary
	Water Bodies

Great Egg Harbor National Scenic & Recreational River System

Zoning and Management Boundaries

Estell Mando
Atlantic Co

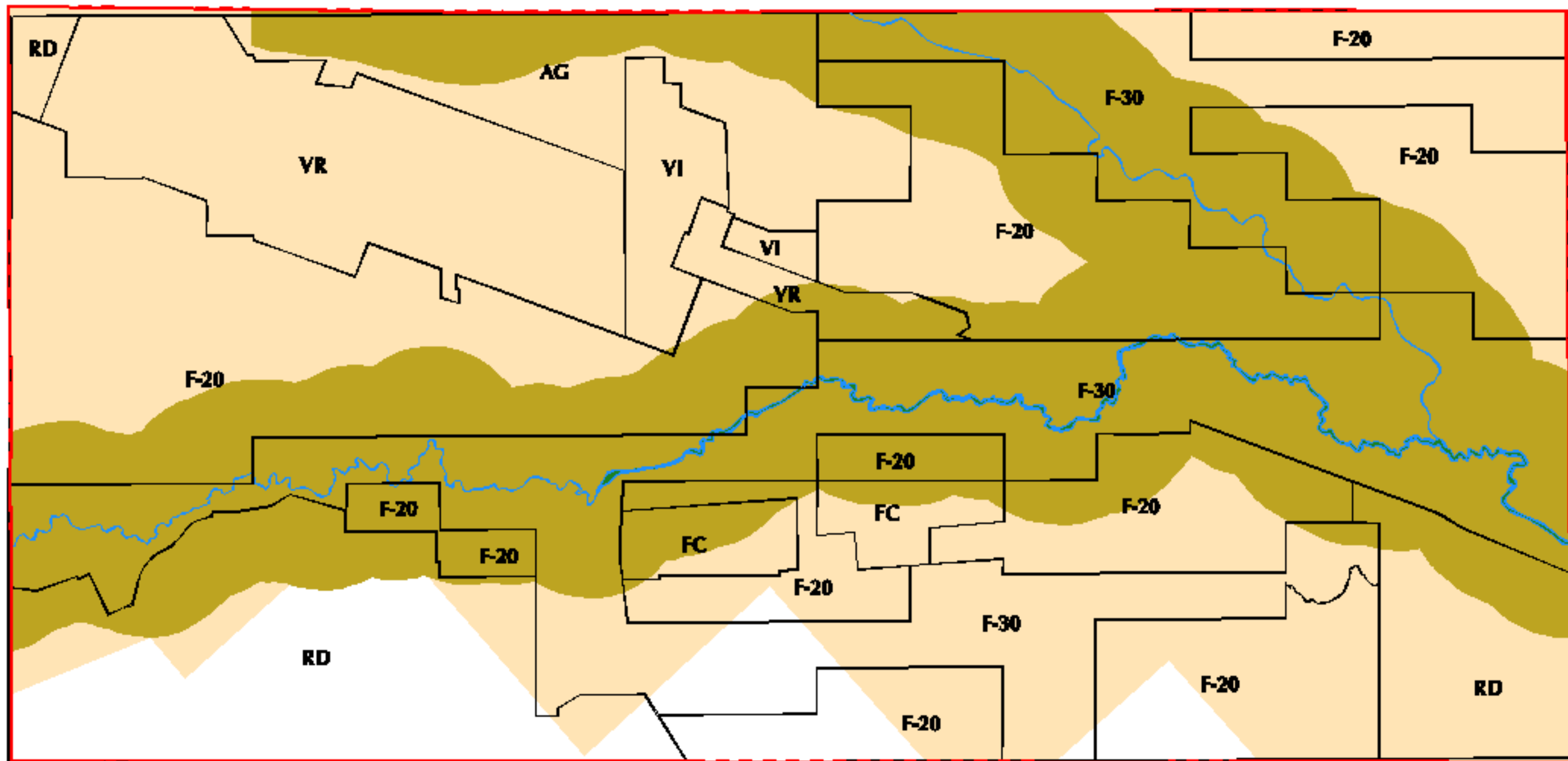
This map was produced by the Atlantic County
Office of Geographic Information Systems
in cooperation with the National Park Service
June 1999



Map Scale: 1:54,000 or 1" = 2833.3'

RESIDENTIAL	
R-10	10 ACRE LOTS
R-25	25 ACRE LOTS
R-5	5 ACRE LOTS
RV	VILLAGE RESIDENCE 5 ACRE LOTS
OTHER	
C	CONSERVATION
HC	HIGHWAY COMMERCIAL
APA	AGRICULTURAL PRODUCTION AREA - 10 ACRE LOTS
SD	SPECIAL DISTRICT 1 ACRE LOTS





Great Egg Harbor National Scenic & Recreational River System Zoning and Management Boundaries



Map Scale 1:8000
or 1" = 666.7'

*This map was prepared by the Atlantic County
Office of Geographic Information Systems
in cooperation with the National Park Service
June 1999*

Folsom B
Atlantic Co

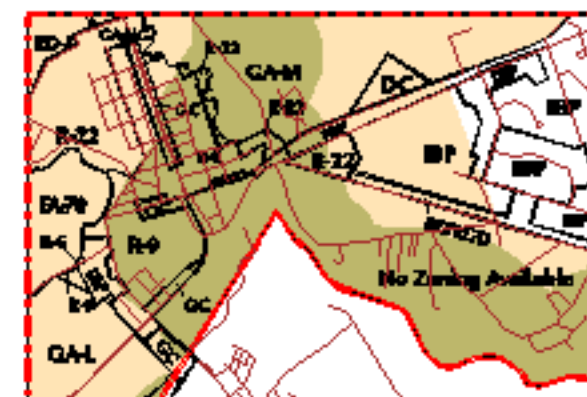
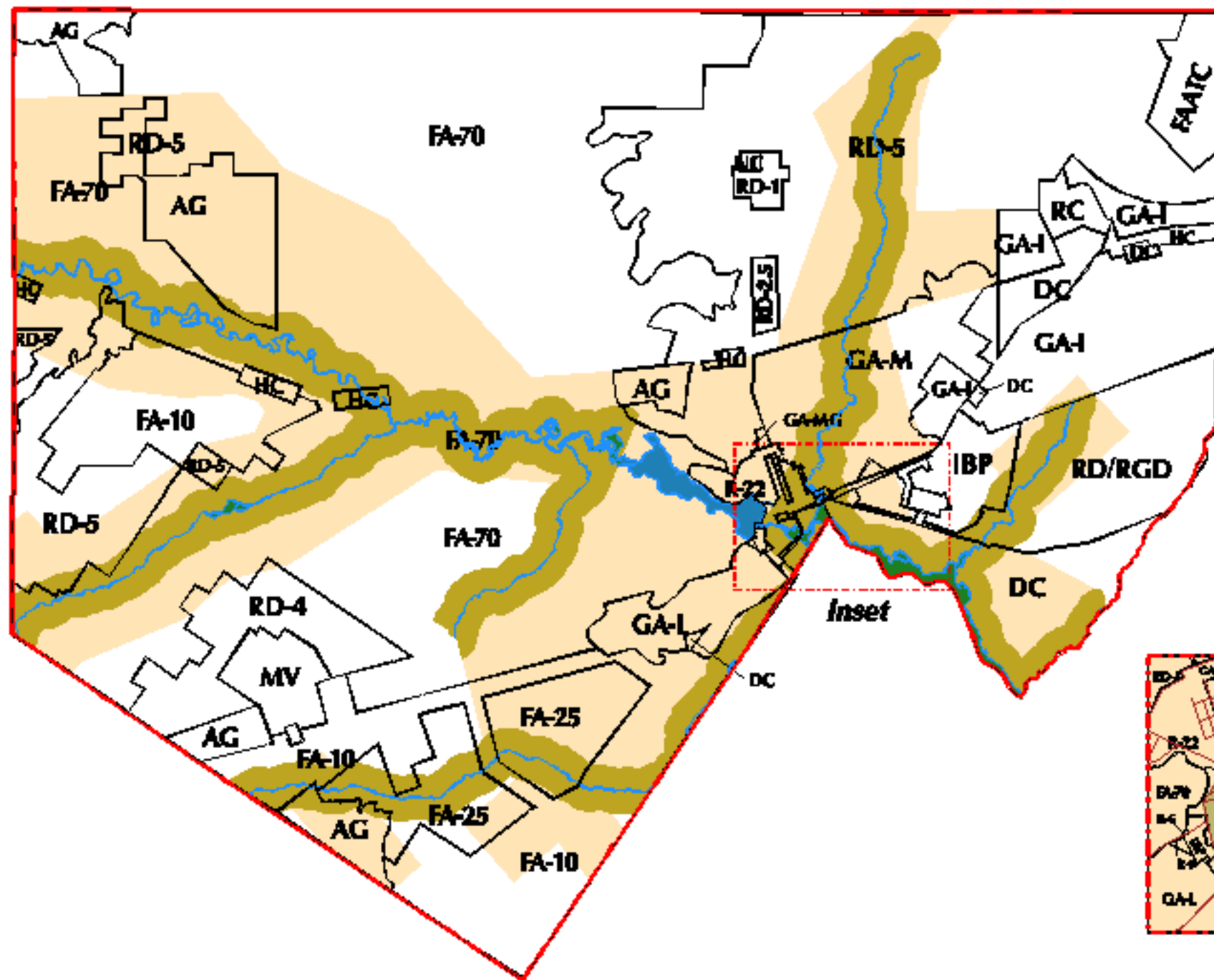


Map Legend

- Zoning Lines
- Municipal Boundary
- Local Management Boundary
- Federal Scenic & Recreational Designated Boundary
- Water Bodies

Zoning Key

- F-20 FOREST (20 ACRES)
- F-30 FOREST (30 ACRES)
- RD RURAL DEVELOPMENT
- AG AGRICULTURAL
- FC FOREST COMMERCIAL
- VR VILLAGE RESIDENTIAL
- VI VILLAGE INDUSTRIAL



Great Egg Harbor National Scenic & Recreational River System Zoning and Management Boundaries



Map Scale 1:63,060 or 1" = 3583.3'

This map was produced by the Atlantic County
Office of Geographic Information Systems
in cooperation with the National Park Service
June 1999

Hamilton Township
Atlantic County

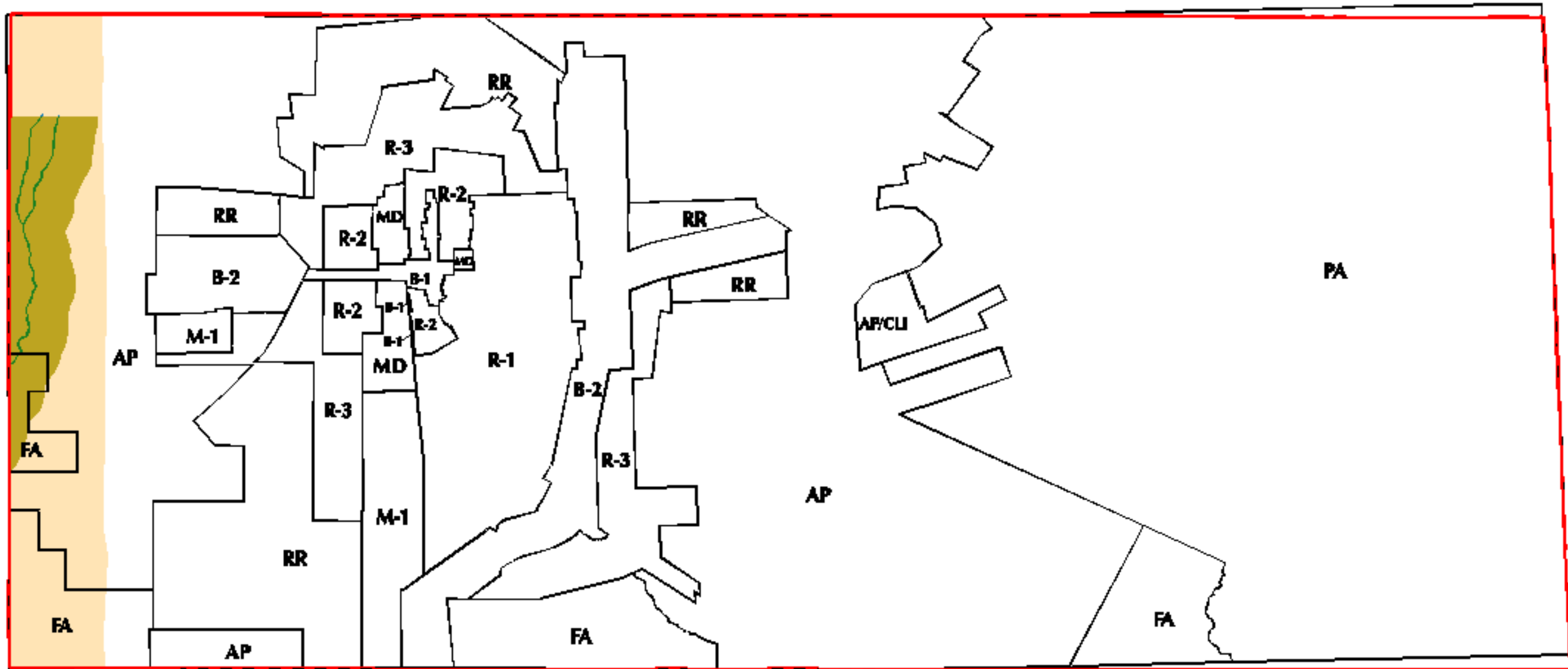


Map Legend

- Zoning Lines
- Municipal Boundary
- Local Management Boundary
- Federal Scenic & Recreational Designated Boundary
- Water Bodies

Zoning Key

DC	COMMERCIAL DESIGN	GA-I	GROWTH AREAS INTENSIVE
GC	GENERAL	GA-M	GROWTH AREAS MODERATE
HC	HIGHWAY	GA-L	GROWTH AREAS LOW
RC	RECREATIONAL	RD-2.5	EDUCATIONAL DEVELOPMENT
NC	NEIGHBORHOOD	RD-4	EDUCATIONAL DEVELOPMENT
FA-10	FOREST AREAS 10 ACRES	RD-5	EDUCATIONAL DEVELOPMENT
FA-25	FOREST AREAS 25 ACRES	RD-6	EDUCATIONAL DEVELOPMENT
FA-70	FOREST AREAS 70 ACRES	AG	AGRICULTURAL
B-22	RESIDENTIAL	MV	MIXED VILLAGE
B-9	RESIDENTIAL	GA-MG	MUNICIPAL GOVERNMENT BUILDING DISTRICT
IBP	INDUSTRIAL BUSINESS PARK	RD/RGD	INDUSTRIAL BUSINESS PARK
FAATC	FAA TECHNICAL CENTER		



Great Egg Harbor National Scenic & Recreational River System

Zoning and Management Boundaries



Map Scale 1:12,500 or 1" = 154.7'

This map was produced by the Atlantic County Office of Geographic Information Systems in cooperation with the National Park Service June 1999

Hammond
Atlantic Co

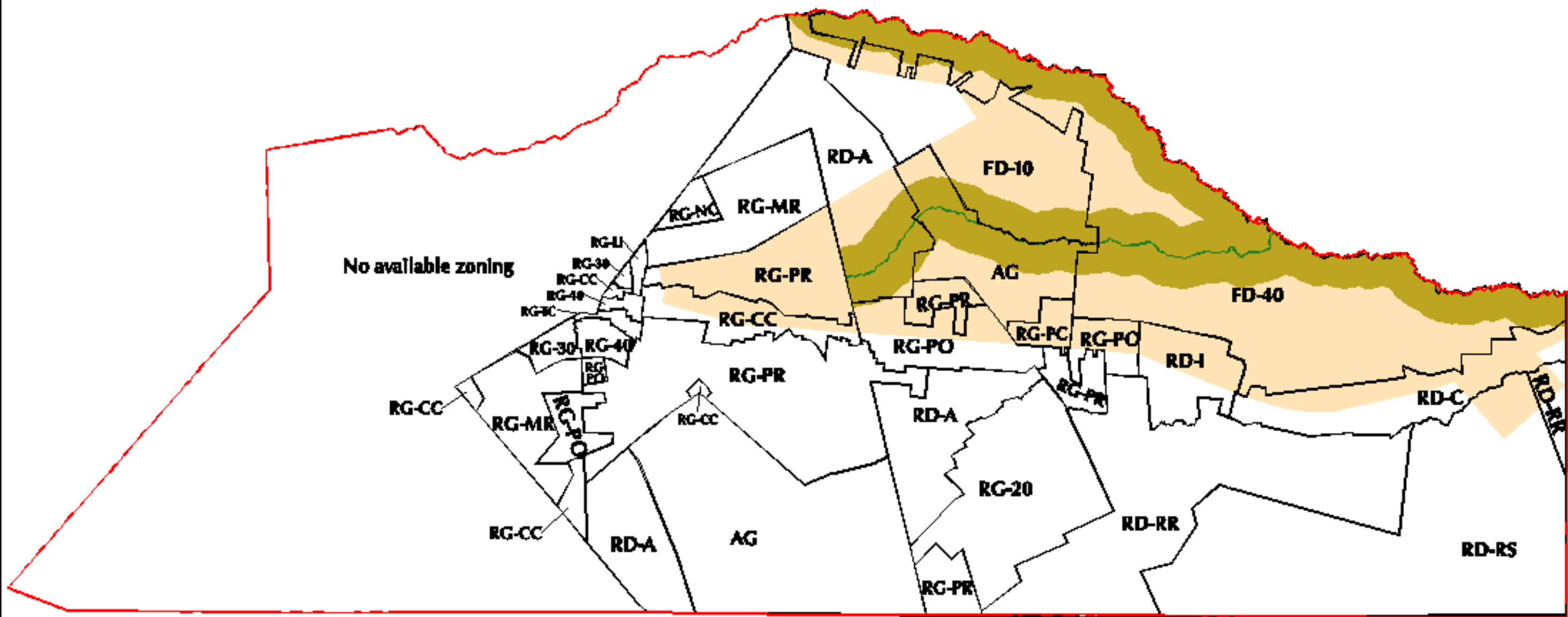


Map Legend

- Zoning Lines
- Municipal Boundary
- Local Management Boundary
- Federal Scenic & Recreational Designated Boundary
- Water Bodies

Zoning Key

AP	AGRICULTURAL PRODUCTION
AP/CLI	AGRICULTURAL PRODUCTION/ COMPATIBLE LIGHT INDUSTRY
B-1	TOWN BUSINESS
B-2	HIGHWAY BUSINESS
FA	FOREST AREA
M-1	INDUSTRIAL PARK
MD	MIXED USE
PA	PRESERVATION AREA
R-1	RESIDENTIAL - 1
R-2	RESIDENTIAL - 2
R-3	RESIDENTIAL - 3
RR	RURAL RESIDENTIAL



Great Egg Harbor National Scenic & Recreational River System

Zoning and Management Boundaries

Map Scale 1:22,500 or 1" = 1958.3'

This map was produced by the Atlantic County
 Office of Geographic Information Systems
 in cooperation with the National Park Service
 June 1999

Monroe Township
Gloucester County, NJ

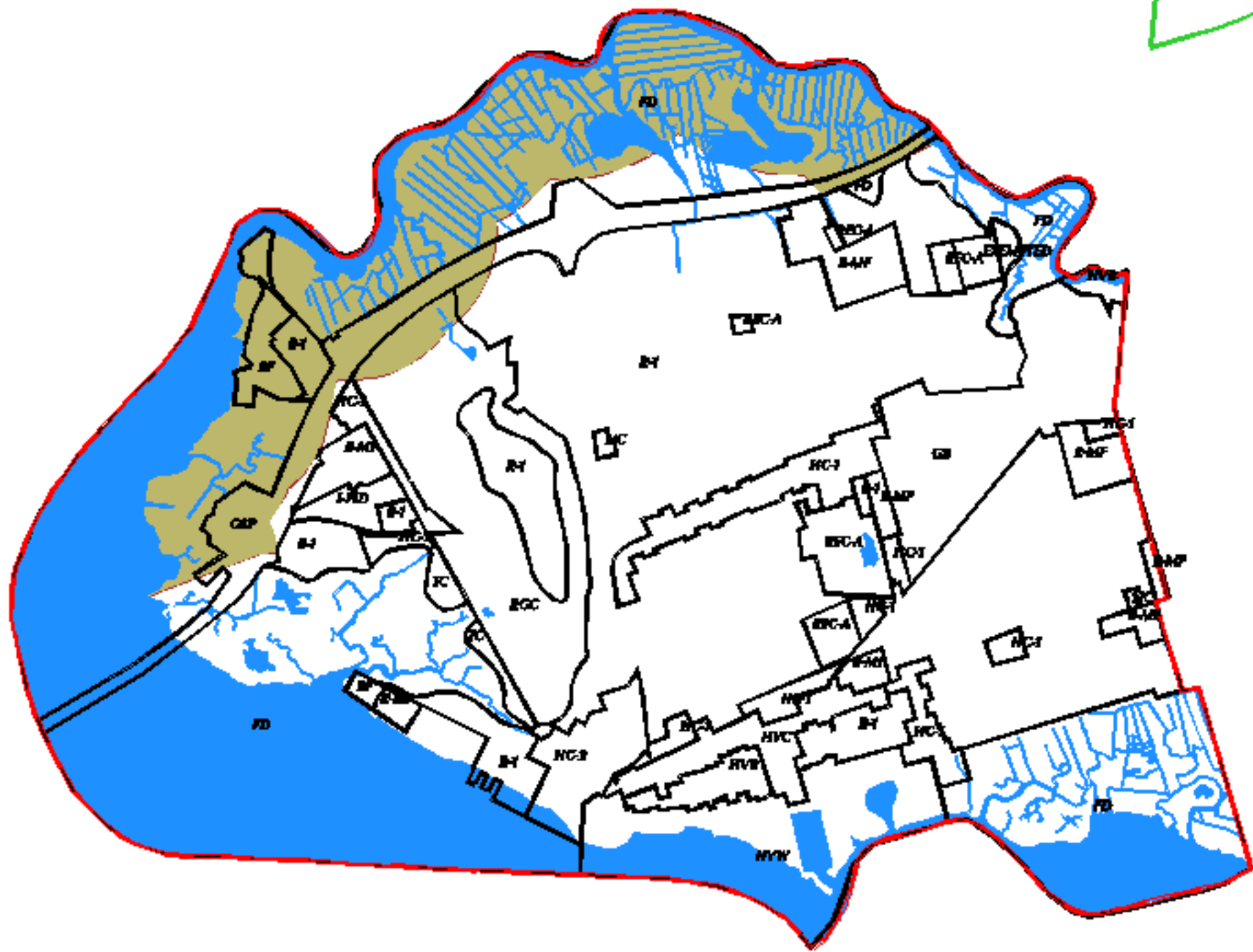


Map Legend

	Zoning Lines
	Municipal Boundary
	Local Management Boundary
	Federal Scenic & Recreational Designated Boundary
	Water Bodies

Zoning Key

AG AGRICULTURAL	REGIONAL GROWTH
FD-10 10 ACRES	RG-20 20 ACRES
FD-40 40 ACRES	RG-30 30 ACRES
RD-A AGRICULTURE	RG-40 40 ACRES
RD-C COMMERCIAL	RG-CC COMMUNITY COMMERCIAL
RD-RR RESIDENT RECEIVING	RG-LI LIGHT INDUSTRY
RD-RS RESIDENT SENDING	RG-MR MODERATE RESIDENTIAL
	RG-NC NEIGHBORHOOD COMMERCIAL
	RG-PC PLANNED COMMERCIAL
	RG-PO PLANNED OFFICE
	RG-PR PLANNED RESIDENTIAL
	RG-TC TOWN COMMERCIAL



Great Egg Harbor National Scenic & Recreational River System

Zoning and Management Boundaries

Somers Point
Atlantic County



This map was produced by the Atlantic County
Office of Geographic Information Systems
in cooperation with the National Park Service
June 1999

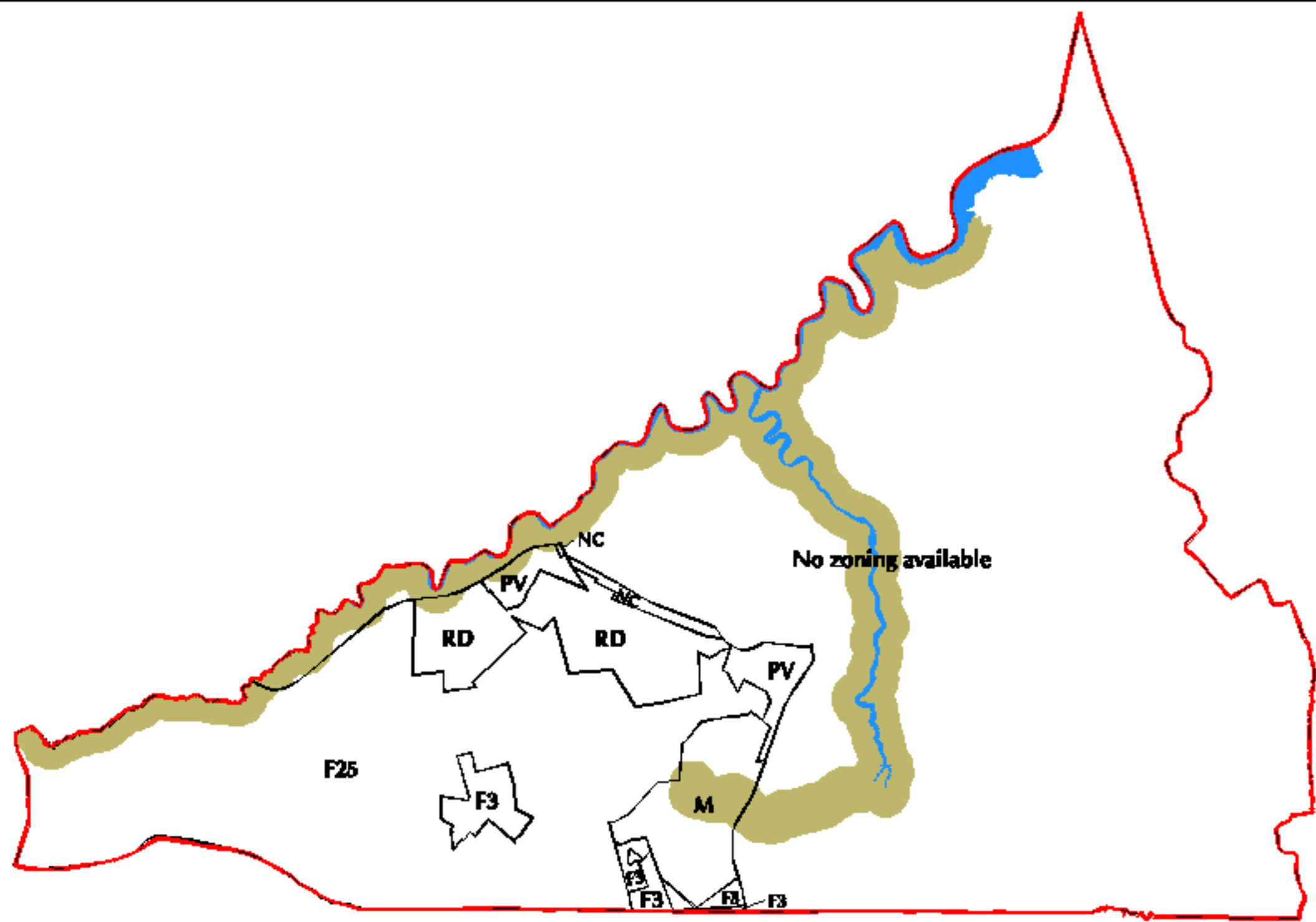


Map Legend

- Municipal Boundary
- Zoning Line
- Recommended Local Management Boundary
- Scenic & Recreational Designated Boundary
- Water Bodies

Zoning Key

- BF Bay Front District
- EXEMPTED Exempted
- FD Flood District
- BB General Business District
- GSP Garden State Parkway
- NC-1 Highway Commercial - One
- NC-2 Highway Commercial - Two
- HVC Historic Village Commercial
- HVR Historic Village Residential
- HVA Historic Village Waterfront
- LPI Planned Industrial District
- NC Neighborhood Commercial
- E-1 Single Family Residential
- E-MF Residential Multi Family
- EEC-A Recreational Land
- EEC Recreational Golf Course
- TC Transit Commercial



Great Egg Harbor National Scenic & Recreational River System Zoning and Management Boundaries



*This map was produced by the Atlantic County
Office of Geographic Information Systems
in cooperation with the National Park Service
June 1999*



Map Scale 1:36,000 or 1" = 3000'

**Upper Township
Cape May County, NJ**

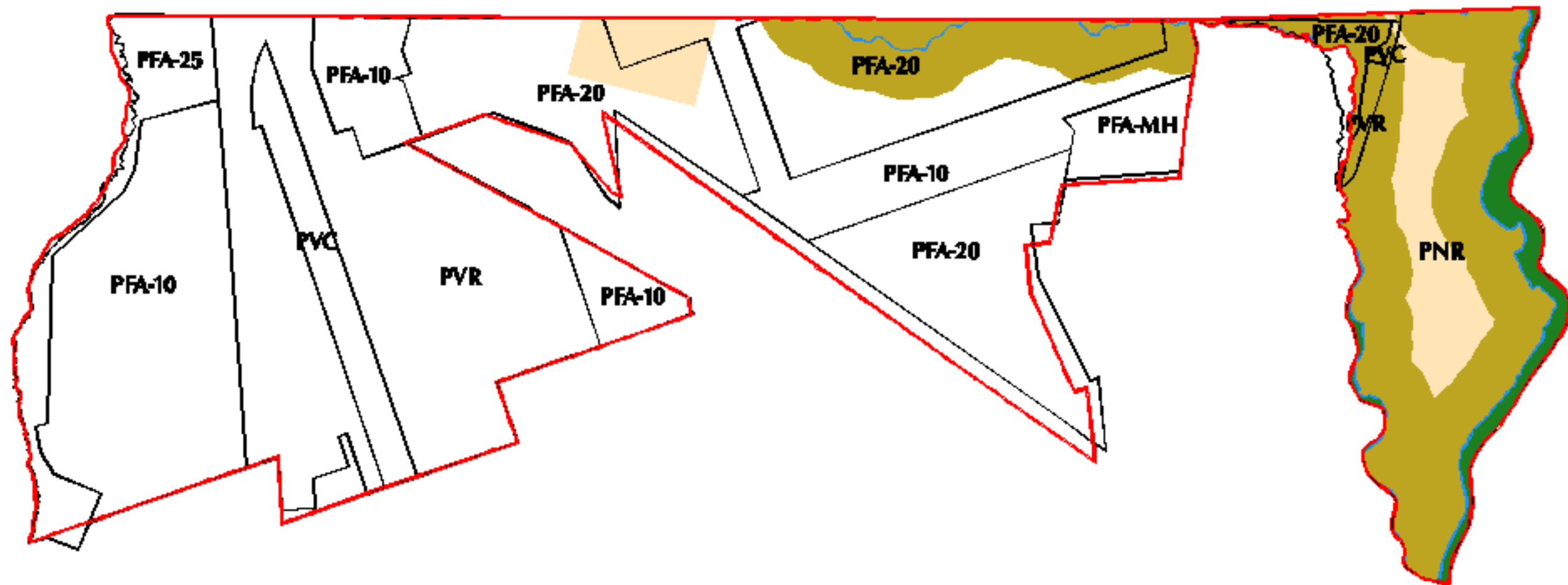


Legend

- Municipal Boundary**
 - Zoning Lines**
 - Scenic & Recreational Designated Boundary**
 - Water Bodies**
- Note: Federal and Local Airport Boundaries are not on this map.

Zoning Key

- F25** LOW DENSITY FOREST
- F3** MODERATE DENSITY FOREST
- M** MINING DISTRICT
- PV** PINELAND VILLAGE
- RD** RURAL DEVELOPMENT
- NC** NEIGHBORHOOD COMMERCIAL



Great Egg Harbor National Scenic & Recreational River System Zoning and Management Boundaries



Map Scale 1:7000 or 1" = 1406.7'

*This map was produced by the Atlantic County
Office of Geographic Information Systems
in cooperation with the National Park Service
June 1999*

Weymouth Township
Atlantic County NJ

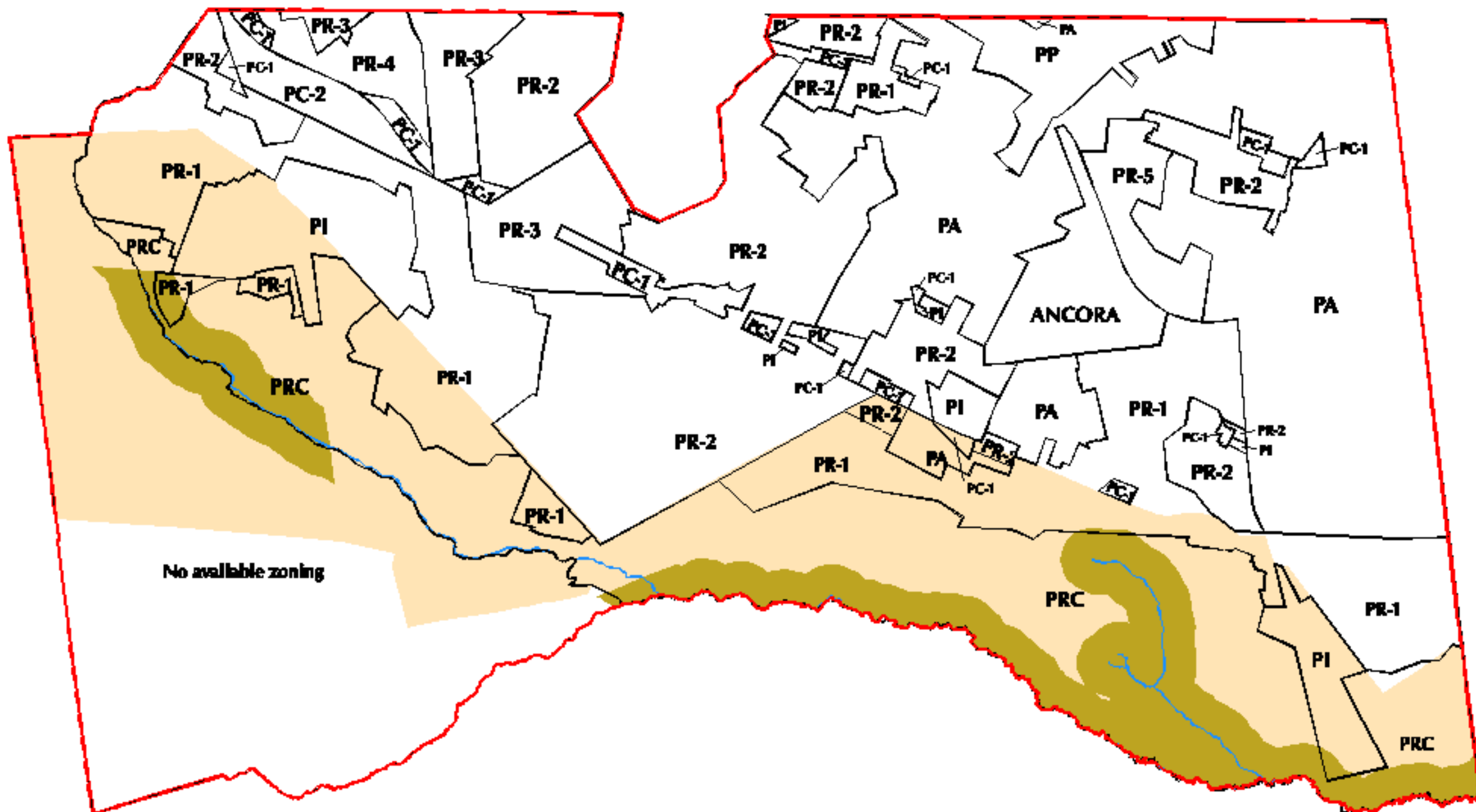


Map Legend

- Zoning Lines
- Municipal Boundary
- Local Management Boundary
- Federal Scenic & Recreational Designated Boundary
- Water Bodies

Zoning Key

PINELANDS FOREST AREA	
PFA-10	10 ACRES
PFA-20	20 ACRES
PFA-25	25 ACRES
PFA-MH	MOBILE HOME PARK
OTHER	
PNR	RURAL RESIDENTIAL
PVC	COMMERCIAL
PVR	VILLAGE RESIDENTIAL



No available zoning

Great Egg Harbor National Scenic & Recreational River System

Zoning and Management Boundaries

Winslow Township
Camden County, NJ

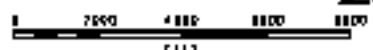


Zoning Key

PA	AGRICULTURAL
PC-1	MINOR COMMERCIAL
PC-2	MAJOR COMMERCIAL
PI	INDUSTRIAL
PP	PRESERVATION
PR-1	RURAL RESIDENTIAL
PR-2	LOW DENSITY
PR-3	MEDIUM DENSITY
PR-4	HIGH DENSITY
PR-5	
PRC	RECREATIONAL AND CONSERVATION

Map Legend

- Zoning Lines
- Municipal Boundary
- Local Management Boundary
- Federal Scenic & Recreational Designated Boundary
- Water Bodies



Map Scale 1:22,500 or 1" = 1958.3'

This map was produced by the Atlantic County Office of Geographic Information Systems in cooperation with the National Park Service June 1999