



What's Happening in and around the River and the Watershed

On **April 22nd**, even though the sky was heavy with clouds that promised a deluge at any moment, Fred Akers lead a small, undaunted group on a hike to the Blue Hole. Though members of the group were surprised that the Blue Hole was not very blue, a lively discussion ensued over the origins of the Blue Hole and the legends that surround it. The Great Egg Harbor River is just a short distance from the hole. The rains held off until after the hike.

Fred Akers and Lynn Maun staffed a table on **April 23rd** at the ACUA's Earthday 2006. Using the Ground Water Model, Fred demonstrated how ground water travels and he discussed different impacts to ground water. Lynn demonstrated runoff using the EnviroScape Model and discussed the various pollutants that travel in runoff to streams, rivers, lakes, bays and oceans. At the end of the day, after many presentations, they were both very tired of talking, but felt the day was a great success.

If you or your group (scouts, schools, civic, church, municipal, etc) would like to see a demonstration using either one or both of these models, please contact Lynn Maun.

The Patcong Creek Cleanup was held on **May 5th**. Many bags of trash, tires and an assortment of miscellaneous items were collected by the 300 volunteers who participated in the day. Fred Akers was surprised to discover a fish ladder under the Bargaintown Bridge during the cleanup. Thanks to all who helped clean up the creek.

Hamilton Township Environmental Commission hosted an ANJEC road show on **May 10th**. Six other municipal environmental commissions attended. The approximately fifty participants found the programs on "Site Plan Review" and "Atlantic County GIS" helpful and educational. Refreshments were plentiful.

Once again, on **May 23rd**, the Egg Harbor Twp. Schools hosted the Miry Run Jamboree. There were many displays and activities setup around Miry Run. Both school children and adults were invited to discover the unique qualities of this small part of the Great Egg Harbor Watershed.

Also on **May 23rd**, the fish ladder was dedicated at Lake Lenape. Representatives from the National Park Service, municipal and federal government agencies, GEHWA, and the media were present. Fred has a nice slide show available documenting the construction of the ladder.

On **May 24th and 26th** the Dawes School fifth and sixth grade students and their teachers, along with GEHWA and GEHRC, planted 160 bushes on the bluffs at Kennedy Park in Somers Point. It was great working side by side with such energetic youth. Local politicians and members of the media were also present and expressed an interest in the project. The school plans to make the "Save the Bluffs" campaign a yearly project. The school had received a grant from Hewlett Packard (HP) to work on the project. Teachers from the school went to a conference sponsored by HP in San Diego to present their project,

along with other schools from around the nation. Out of 2000 participating schools, they were one of the fifteen chosen to receive a new HP Leadership Grant for 2006-2007. Congratulations to Dawes School.

Fred Akers and Lynn Maun were back at Kennedy Park on **June 4th** for “Day at the Bay”. They had a display of pictures showing the students planting bushes on the bluff. They provided demonstrations using the ground water model and had a hands on model using PVC pipe and ping pong balls to demonstrate runoff.

During the month of **July**, Fred and Lynn participated with Julie’s Governor’s School class in activities that related to the Great Egg Harbor River. Julie was one of the teachers at Richard Stockton College Governor’s School on the Environment.



Students at the Hamilton Mall
Impervious cover and stormwater basins

What has our President been up to?

Julie Akers teaches at Richard Stockton College Governor’s School on the Environment

Julie Akers, president of the Great Egg Harbor Watershed Association and member of the Great Egg Harbor River Council was also a



Julie and Paul Kenney, NPS
What’s so funny?

teacher at Richard Stockton College’s Governor’s School during the month of July. Julie was able to draw from her broad



You want me to touch bugs!

experiences as an active environmental advocate and her abilities as a teacher, to educate a group of students about the wide-ranging consequences of impervious cover on the environment. She accomplished this through her classroom lessons, a variety of speakers, and many field trips. Julie and her class explored the effect of impervious cover on runoff and stormwater basins, and how this impacts water quality and quantity of surface and groundwater. To reinforce how

stormwater runoff carries pollutants the students spent an afternoon picking up trash near the river below Lake Lenape. A day was spent collecting aquatic macroinvertebrates so the students could learn methods for determining water quality. The students toured the Pine Barrens, picked blueberries (afterwards they made blueberry muffins), seined for aquatic animals at Nacote Creek field station, toured the ACUA’s sewage treatment plant and wind farm, toured a golf course, and visited Cape May Point. Julie worked hard to introduce experiences many of the students had never had before, including camping and kayaking. Julie has a passion for teaching and is an inspiration to those with whom she comes in contact. This was very apparent after observing her in action with her students.



What you can do!

In this and upcoming newsletters, this section will be devoted to an environmental issue(s). If you have an environmental issue that you would like to share, please mail it to: GEHWA, Environmental Issue, PO Box 109, Newtonville, NJ 08346, or Email it to: lynnkmaun@snip.net, (Subject – Environmental Issue).

The Environmental Costs of Air Conditioning

In July of 1902 the first air conditioner was installed in a printing plant in Brooklyn, NY by Willis Carrier. By 2001, 55 percent of the households in the United States had central air conditioning and three-fourths some type of air conditioning system. Between 1980 and 2001 there was a 28 percent increase in the number of homes with central air conditioning. 107 million households used 1,140 billion kWh of electricity in 2001 (50 percent of which was produced by coal); 14 percent of this was for air conditioning. The total electricity used for cooling is approximately one kilowatt-hour for every five that is used. This does not include electricity generated to cool manufacturing processes or military facilities. In addition to the energy needed to provide electricity for our home air conditioners, seven billion gallons, or 5.5 percent of the gasoline used by cars and light trucks, is for vehicle air conditioning.

For those of us who have health problems that are exacerbated by the heat, air conditioning is indispensable. What about the rest of us? Have we become so complacent that our very existence is threatened outside of a climate controlled environment? What has happened to our ability to cope with the heat? Folks in times past (and those currently without the luxury of air conditioning), had a variety of methods for cooling off. Children ran through sprinklers, folks went swimming, meals were generally light, and cold drinks cherished. Folks dampened their skin before bed and used a fan to cool off.

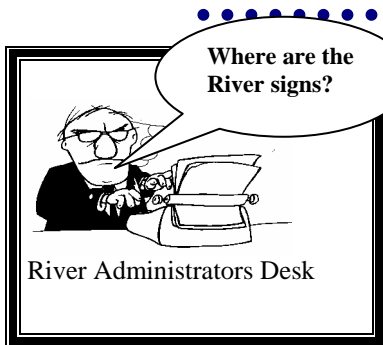
Our connection to the outdoors has been severed by closing our doors and windows, and turning on the air conditioner at the first drop of moisture on our skin. For some of us the only concession we make to a change in temperature is to turn our heating systems off and turn our air conditioners on. In an effort to avoid discomfort we hurry from our air conditioned homes to our air conditioned cars to our air conditioned offices, schools and stores. We no longer hear the birds during the day or the sounds of frogs and insects at night.

If we want to overcome our disconnection from the environment, enjoyment is ours for the taking when we experience what the outdoors has to offer during the warmer months of the year. We can try turning off our air conditioners, opening our windows and sweating. Then listen and observe the variety of life to be found right in our own backyards. We can listen to the hummingbird's wings buzzzzz as they land on the feeder, or lie in bed at night and try to determine which sound is frog and which is insect. For those of us who would really like an adventure, rent a kayak or canoe and explore the **Great Egg Harbor River**. It is truly **Scenic** and **Recreational**.

Anything we can do to reduce our dependence on air conditioning will help reduce our consumption of fossil fuels, and our contribution to rising carbon dioxide levels which increase global warming. If we do nothing, as global warming increases temperatures, so will our dependence on air conditioning.

- Try not to turn on your air conditioner until temperatures reach the high 80's/90's.
- Set your thermostat at 78° F or higher. Each degree setting below 78° F will increase your energy consumption by approximately 8%.
- Use bath and kitchen fans sparingly when the air conditioner is operating.

- Inspect and clean both the indoor and outdoor coils. The indoor coil in your air conditioner acts as a magnet for dust because it is constantly wetted during the cooling season. Dirt build-up on the indoor coil is the single most common cause of poor efficiency. The outdoor coil must also be checked periodically for dirt build-up and cleaned if necessary.
- Check the refrigerant charge. The circulating fluid in your air conditioner is a special refrigerant gas that is put in when the system is installed. If the system is overcharged or undercharged with refrigerant, it will not work properly. You may need a service contractor to check the fluid and adjust it appropriately.
- Reduce the cooling load by using cost-effective conservation measures. For example, effectively shade east and west windows. When possible, delay heat-generating activities, such as dishwashing, until the evening on hot days.
- Over most of the cooling season, keep the house closed tight during the day. Don't let in unwanted heat and humidity. If practical, ventilate at night either naturally or with fans.
- Try not to use a humidifier at the same time your air conditioner is operating. The dehumidifier will increase the cooling load and force the air conditioner to work harder.



The Great Egg Harbor National Scenic and Recreational River Council, which was formed in 2000, obligated \$6,000 for “Watershed Awareness Signage” back in 2001. Their goal was to place signs in the watershed where the Wild & Scenic Great Egg Harbor River and its Tributaries flowed under roads in all 12 River Council Municipalities. The idea is to connect people with the river as they are driving around the watershed.

The River Council did an excellent job of designing the NJDOT compliant signs, but no one knew how long the planning and approval process to get 18 pairs of these signs in the ground would actually take. Well, 5 years later, 10 pairs are in the ground on local and county roads, and 8 pairs should be in the ground on state roads by the end of 2006. If you want to see what they look like, check out the picture and the table below that lists all the locations by municipality, road agency, and stream name.

Municipality	Road Crossings	Stream Name
Folsom	8 th Street	Great Egg Harbor River
Buena Vista	Main Ave.	South River
Buena Vista	Pancoast Mill Rd.	Deep Run
Weymouth	County Rte. 669 (11 th)	South River
Weymouth/Hamilton	County Rte. 668 (F.W.)	South River
Hamilton/EHT	County Rte. 559	Miry Run
EHT/Somers Point	County Rte. 559	Patcong Creek
Winslow	County Rte. 536	Great Egg Harbor River
Winslow/Monroe	County Rte. 723	Great Egg Harbor River
Winslow/Monroe	Piney Hollow Road	Great Egg Harbor River
Upper/Estelle	NJ Route 49	Tuckahoe River
Upper	NJ Route 50	Cedar Swamp Creek
Upper/Corbin City	NJ Route 50	Tuckahoe River
Estell Manor	NJ Route 50	Stephen Creek
Estell/Weymouth	NJ Route 50	South River
Hamilton	NJ Route 50	Great Egg Harbor River
Folsom	NJ Route 54	Great Egg Harbor River
Hammonton	NJ Route 54	Penny Pot Branch



More River Council News

In mid-June, Administrator Fred Akers and Winslow River Councilor Bud Payntor were invited to a special presentation by Winslow Mayor Sue Ann Metzner regarding a proposed ground water diversion by Camden County. In order to support a large amount of additional development in Winslow that would require a total water use of 3 million gallons per day, Winslow and Camden County need to find an additional 1 million gallons of water supply and an additional 1 million gallons of sewer treatment. Today's allocation of about 2 million gallons per day is both taken from, and returned to, the Kirkwood Cohansey aquifer within the Great Egg Harbor Watershed.

The new proposal would take 2 million gallons per day from the existing wells in the Kirkwood Cohansey aquifer, add 1 million gallons per day from the Delaware River, and then pump all 3 million gallons per day of waste water to Camden and the Delaware River. This would result in a 2 million gallon per day withdrawal from the aquifers beneath the Great Egg Harbor Watershed that would never be returned. Pumping water out of one watershed and shipping it to another is called a depletive use.



****Member Meetings**** **Focusing on** **“What’s in Our Backyard”**

Unexpected Wildlife Refuge and The Beaver Defenders



One of the two lakes on Unexpected Wildlife Refuge

On May 23, Sarah Summerville, director of the Unexpected Wildlife Refuge (located on Unexpected Road, in Buena Vista Twp.), presented a program on the history of the refuge, how it got started, who started it, and its purpose. The refuge is truly a sanctuary for all wildlife found within its borders. Hunting is prohibited. Sarah has continued the vision of the founders Cavit and Hope Buyukmihci. The initial 85 acres has grown into 737 acres, and many of these acres are the result of Sarah's hard work. Sarah, “A Beaver Defender”, carries on Hope's work of educating

about and protecting beavers. If you are interested in learning more about the refuge go to:
<http://www.unexpectedwildliferefuge.org>.

Campfire at Weymouth Furnace Park

Thank you to all the members who attended the first “Annual Campfire”, on July 25, at Atlantic County's Weymouth Furnace Park. With lawn chairs in hand, members gathered around a blazing campfire, located on the banks of the Great Egg Harbor River. As woodland critters performed their nightly rituals, members listened to a pleasant tale of four men who embarked on a canoe trip down the Great Egg Harbor River in 1907. The visually descriptive tale, by the author Henry Van Dyke, helped listeners embark on the same journey as we visited places whose names, for most, are a mention in history.





As the story unfolded, members roasted marshmallows for smores, and occasionally swatted one of New Jersey’s high profile species, the mosquito. Following the story, members exchanged memories of the river’s history as well as concern for the river’s future. Finally, when the fire was a glowing pile of embers, members bid farewell as they journeyed home. The story, “Between the Lupin and the Laurel”, can be found at: <http://www.kellscraft.com/daysoffch6.html>.

****Questions for Members****



The meeting at Weymouth Furnace was a departure from our regular meetings which are held at the Warren E. Fox Nature Center in Estell Manor. There are 6 meeting held throughout the year on the 4th Tuesday of January, March, May, July, September and November (the odd numbered months) at 7:00 pm. Although we usually have a speaker these meetings are generally not well attended. As a member with a concern for the preservation of the Great Egg Harbor River, we are asking you to take the time to respond to the following questions.

As a Member Would You:

1. Participate in a meeting that takes place outdoors?
2. Be interested in planned activities on or near the river?
3. Share interests you have in the river?
4. Attend meetings during the colder months with a speaker at the nature center?
(What topics would interest you?)
5. Like meetings to take place outside during the warmer months?
(What activities would interest you?)
6. Share any ideas you may have that are not asked in the above questions.

We would ask that you please respond to these questions. Our hope is to renew the interest and participation of our members in the activities of GEHWA. You can either send a **written reply** to: GEHWA, Membership Questions, PO Box 109, Newtonville, NJ 08346, or an **Email** to: lynnkmaun@snip.net, (Subject – Membership Questions).



BELINDA IRIZARRY MEMORIAL FUND

Update: The Belinda Memorial Fund currently has \$5,550. Plans are underway to present the first scholarship of \$500.00 to either a student or an organization in November. Notification will be sent to the donors when plans for the presentation are finalized.

Elmer Gregory Memorial Fund: To date, \$2108.00 has been received in memory of Elmer Gregory, father of Greg Gregory, Chairperson of the River Council. These funds have been dedicated towards the preservation of the bluffs at Kennedy Park in Somers Point. This preservation project, “Save the Bluffs”, has been promoted by the Dawes Avenue School with GEHWA adding additional support. In May 200 bushes and supplies were purchased for \$1900.00. 160 of those bushes were planted on the bluffs to help prevent erosion and combat invasive species.



Calendar of Events

Wednesday August 16, 2006
Great Egg Harbor NS & R River Council Meeting

Tuesday, November 26, 2006
GEHWA Members Meeting

Tuesday, September 26, 2006
GEHWA Members Meeting

Wednesday December 20, 2006
Great Egg Harbor NS & R River Council Meeting

Wednesday October 18, 2006
Great Egg Harbor NS & R River Council Meeting



Telephone Numbers to Remember

Great Egg Harbor Watershed Association

Julie Akers, President (856) 697-6114
 Fred Akers, Administrator (856) 697-6114
 P. O. Box 109; Newtonville, NJ 08346
 Email: akers@gowebway.com
 Web Site: www.gehwa.org
 Lynn Maun, Coordinator (856) 453-0416
 Email: lynnkmaun@snip.net

National Park Service

Paul Kenney (215) 597-5823
 Paul_Kenney@nps.gov

NJDEP Watershed Management Office

Robert Mancini (609) 777-0580

Atlantic County Department of Planning

Bob Lindaw (609) 645-5898

US Army Corps of Engineers (215) 656-6725

NJDEP Regulatory Office for Atlantic County

(609) 292-8262

NJDEP Enforcement Officer

Kevin Brown (732) 255-0787

Pinelands Commission

Main Number (609) 894-7300

NJDEP Hotline: 1-877 WARN DEP



Membership Information

Your membership supports our mission and ensures our survival as a non-profit advocate, as we work to protect and preserve the Great Egg Harbor River and Watershed throughout the year. As a result of federal budget cuts your support is needed now more than ever. Without you, we could not exist. Thank you for your support!

Name/Organization: _____
 Street Address: _____
 City, State, and Zip: _____
 Phone Number: _____
 Email address: _____

Yes, I would like to receive notices by Email.

Annual Membership: Individual: \$10; Family: \$15; Supporting: \$35; Patron: \$50; Corporate: \$100

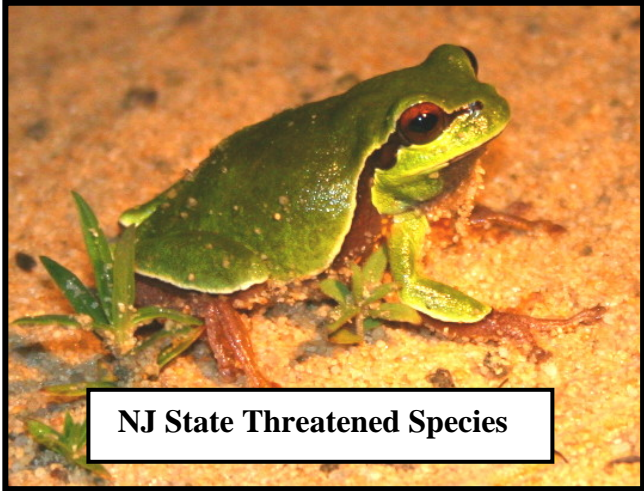
Please mail this form along with your check to:

Great Egg Harbor Watershed Association, Membership, P.O. Box 109, Newtonville, NJ 08346



Saraha Sands – Future ATV Park?

**Pine Barrens Tree Frog
found at Saraha Sands**



NJ State Threatened Species

Great Egg Harbor Watershed Association
P.O. Box 109
Newtonville, NJ 08346