



River Currents

November 2006

www.gehwa.org

Issue 40

What's Happening in and around the River and the Watershed

The Friends of the Park sponsored the inaugural Pinelands Folk Arts Festival on **August 5th** at Atlantic County Park in Estell Manor. Many of you may recall a similar event that was held at the park in the past. The original Folk Festivals were held between 1984 and 1991. There was strong public support of this event. A full day of entertainment and a varied group of crafters, and exhibitors all added to a very successful day. GEHWA participated as one of the exhibitors in the event. The high turnout was an added bonus for us. We had many folks stopping by our exhibit for information and to talk. Watershed Fred has a real knack for drawing folks in. First he would make eye contact and then he would throw out this lure, "Do you know where your water comes from"? Many folks were brought to a standstill by this question and they watched patiently while he demonstrated where drinking water comes from using the Groundwater Model. The Second Annual "Pinelands Folk Arts Festival" will be held on Saturday, August 4th, 2007 (*Put this date on your calendar; it is an event well worth attending*).

Scout Troops #79 and #55 met on Saturday **September 9th and 16th** respectively at Mosquito Landing in



Tuckahoe to cleanup the river. The two troops committed to the cleanup as a means of raising funds for their troops.



Each troop received \$2,000. The Great Egg Harbor River Council sponsored this events. The cleanup started from route 49 at Head of the River and continued down to the mouth of the bay at Beasley's Point. Approximately 50 members were present on both dates. It was a beautiful sunny day on the 9th. Flocks of Red-winged Blackbirds were observed feasting on Wild Rice. On the 16th the skies were somewhat overcast. Canoeing downstream proved to be challenging when both the wind and the current were against us. Canoes, kayaks and power boats were launched on both days. On the 9th the flotilla



traveled from Riverview Campground downstream to Mosquito Landing, and on the 16th from Mosquito

Landing downstream to Beasley's Point. Bottles, foam, plastic and a large piece of a floating dock were some of the items removed from the river. The cleanup was a success and the scouts can take pride in their contribution towards protecting the river. Prior to the scheduled cleanups, Fred met with each troop to present a power point program, "What is a Watershed". The program was received well by both troops. Each troop had strong adult

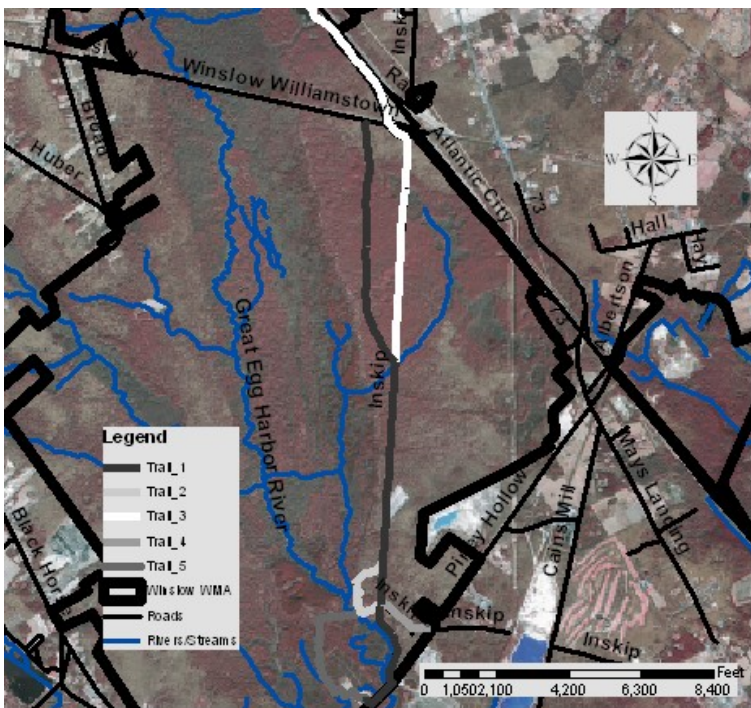


support, both at the meetings and during the cleanup. Great job Troops #79 and #55.

New Trails for Winslow Wildlife Management Area

The New Jersey Department of Transportation (NJDOT), in partnership with the New Jersey Department of Environmental Protection (NJDEP) Trails Program, is planning to update their New Jersey Trails Plan of 1996. Lynn and Dick Colby attend the open house at the Canale Training

Center in Egg Harbor Twp. on **September 12th** and Fred attended the open house at the Ellarslie Museum in Trenton on **September 26**. It was an opportunity to find out what is planned and to give input for the data collected during this information gathering time. After reviewing information regarding officially listed trails, it was discovered that the Great Egg Harbor River (GEHR) is a trail in the New Jersey Trails Program. The handout NJ Trails provides information on the GEHR trail. In an effort to contribute towards the planning of future trails, Fred and Lynn have been working on identifying trails within the Winslow Wildlife Management (Blue Hole) area that could be included within the New Jersey Trails Project. On **October 15th** they hiked and drove around the WMA identifying potential trails. GPS coordinates were taken and these coordinates were later mapped using Geographic Information Systems.



The Discovery Festival was held at Whitesbog Village on **October 1**. Fred and Lynn intended to table at this event, but discovered after arriving that the event was cancelled (All because of a few showers and the threat of thunder storms. Who would have thought?). Neither Fred nor Lynn thought to check with the Pinelands Preservation Alliance (PPA) to find out if the event was still on. The trip was not without merit though, for after speaking with folks from the PPA, we toured Whitesbog Village and the surrounding cranberry bogs. While out on the bogs, a local farmer happened upon us and we were treated to an interesting history of the bogs, including aerial photos and details about current operations. Though this

event did not take place within the watershed, it did take place in the pinelands, and since GEHW drains 304 square miles of the Pinelands National Reserve we felt it was important to support this event.



and mulched. On **November 14th**, after rescheduling several times due to rain, the 6th grade finally got their day on the Bluffs. They replaced the remaining dead bushes and moved a mountain of mulch (approximately 12 cubic yards of the 15 cubic yards that was delivered). When the kids started to slow down after lunch, and there were still a few cubic yards of mulch left to move, one of the teachers, with great motivational abilities, inspired the kids to get the job down.

The River Council and GEHWA continue support of the Dawes Avenue School “Save the Bluffs” project. GEHRC recently received a \$1,500.00 donation from the Bayfest Committee for the Bluffs project. On **October 6th** Fred and Lynn took a survey of the bushes that were planted in the spring. Approximately 60 of the bushes had died and needed to be replaced. After a lively meeting with the Dawes teachers involved in the project, it was decided that the 4th, 5th and 6th grade classes would replace the dead bushes and place mulch around all the bushes. On **November 7**, the 4th and 5th grades picked up trash, replaced dead bushes, cut down Japanese Knotweed



Many thanks to the 4th, 5th and 6th graders and their teachers for a job well done (these youth are great to work with and their enthusiasm for this project is inspiring).

Special Note: The 15 cubic yards of mulch spread on the bluffs by the students from the Dawes school for their Save-the Bluffs project was donated by the ACUA. *Thank you ACUA for your generous contribution.*

For those folks who place their leaves and other yard debris at the curb, it may have been somewhat complicated this year. New state Department of Environmental Protection regulations, which went into effect in the spring 2005, states that leaves must not be placed curbside any sooner than seven days before the next scheduled pickup and no closer than 10 feet to the nearest storm drain.

The reason for this is: Leaves that are too close to storm drains, or left out for too long, can clog storm drains, coat the bottoms of nearby streams and kill small aquatic organisms, and be a public safety hazard.

Folsom’s Environmental Commission has joined ACUA’s Adopt-a-Highway program. On **November 5th**, armed with trashbags, gloves and very cool trash grabbers, they attacked the roadside trash on Mays Landing

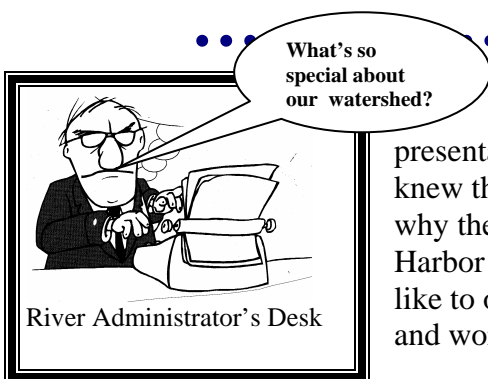
Road. This is what was collected: 5 bags of trash, 5 bags of recycling, a green plastic lawnchair, a 5-gallon pail w/lid - contents unknown, an inner tube, a mower blade and 3 hub caps - not bad for two hours work! The following are excerpts from an article pertaining to Egg Harbor Township that was published in the Atlantic City Press on **November 22**, 2006, by Martin DeAngelis. A new ordinance will help the township handle development better by requiring environmental assessments of more proposed projects. It is a new law that the Township Committee approved unanimously. The change in the planning standards will make developers file environmental-impact statements with more applications, including even minor site plans involving any properties that contain wetlands or that are within 200 feet of wetlands.



The Staff of GEHWA Work to Stay Informed

On **September 7th** Fred and Lynn attended a meeting at Stony Brook/Millstone on New Jersey's Environmental Agenda. Debbie Mans, environmental advisor to Governor Corzine, and representatives who filled in for Lisa Jackson, Commissioner of NJDEP (who was scheduled to present) presented information on Governor Corzine's initiatives for growth, water, wildlife and open space. Knute Jensen, NJDEP Bureau of Enforcement and Compliance demonstrated how to use the Data Miner's database, and he also discussed enforcement issues.

In an effort to continually improve the GIS capabilities of GEHWA, Fred and Lynn have attended various training events. On **September 15th** representatives from ANJEC and NJDEP Endangered and Nongame Species presented the program, "Planning to Protect Habitat". This was a computer training event using New Jersey's Landscape Project. It identifies critical habitat of endangered species, wetlands, etc. Lynn received a grant from ESRI for GIS software and training in June. On **September 27-29** she attended the training at ESRI's Chesterbrook Training Center in Philadelphia. ESRI rolled out their new ArcGIS 9.2 product in Trenton on **October 19th**. Fred and Lynn learned what is new and what has been simplified. They look forward to upgrading their computer systems with ArcGIS 9.2 this fall. On **October 20th** they attended a user support group for non-profits at Stony Brook/Millstone in Pennington. This was an organizational meeting to find out the needs of the group and how those needs can be met.



As the guest speaker at a recent Kiwanis Club meeting, I started my presentation with the usual question, "what is a watershed"? The Kiwanis folks knew the answer right off, and then I proceeded to tell them a couple of reasons why the Great Egg Harbor Watershed is special. So why is the Great Egg Harbor Watershed special? As we count our blessings for the holidays, I would like to outline why the Great Egg Harbor Watershed is a special place to live and work:

- The Great Egg Harbor Watershed sustains us: we eat its fish, grow crops with its water, and spend lifetimes playing in and along it.
- The Great Egg Harbor River and its tributaries throughout the watershed are interconnected with our drinking water.
- The Great Egg Harbor River and its tributaries are part of our heritage and run deep in our consciousness, providing us with a strong sense of place.
- The watershed has the capacity to absorb a large amount of water, minimizing downstream flooding during storms and providing natural flood control.

- The water of the watershed is the life blood of our natural environment and serves as the foundation for a healthy ecosystem.
- The rivers and streams of the watershed are ribbons of irreplaceable habitat for wildlife flowing through virtually every community, and shelter countless wildlife species — fish, birds, amphibians, mussels, snails, and other animals — including many endangered species.
- The Great Egg Harbor Watershed is a living classroom that provides learning opportunities for children and adults alike, weaving together ecology, geology, physics, art, politics, literature, and history.
- The watershed and its associated parks and trails are like magnets that draw people together to: walk, boat, fish, swim, and watch wildlife.
- The watershed speaks to the heart — almost everyone has a favorite river or water body. The mystic quality of rivers and flowing water often appeals to our spirits at a deep level and are a community’s heart and soul.
- The Great Egg Harbor Watershed is a smart investment reducing public costs and increasing private revenues; saving on expensive treatment of drinking water, absorbing floodwaters, contributing to the local economy through commercial and recreational fishing, boating, and tourism, and generating economic benefits by attracting people and companies who increasingly make relocation decisions based on an area’s quality of life.
- The Great Egg Harbor Watershed has 129 miles of federally designated Scenic and Recreational river miles that are recognized and supported by Congress for their Outstanding National Resource Values.
- The Great Egg Harbor Watershed has the Great Egg Harbor Watershed Association with Trustees and staff dedicated to the protection and preservation of all the special values of the Great Egg Harbor Watershed.

On behalf of the Great Egg Harbor Watershed Association, I wish you a safe and fun winter holiday and a safe and prosperous New Year.

Fred Akers, Administrator, Great Egg Harbor Watershed Association



****Member Meetings****
Focusing on
“What’s in Our Backyard”

Clay Sutton speaks on Bird Stewardship

The Great Egg Harbor River is for the birds as well as people. On Tuesday September 26, locally renowned bird expert and writer Clay Sutton provided us with an update of GEHWA’s on going baseline documentation of the status and trends of bird use and populations on the Great Egg and Mullica Rivers. Though the Mullica River is not part of GEHW it was important to include this river located in the watershed adjacent to GEHW in the study. Clay is a Naturalist, a Biologist, a Writer, and a Lecturer who has studied birds in the wild for over 30 years. Folks attending the meetings heard and saw first hand information on the abundant birds in our watershed. During the meeting special recognition was given to Conectiv Energy and the National Park Service for their financial support for this important stewardship project. Fred Akers provided a brief power point presentation using



GIS and the NJ Landscape Project to demonstrate the similarity between the Great Egg and Mullica River habitats. This similarity supports the findings of the 2004-2005 and 2005-2006 bird surveys.

As an affirmation of Clay's bird identification skills, I would share the following: I had the privilege of accompanying Clay while he was conducting a bird survey of the GEHR last winter. It was late in the afternoon on a very cold and windy day in early February. We had been surveying various sites around the GEHR since early morning. While surveying birds in one of the impoundments at the Tuckahoe WMA, Clay observed a Common Teal within a larger group of ducks (~ 100 birds), many of them Green-winged Teals.



These birds were at the far side of the impoundment and were moving around. The only way I could identify the Common Teal was after Clay said to look for a horizontal white bar rather than a vertical white bar. Clay knows his birds!



The following is an article from the Merchant Energy News: *News & information from the Wholesale Energy Business of PHI*, November 2006
Conectiv Energy Again Supports Great Egg Harbor Research

Conectiv Energy recently contributed \$3,000 to the Great Egg Harbor Watershed Association to help the organization continue its valuable environmental research. The Great Egg Harbor River and Bay and the Mullica River and Great Bay have long been known for their abundance of birds. But little has been done until now to scientifically document the number and diversity of this abundance, said Fred Akers, Administrator of the Great Egg Harbor Watershed Association. With this very important financial support from Conectiv Energy for a second year, the association will be able to continue and broaden its bird survey work to discover and provide cornerstone avian resource data to be used for river management



From left: Andrew Shawl, Fred Akers and CE's Chuck May
 Fred Akers, Great Egg Harbor Watershed Association Administrator is presented with a check from Conectiv by Andrew Shaw. It is for the 2006-2007 Great Egg Harbor River/Mullica River Bird Survey. The event took place on the Bluffs at Kennedy Park in Somers Point. The B.L. England Power Plant is in the background.

and protection, Fred said. “We are very pleased to be able to contribute again to this important work in the watershed,” said Andrew Shawl, Environmental Coordinator at the nearby B.L. England Generating Station, which is operated by Conectiv Energy. The 2006-2007 survey season will be the fourth year of a minimum five-year survey program. Conectiv Energy’s support of this effort will help to ensure that the program goals are realized. The Great Egg Harbor Watershed Association thanked Conectiv Energy for the financial support of this stewardship project. Successful public/private partnerships like this are fundamental to the protection of the resources of the Great Egg Harbor and Mullica Rivers, Fred said.

Special Note: The 2005-2006 bird survey for the Great Egg Harbor River and the Mullica River has been completed. This report will be posted on the website: www.gehwa.org.



****Questions for Members****

In an effort to involve our members in the activities of the Great Egg Harbor Watershed Association, we would ask that you would take some time to answer the following questions. Our hope for 2007 is to see greater member participation in GEHWA events. There are 6 meetings held throughout the year on the 4th Tuesday of January, March, May, July, September and November (the odd numbered months) at 7:00 p.m. at the Warren E. Fox Nature Center in Estell Manor.

As a Member Would You:

1. Participate in a meeting that takes place outdoors?
2. Be interested in planned activities on or near the river?
3. Share interests you have in the river?
4. Attend meetings during the colder months with a speaker at the nature center?
(What topics would interest you?)
5. Like meetings to take place outside during the warmer months?
(What activities would interest you?)
6. Share any ideas you may have that are not asked in the above questions.

We would ask that you please respond to these questions. Our hope is to renew the interest and participation of our members in the activities of GEHWA. You can either send a **written reply** to: GEHWA, Membership Questions, PO Box 109, Newtonville, NJ 08346, or an **Email** to: lynnkmaun@comcast.net, (Subject – Membership Questions).



BELINDA IRIZARRY MEMORIAL FUND

Update: Current donations for the memorial fund total \$6,350.00. Recently a CD was purchased for \$6,000.00 with the balance of the funds going into a money market fund. Interest from these funds will be used to support an annual scholarship. A special committee is being formed that will select the recipient of this annual award.

The following is a letter that was sent to GEHWA along with a donation to the memorial fund from Andrew Anderson. We did not have his letter at the time we published the April 2006 newsletter where many folks expressed their memories of Belinda. Although a year has come and gone since Belinda’s passing, memory of her lives on in those that she touched.

I worked closely with Belinda while serving as the 2003-2004 AmeriCorps New Jersey Watershed

Ambassador assigned to the Great Egg Harbor Watershed. Belinda and I completed dozens of community outreach programs together, including numerous puppet shows and EnviroScape presentations in the Williamstown and Egg Harbor Township school districts. Belinda had the most genuine love of nature and her animals of anyone I have ever met. In the spring of 2004, we worked with students from a Township of Hamilton school marking storm drains in a nearby development. Her enthusiasm of and concern for the environment was contagious.

I was fortunate enough to maintain contact with Belinda after my term with the AmeriCorps was complete. We saw each other again at the 2004 Pinelands month kickoff at Whitesbog Village and at the Batsto Country Living Fair. I read with horror the email she had sent me discussing her cancer. When her e-mails stopped and I did not see her at last year's Country Living Fair I feared the worst.

Reading of her passing brought me to tears. Belinda Irizarry epitomized the definition of the words heart, sole, caring and love. I will take her spirit with me wherever I go and trust me when I say I'm a better man for having done my service in her company.

Sincerely,



Andrew J. Anderson

ELMER GREGORY MEMORIAL FUND:

Update: Total donations to the fund equaled \$3,638.13. Current balance equals \$1399.65 after expenses for the Bluffs project. All funds received for Elmer Gregory, who was the father of Greg Gregory, Chairperson of the River Council, have been obligated to the River Council and Somers Point for the "Save the Bluff project".



Calendar of Events

Wednesday December 20, 2006
Great Egg Harbor NS & R River Council Meeting

Tuesday January 23, 2007
GEHWA Members Meeting

Wednesday February 21, 2007
Great Egg Harbor NS & R River Council Meeting

Tuesday March 27, 2007
GEHWA Members Meeting

Wednesday April 18, 2007
Great Egg Harbor NS & R River Council Meeting

Tuesday May 22, 2007
GEHWA Members Meeting

Wednesday June 20, 2007
Great Egg Harbor NS & R River Council Meeting

Tuesday July 24, 2007
GEHWA Members Meeting

Wednesday August 15, 2007
Great Egg Harbor NS & R River Council Meeting

Tuesday September 25, 2007
GEHWA Members Meeting

Wednesday October 17, 2007
Great Egg Harbor NS & R River Council Meeting

Tuesday November 27, 2007
GEHWA Members Meeting

Wednesday December , 2007
Great Egg Harbor NS & R River Council Meeting



Telephone Numbers to Remember

Great Egg Harbor Watershed Association

Julie Akers, President (856) 697-6114
Fred Akers, Administrator (856) 697-6114
P. O. Box 109; Newtonville, NJ 08346
Email: akers@gowebway.com
Web Site: www.gehwa.org
Lynn Maun, Coordinator (856) 453-0416
Email: lynnkmaun@comcast.net

National Park Service

Paul Kenney (215) 597-5823
Paul_Kenney@nps.gov

NJDEP Watershed Management Office

Robert Mancini (609) 777-0580

Atlantic County Department of Planning

Bob Lindaw (609) 645-5898

US Army Corps of Engineers (215) 656-6725

NJDEP Regulatory Office for Atlantic County
(609) 292-8262

NJDEP Enforcement Officer

Kevin Brown (732) 255-0787

Pinelands Commission

Main Number (609) 894-7300

NJDEP Hotline: 1-877 WARN DEP



Membership Information

Your membership supports our mission and ensures our survival as a non-profit advocate, as we work to protect and preserve the Great Egg Harbor River and Watershed throughout the year. As a result of federal budget cuts your support is needed now more than ever. Without you, we could not exist. Thank you for your support!

Name/Organization: _____

Street Address: _____

City, State, and Zip: _____

Phone Number: _____

Email address: _____

Yes, I would like to receive notices by Email.

Annual Membership: Individual: \$10; Family: \$15; Supporting: \$35; Patron: \$50; Corporate: \$100

Please mail this form along with your check to:

Great Egg Harbor Watershed Association, Membership, P.O. Box 109, Newtonville, NJ 08346

Please note: In order for your donation to be tax deductible for 2006 it must be sent by the end of the year.

Thank You



**Cooper's Hawk -Winslow
Wildlife Management Area**

**Remains of Bridge over
Great Egg Harbor River –
Winslow WMA**



Great Egg Harbor Watershed Association
P.O. Box 109
Newtonville, NJ 08346