



River Currents

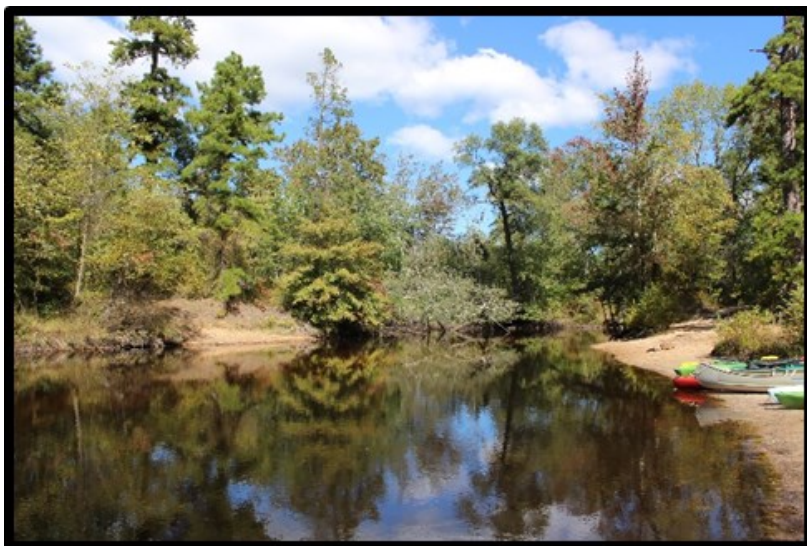


Fall 2013

www.gehwa.org

Issue 63

GEHWA's Fall Adventure By Lynn Maun



Blue skies and pleasant temperatures greeted a group of enthusiastic paddlers as they gathered on the shore of the Great Egg Harbor River at Camp Acagisca, one of New Jersey's four National Wild and Scenic Rivers, on Saturday, September 28, 2013. It was the first day of a two day adventure, sponsored by the Great Egg Harbor Watershed Association (GEHWA), of canoeing and kayaking that also included overnight camping at Camp Acagisca, which is part of the Atlantic County Parks System.



On Saturday as the paddlers traveled downriver from Camp Acagisca to Lake Lenape, they were treated to a peek at the early fall colors that were starting to appear in the vegetation lining the banks of the river. Due to a recent lack of rain, both the water level and velocity of the river were reduced. But even so, care was still needed to navigate the twists and turns on this stretch of the river. At times, when

the breeze was not stirring the surface of the tea-colored river, fish could be seen darting through the water. As we approached the upper reaches of Lake Lenape head winds required some strenuous paddling. Once the winds died down paddling became easier. Then a tailwind helped propel the boats as they neared the lower end of the lake and the end of the day's journey. It was a wonderful daycontinued on page 2



...continued from page 1 paddling with a group of friends while enjoying the peace and beauty experienced when traveling on the river.

After loading the boats back onto the tops of their vehicles, the tired group of paddlers traveled back to Camp Acagisca. Once back at camp the group of tired and hungry paddlers gathered in the lodge to enjoy a hot meal and lively discussion.

Sunday morning the group gathered on the bank of the river at Weymouth Furnace, another Atlantic County Park.



The group paddled from Weymouth Furnace, which is up river from Camp Acagisca, back to the camp. Navigating the area between Weymouth Furnace and Camp Acagisca was more challenging than the stretch of river between Camp Acagisca and Lake Lenape, even with low-water conditions. Tighter turns and submerged obstacles resulted in a couple of dunks in the river. High spirits and good humor prevailed, especially at the sight of many basking turtles and a large water snake carrying (or eating?) a smaller snake in its mouth. The day on the river ended shortly before noon. After loading the boats and packing up



tents and gear, the happy group of paddlers said their goodbyes with plans on meeting again next year for this annual fall event sponsored by GEHWA.

The Great Egg Harbor Watershed Association's Environmental Programs are FREE



4th & 5th Grade Students from Dawes Avenue School, Somers Point

We offer our environmentally focused programs **free** of charge to augment existing school curriculum. A school's environmental programs are often threatened when faced with annual budget cuts. If you are a parent, and/or an educator, and feel our programs would enhance the environmental education that your child/student is receiving, please



5th Grade Students at St. Vincent DePaul, Mays Landing

contact the appropriate individual in your school and request that they take advantage of the Great Egg Harbor Watershed Association's **free** programs. If you would like additional information please contact Lynn Maun, Education Outreach Coordinator at 856-453-0416 or lynnkmaun@comcast.net.

REMEMBER our environmentally focused programs are FREE!

Calendar of GEHWA and GEHRC Meetings

2014

Please make a note of the different meeting times: January, February, March, October, November and December the meetings will begin at 6:30 pm and end at 8:00 pm.

All other meetings will begin at 7:00 pm and end at 9:00 pm.

Tuesday, January 28, 2014 - GEHWA Member Meeting— Fred Akers presents “The Great Egg Harbor Wild and Scenic River Designation”

Wednesday, February 19, 2014 - Great Egg Harbor NS & R River Council Meeting—Annual Reorganization Meeting

Tuesday, March 25, 2014 - GEHWA ANNUAL Member Meeting & Program

Wednesday, April 16, 2014 - Great Egg Harbor NS & R River Council Meeting



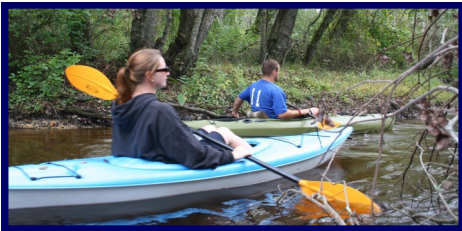
Tuesday, May 27, 2014 - GEHWA Member Meeting—Annual Frog Walk
(Details will be provided closer to the event)

Wednesday, June 18, 2014 - Great Egg Harbor NS & R River Council Meeting



Tuesday, July 22, 2014 - GEHWA Member & Friends Picnic and Campfire (Location and details will be provided closer to the event)

Wednesday, August 20, 2014 - Great Egg Harbor NS & R River Council Meeting



Saturday and Sunday, September 27-28, 2014
GEHWA 2 day Canoe/Kayak event on the Great Egg Harbor River and overnight camping at Camp Acagisca
(Details will be provided closer to the event)

Wednesday, October 15, 2014 - Great Egg Harbor NS & R River Council Meeting

Tuesday, November 25, 2014 - GEHWA Member Meeting— Program to be announced.

Wednesday, December 17, 2014 - Great Egg Harbor NS & R River Council & Great Egg Harbor Watershed Association Trustee Annual Meeting

Please plan on attending these events.



From the River
Administrator's Desk

**Join Us on Tuesday January 28, 2014
at 6:30 PM for a Presentation by
River Administrator Fred Akers
as We Discover How the
Great Egg Harbor River Became
“America’s 1st Locally Managed
Wild and Scenic River”**

On January 28th, River Administrator Fred Akers will tell the story of how the Great Egg Harbor River came to be federally designated as America's first locally managed Wild and Scenic River. Based on local public demand to protect the river, Congress commissioned the National Park Service to study the Great Egg Harbor River in 1986. A task force was created to study and qualify the river for designation. As a result of the study, 129 miles including 17 tributaries of the river were federally designated in 1992. In 1989 the Great Egg Harbor Watershed Association was formed and it became the host organization which implements the Comprehensive Management Plan that is designed to protect the river forever. Please plan on attending and hear Fred tell this amazing story of local river stewardship.



**Please note the new meeting time is at 6:30 PM at the
Warren Fox Nature Center in Estell Manor Park,
Mays Landing**

In the event of inclement weather please call 856-697-6114

Exploring the World of Honeybees

Part 3 in a 4 Part Series

By Lynn Maun

The Summer months for both Julie and the Maun's, as new beekeepers, were both interesting and challenging.

Julie's hive did well throughout the Summer. The bees drew (built) out the comb on the frames in the bottom super and then filled the comb with honey, pollen and brood (eggs, larvae and pupae). Her new queen did a good job laying eggs. Her bees never swarmed. When Julie's bees had



Nicely drawn out frame with bees and honey

drawn out most of the frames in the bottom super, she added another super to the hive. She continued to provide food for her bees, even though they were foraging for nectar and pollen. Julie's bees then drew out the comb and filled the frames with honey and pollen in her second super. Since Julie

continued to feed her bees throughout the summer she needed to add a medium super to her hive which the bees began to fill with honey and pollen. When Ned and Doris Morton did the final fall inspection of Julie's hive, in preparation for winter, they were pleased to find a large number of bees, larvae, honey and pollen. Julie's hive should survive the winter. Julie did not treat her hive for Varroa mites and she did not have a problem with hive beetles.



Empty top feeder

As novice beekeepers the Maun's have made some mistakes in their first year of beekeeping. Their bees stopped feeding from the sugar syrup solution that was in the top feeder on the hive about a week before the bees swarmed in May. The Maun's mistakenly assumed that their bees were finding adequate nectar sources on their foraging trips away from the hive and no longer needed the sugar syrup. What the Maun's didn't know was that prior to swarming the bees would stop feeding and that they would need to continue feeding their bees after they swarmed. The bees that remained after the hive had swarmed, would need to begin feeding again as they began to rebuild the hive. Because the bees were not fed, they did not draw out as much comb on the frames within the hive as they would have had they been fed. This then restricted how much honey and pollen could be stored in the hive for use during the winter months. It also limited where the queen could place her eggs.

The Maun's also did not start feeding their bees soon enough during the latter part of summer when the nectar flow in plants is either reduced or stopped, which is called a dearth. Fortunately, the Maun's mentor, Ned Morton, did a hive inspection and he advised the Maun's to begin feeding their bees. It was during this inspection that the Maun's realized that there was a good possibility that their bees ...continued on page 6



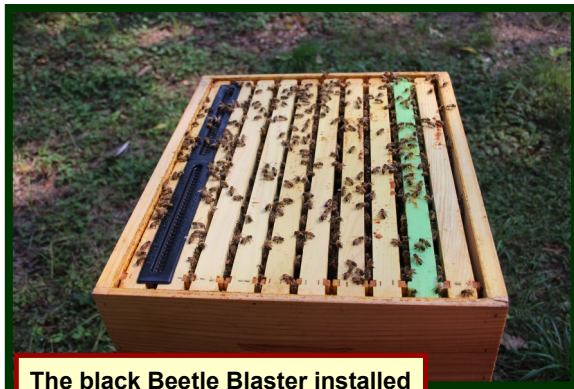
Fall inspection in preparation for winter



Eric the cat, lounges nearby while Ned, Doris and Julie inspect the hive

...continued from page 5 might not survive the winter. The bee population in the hive was not as large as it should have been, the honey stores were adequate, not great, and there was a growing infestation of hive beetles.

The Maun's hive is located on a property with a lot of trees which shade the hive during the day. As the long days of Summer slid into the shorter days of



The black Beetle Blaster installed in the hive

Fall the angle of the sun changed. And with that change in angle, the amount of shade on the hive increased. The few hive beetles that existed in the hive during the summer months exploded

with the decrease in sunlight reaching the hive. At this point, and with Ned's advice, the Maun's installed Beetle Blasters in the hive. The beetle traps were filled with mineral oil and some apple cider vinegar (which attracts the beetles). The beetles crawl into the traps and drown in the oil.



Small Hive Beetle invasion

The Maun's were reluctant to treat for Varroa mites, they did not want to use any chemical treatments on the hive, but with some of the other issues factored in, and also some strong advice from their mentor, they decided to treat the hive in an effort to give their bees every opportunity to survive the winter. In October, during the final inspection of the hive before winter, there were larvae, which indicated that a queen was active in the hive, honey and pollen stores, and a fair number of bees. Ned felt that the hive had a chance of surviving the Winter and he advised the Maun's to inspect the hive on a warm day in January to: first check to see if their bees were still alive, and second, to see if they needed to provide some food for their bees to get through the rest of winter .



Larvae and pollen found during final fall inspection

Contact Information

Great Egg Harbor Watershed Association

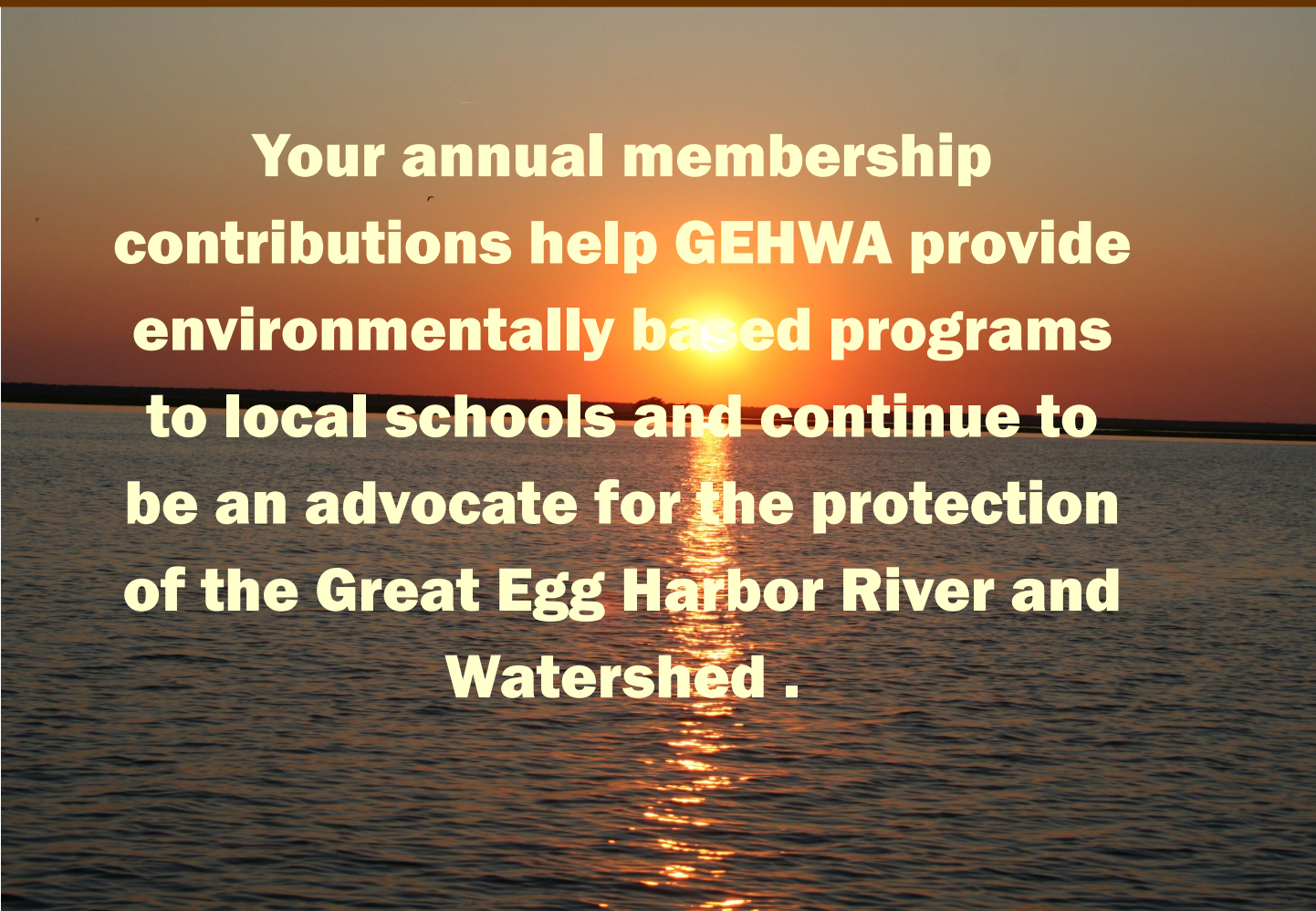
Julie Akers, President (856) 697-6114
Fred Akers, Administrator (856) 697-6114
P. O. Box 109; Newtonville, NJ 08346
Email: fred_akers@gehwa.org
Web Site: www.gehwa.org
Lynn Maun, Coordinator (856) 453-0416
Email: lynnmaun@comcast.net

National Park Service - Paul Kenney (215) 597-5823 Paul_Kenney@nps.gov
NJDEP Watershed Management Office (609) 777-0580
Atlantic County Department of Planning (609) 645-5898
US Army Corps of Engineers (215) 656-6725
NJDEP Regulatory Office for Atlantic County (609) 292-8262
NJDEP Enforcement Officer (732) 255-0787
Pinelands Commission Main Number (609) 894-7300

To report an environmental incident impacting NJ, call the Toll-Free 24—
Hour Hotline **1-877-WARNDEP /**
1-877-927-6337

If you should see debris or shoaling while traversing on New Jersey waters please call:

1-877- WARNDEP
(1-877-927-6337)



**Your annual membership
contributions help GEHWA provide
environmentally based programs
to local schools and continue to
be an advocate for the protection
of the Great Egg Harbor River and
Watershed .**

GEHWA Membership Information

Your membership supports our mission and ensures our survival as a non-profit advocate, as we work to protect and preserve the Great Egg Harbor River and Watershed throughout the year. Your support is needed now more than ever. Without you, we could not exist. Thank you for your support!

Name/Organization: _____

Street Address: _____

City, State and Zip: _____

Phone Number: _____

Email Address: _____

☐ **Yes, I would like to receive notices by Email.**

Annual Membership: Individual: \$10; Family: \$15; Supporting: \$35; Patron: \$50; Corporate: \$100

Please mail this form along with your check to: Great Egg Harbor Watershed Association,
Membership P.O. Box 109, Newtonville, NJ 08346



Great Egg Harbor Watershed Association
PO Box 109
Newtonville, NJ 08345-0109