



# River Currents



Fall 2014

[www.gehwa.org](http://www.gehwa.org)

Issue 64



## Great Egg Harbor Watershed Association Member Meeting

Please join us  
for our Members' Meeting,  
Tuesday November 25, 2014 at 6:30 PM  
and enjoy our program  
"Backyard BUGS"

Please note that the meeting and  
program begin at 6:30 PM

Join us as we explore the amazing variety of insects that can be found during the Spring, Summer and Fall in our backyards. Julie Akers and Lynn Maun have been observing and photographing these fascinating creatures for several years, so be prepared to forget those creepy-crawly phobias and join us for an up close look at local "bugs" that can be found right in our backyard!

We had planned to show this program at our March meeting, but had to cancel due to a snowstorm in the forecast.

The meeting will be held at the Warren Fox Nature Center in Estell Manor Park, Mays Landing  
Call Lynn if you have any questions at 856-649-2792 or email  
[lynnkmaun@comcast.net](mailto:lynnkmaun@comcast.net).

Please plan to attend

# New River Trail Signs in Atlantic County Parks



**From the River Administrator's Desk**

If you are planning a trip on the Great Egg Harbor River take notice of the newly erected signs at Penny Pot, Weymouth Furnace, and Camp Acagisca. The new signs replaced the old brown signs at those locations. In 2013 Conservation Resources Inc. awarded GEHRA a grant in the amount of \$5,750 to purchase and install signs and create and publish a brochure to improve the management

of paddle recreation at Atlantic County Parks. GEHWA and Atlantic County Parks partnered to create the new signs which inform paddlers of the distances between access locations and the approximate time required to reach a destination. The new signs also provide safety tips.

The purpose of the "Great Egg Harbor Water Trails in Atlantic County Parks" project is to provide and improve reasonable and managed public access to 16.9 miles of the Great Egg Harbor National Scenic and Recreational River that passes through and links 1,836 acres of Atlantic County Parkland including Penny Pot Park, Weymouth Furnace Park, and Lake Lenape Park. It also passes through and links the Natural Lands Trusts 180 acre Allen Woods Preserve, the 186 acre Johns Woods Preserve, the 228 acre Three Rivers Preserve, and it passes through and links 743 acres of the Great Egg Harbor River WMA, for a total public access to 3,173 acres of permanently protected open space. This project also promotes consistency with the Pinelands Comprehensive Management Plan and the Comprehensive Management Plan for the Great Egg Harbor National Scenic and Recreational River by providing visitor management and interpretive services objectives which are provisions included in these regional management plans. In addition, this project will provide the public with improved travel information for better trip planning and safety and will promote better managed public access on the Great Egg Harbor River.

## Atlantic County Parks Along the Great Egg Harbor River



**Great Egg Harbor River Water Trails**

Atlantic County Segments	Distance	Time
Penny Pot to Weymouth	9.9 miles	4 - 6 hours
Weymouth to Acagisca	2.7 miles	2 - 3 hours
Acagisca to Lake Lenape	4.3 miles	3 - 4 hours
<b>Totals</b>	<b>16.9 miles</b>	<b>9 - 13 hours</b>

You Are Here  
 Non-County Launch Sites



Atlantic County Division of Parks and Recreation  
 Park Information (609) 625-6219 / Enforcement/Park Ranger (609) 442-9104 / Emergency: 911

- Canoe Trip Tips**
- Plan your trip around your skill level and always wear a life vest. The river can be unpredictable.
  - Be aware - flooding from recent rains can cause swift currents and high water.
  - Allow enough time to finish your trip before dark.
  - Don't paddle alone, and leave a trip plan for safety.
  - Bring a cell phone and place all valuables in a secured dry bag.
  - Remember to bring food and water on your trip.
  - DO NOT LITTER - Carry in carry out - Properly dispose of all trash.

### Great Egg Harbor River Water Trails

Atlantic County Segments	Distance	Time
Penny Pot to Weymouth	9.9 miles	4 - 6 hours
Weymouth to Acagisca	2.7 miles	2 - 3 hours
Acagisca to Lake Lenape	4.3 miles	3 - 4 hours
<b>Totals</b>	<b>16.9 miles</b>	<b>9 - 13 hours</b>

You Are Here  
 Non-County Launch Sites

### Canoe Trip Tips

- Plan your trip around your skill level and always wear a life vest. The river can be unpredictable.
- Be aware - flooding from recent rains can cause swift currents and high water.
- Allow enough time to finish your trip before dark.
- Don't paddle alone, and leave a trip plan for safety.
- Bring a cell phone and place all valuables in a secured dry bag.
- Remember to bring food and water on your trip.
- DO NOT LITTER - Carry in carry out - Properly dispose of all trash.

# GEHWA 2014 Fall Adventure on the Great Egg Harbor River



Paul Kenny next to one of the new river trail signs

we drove a couple of vehicles to Lake Lenape and parked them so that they would be available to transport the kayakers back to the camp at the end of our trip.

Late Saturday morning on the last weekend in September a small group gathered at Camp Acagisca in Mays Landing to paddle the Great Egg Harbor River. Prior to launching our kayakers, we set up our tents, popups and the back of an SUV in preparation to spending the night camping. Once we had setup camp and unloaded the groceries, we transported our kayakers down to the beach. Next



Early afternoon launch from Camp Acagisca

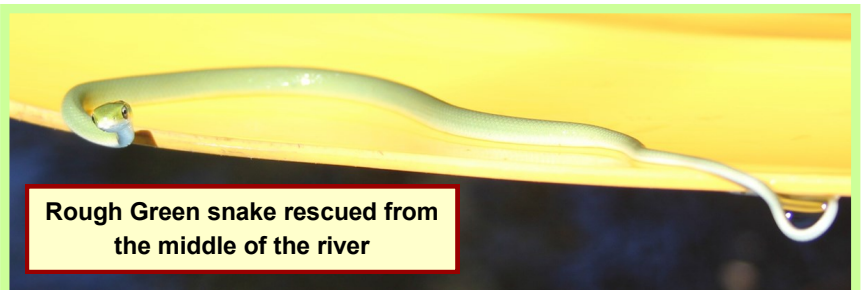


We were on the river by about 1:00 pm. It was a beautiful sunny day. No need for jackets. The water level and the velocity of the river were up following the two plus inches of rain we had had during the week. Once we launched from the river bank our kayakers were caught up in the swiftly moving current. We didn't have to paddle much, other than to maneuver around the twists and turns of the river, until we reached the top of Lake Lenape.

While floating towards Lake Lenape, Julie Akers and Lynn Maun discovered



Rough Green snake expressing its thanks for the rescue



Rough Green snake rescued from the middle of the river

a Rough Green snake caught in the

current and moving downriver with us.

Julie was able to scoop the snake out of the river with the end of her paddle. Since Julie could no longer maneuver with a snake on the end of her paddle, Lynn towed her over to the riverbank so that she could deposit the snake on dry ground. According to [...continued on page 4](#)

...continued from page 3 the Field Guild to Reptiles and Amphibians of New Jersey the “Rough Green snake is hard to find because of its color and shape”. Spotting its bright green body floating on the surface of the tea colored river is easier than trying to spot it hanging out in the vegetation. Though, since it is an “arboreal species found in vegetation overhanging water”, it’s not surprising to find one in the water.

Once we arrived back at camp we began preparations for dinner. We had hamburgers and hotdogs. Stir-fried kielbasa and vegetables, baked beans, salad and pie. Quite a feast. After cleaning up we gathered around the campfire and, of course, had some s'mores.

We began our day Sunday morning with scrambled eggs enhanced with cheese, peppers, onions and ham. Following our fortifying breakfast, we transported our boats to Weymouth Furnace to begin our second day on the river. Again, we had a beautiful day. We had a few more paddlers join us on Sunday. Since the river was moving fast, Ira Grindlinger briefed the group on river safety. We all made the trip back to the beach at Camp Acagisca without any mishaps.

**Sunday morning launch from Weymouth Furnace**



**Please make your calendar's for September 26 & 27, 2015 when we are planning to have our next weekend paddle on the river**



**New River Trail Sign at Weymouth Furnace**

# Lakes Creek Wetland Mitigation Bank

Atlantic County began construction of the first government wetland mitigation bank in New Jersey, Delaware and Pennsylvania on April 29 2013 in Egg Harbor Township. In November 2013 Atlantic County Department of Regional Planning and Development received the Governor's "Environmental Excellence Award" for "Healthy Ecosystems" for the Lakes Creek Wetland Mitigation project.

Construction of the Lakes Creek Wetland Mitigation Bank included lowering the elevation of the agricultural field adjacent to Lakes Creek and increasing the tidal flushing by creating a channel connected to the creek to enhance coastal wetlands. Additional brackish and freshwater areas will also be developed within the bank. The bank will include planted species of grass, bushes and trees. Plantings within the upland forest, freshwater and brackish wetland areas occurred between mid-September and mid-October 2013. Herbaceous plantings within the coastal wetland area were completed between mid-April and mid-May 2014. There will be a minimum five-year maintenance and monitoring phase of the growth and development of plantings, site soils and hydrology, in addition to other factors affecting the bank's success.



May 30, 2013 Aerial view looking southwest over the Lakes Creek Wetland Mitigation Bank site. The topsoil is being stripped and materials are being loaded for transport to the county stockpile site.



Amy Green Environmental Consulting firm was contracted by Atlantic County Department of Planning and Engineering to develop the wetland mitigation bank for the purpose of providing compensatory wetland mitigation credits for anticipated Atlantic County bridge and intersection improvement or replacement projects. Information and a YouTube video about the project can be found at the following websites: <http://amygreene.com/wetlandrestoration4.php> and <https://www.youtube.com/watch?v=334LSNKp2AQ>.

...continued on page 6

September 20, 2013-View looking southwest over the Atlantic County Lakes Creek Wetland Mitigation Bank site near high tide. Although difficult to see, given the scale of the site, the fresh and brackish water areas to the east have been planted as well as the slopes of the project. The tidal flow from Lakes Creek through the newly created channels is clearly evident, stopping just shy of the round tree island marking the edge of the brackish water area. Flooded saltwater areas closest to Lakes Creek will be planted in the spring of 2014.

...continued from page 5

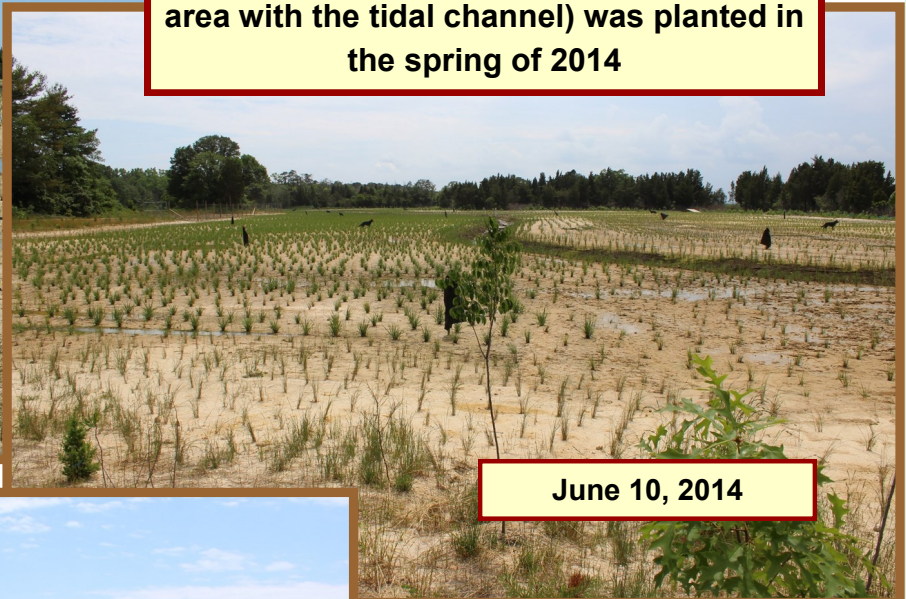
May 20, 2014—Looking southwest. Visible is the entire site with the freshwater wetland area off to the left and the saltwater wetland area to the right, including the tidal channels. Lakes Creek is visible to the west of the bank site running towards the great Egg Harbor River in the distance.



May 17, 2014



Lakes Creek coastal wetland area (the area with the tidal channel) was planted in the spring of 2014



June 10, 2014

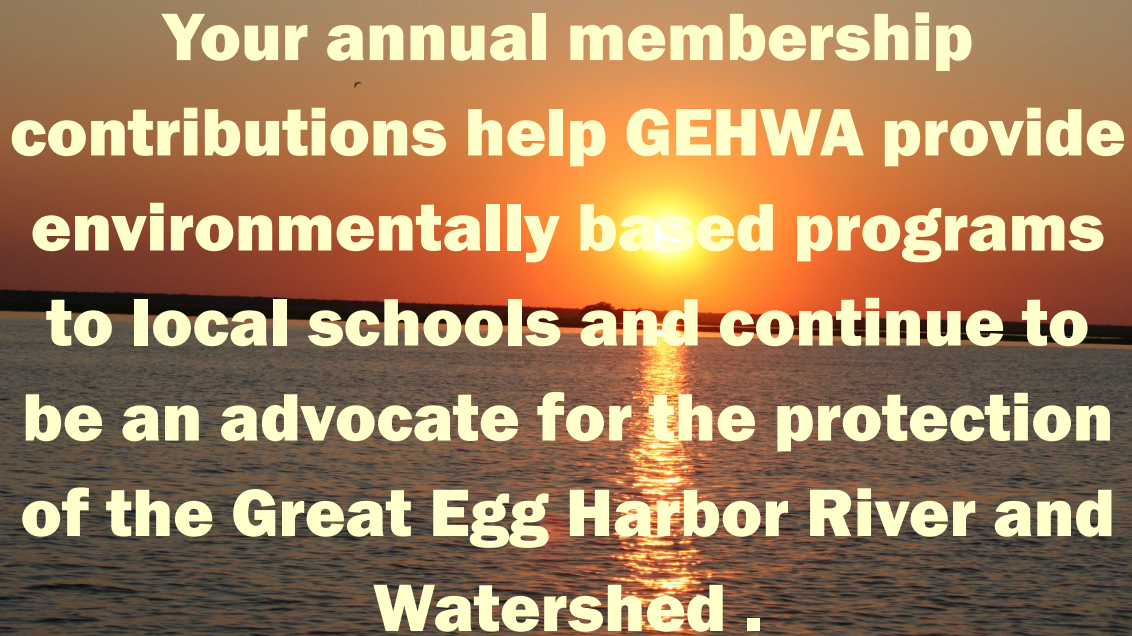


June 27, 2014



September 11, 2014

Additional information and photos can be found at the following website: <http://www.aclink.org/Planning/MainPages/wetlands-mitigation-bank.asp>



**Your annual membership contributions help GEHWA provide environmentally based programs to local schools and continue to be an advocate for the protection of the Great Egg Harbor River and Watershed .**

### **GEHWA Membership Information**

Your membership supports our mission and ensures our survival as a non-profit advocate, as we work to protect and preserve the Great Egg Harbor River and Watershed throughout the year. Your support is needed now more than ever. Without you, we could not exist. Thank you for your support!

Name/Organization: \_\_\_\_\_

Street Address: \_\_\_\_\_

City, State and Zip: \_\_\_\_\_

Phone Number: \_\_\_\_\_

Email Address: \_\_\_\_\_

**Yes, I would like to receive notices by Email.**

**Annual Membership:** Individual: \$10; Family: \$15; Supporting: \$35; Patron: \$50; Corporate: \$100

**Please mail this form along with your check to:** Great Egg Harbor Watershed Association,  
Membership P.O. Box 109, Newtonville, NJ 08346

# Calendar of GEHWA and GEHRC Meetings 2014

*Please make a note of the new meeting time  
All meetings will begin at 6:30 pm*

**Tuesday, November 25, 2014** - GEHWA Member Meeting – The Program will be “Backyard Bugs”

**Wednesday, December 17, 2014** - Great Egg Harbor NS & R River Council & Great Egg Harbor Watershed Association Trustee Annual Meeting

*Please plan on attending.*

## **The Great Egg Harbor Watershed Association's Environmental Programs are FREE**

We offer our environmentally focused programs **free** of charge to augment existing school curriculum. A school's environmental programs are often threatened when faced with annual budget cuts. If you are a parent, and/or an



St. Vincent DePaul student puppet show

educator, and feel our programs would enhance the environmental education that your child/student is receiving, please contact the appropriate individual in your school and request that they take advantage of the Great Egg Harbor Watershed Association's **free** programs. If you would like additional

information please contact Lynn Maun, Education Outreach Coordinator at 856-649-2792 or [lynnkmaun@comcast.net](mailto:lynnkmaun@comcast.net)

**REMEMBER our environmentally focused programs are FREE!**



Student holding a Dragonfly Nymph



Students from Alder Avenue School searching for macroinvertebrates





The GEHWA and the GEHRC have been banding Osprey chicks for 6 yrs. This year 57 chicks were counted and 48 were banded.



### River Council Osprey Colony Project Data Summary

Year	Total Platforms	Active Nests	Chicks Hatched	Chicks Banded	Chicks/Nest
2009	36	19	28	10	1.47
2010	37	16	38	26	2.38
2011	39	20	42	25	2.1
2012	39	22	33	26	1.5
2013	41	21	51	37	2.4
2014	40	25	57	48	2.28

### Contact Information

#### Great Egg Harbor Watershed Association

Julie Akers, President (856) 697-6114

Fred Akers, Administrator (856) 697-6114

P.O. Box 109, Newtonville, NJ 08346

Email: fred\_akers@gehwa.org

Web Site: [www.gehwa.org](http://www.gehwa.org)

Lynn Maun, Coordinatr (856) 649-2792

Email: lynnkmaun@comcast.net

#### National Park Service

Paul Kenney (215) 597-5823; Paul\_Kenney@nps.gov

#### NJ DEP Watershed Management Office

(609) 777-0580

#### Atlantic County Department of Planning

(609) 645-5898

#### US Army Corps of Engineers (215) 656-6725

#### NJ DEP Regulatory Office for Atlantic County

(609) 292-8292

#### NJ DEP Enforcement Officer (732) 255-0787

#### Pinelands Commission

(609) 894-7300

#### NJ DEP Hotline 1-877 WARN DEP

To report an environmental incident impacting NJ, call the Toll-Free  
24—Hour Hotline  
**1-877WARNDEP**  
**1-877-927-6337**

If you should see debris or shoaling while traversing on New Jersey waters please call:  
**1-877- WARNDEP**  
**(1-877-927-6337)**

Great Blue Heron



Great Egg Harbor Watershed Association  
PO Box 109  
Newtonville, NJ 08345-0109