



Spring 2016

www.gehwa.org

Issue 67

River Herring Observed Returning to Great Egg Harbor in April 2016

By: Fred Akers, Administrator

For several years now, very few river herring have been observed returning to the Great Egg Harbor River and its tributaries in the historic spawning areas.

In 2012, the Division of Fish and Wildlife completely closed the river herring fishery in state waters, and possession of a river herring is now against the law here in New Jersey.

The Great Egg Harbor River Council has been working with the Mid-Atlantic Fisheries Management Council, Pew Charitable Trust, Earthjustice, Natural Resources Defense Council, and others to increase the protections for river herring when they are in federal waters.

We have been trying to find the local presence of river herring in the spring for several years now with little success, until this spring.

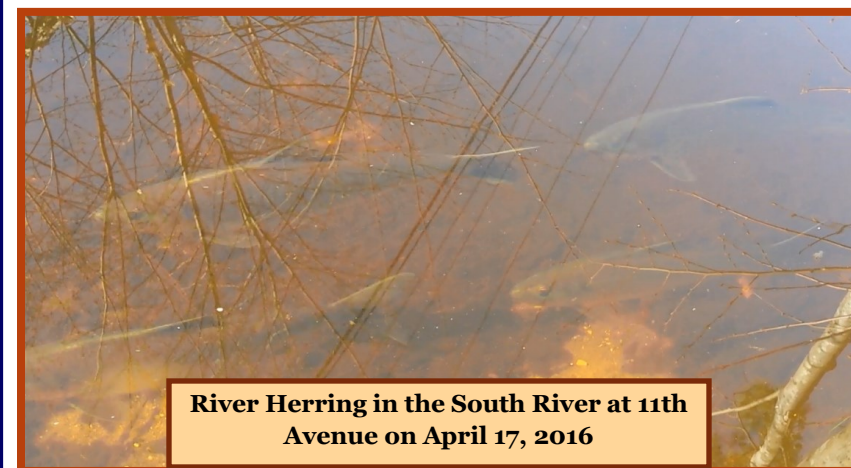
On April 16, we received a call from Elmer Ripley that the river herring were running fairly thick in Babcock Creek in the Sugar Hill area.

On April 17, Julie Akers and I observed breeding river herring at 3 locations, the old Trestle Bridge in Mays Landing, upstream from the Mill Street Bridge in Mays Landing just below the Lake Lenape Dam, and in the South River at the 11th Avenue Bridge near Belcoville.

That same day, Bill Stuempfig observed “many” river herring at Head of River by Route 49 on the Tuckahoe River.



River Herring in the South River at 11th Avenue on April 17, 2016



River Herring in the South River at 11th Avenue on April 17, 2016

Also in the same time period, Jim Owen observed river herring in Stephen Creek below Route 50 in Estell Manor, and Bill Christman observed river herring in the Great Egg Harbor River near Gravelly Run.

All these observations from different locations this year is good news for our efforts to try and bring back the abundant river herring runs of the past, and it is also a testament to the vigilance of those folks who remember and value the presence of river herring in our waters.

Join us on Tuesday July 26, 2016
for our 11th Annual Picnic and Campfire
From 5:30 P.M. until 9:00 P.M.
at Lake Lenape Park
6303 Old Harding Hwy., Mays Landing



Hamburgers (Veggie Burgers too) and Hotdogs will be provided. Please bring a tasty salad/side dish or dessert to share. The picnic begins at 5:30 P.M. and the CAMPFIRE/Storytime will begin at 7:00 P.M. If you plan on attending the picnic please RSVP Lynn Maun at 856-649-2792 or email: lynnkmaun@comcast.net with a count

for your family so that we will know how much food is needed. We hope that you can join us and look forward to seeing you. If you have a good campfire story that you would like to share, please let us know. Thank you.





**From the River
Administrator's Desk**

Great Egg Harbor River Council and Army Veterans are for the Birds

By Fred Akers

Starting in 2007, the Great Egg Harbor River Council began installing additional Osprey nesting platforms on the Tuckahoe, Middle, and Great Egg Harbor Rivers at the request of the New Jersey Division of Fish and Wildlife.

By 2009, the River Council had added 15 new platforms, increasing the total number of nesting platforms from 21 to 36 in the Great Egg Harbor area west of the Garden State Parkway. Many of the Great Egg Harbor River Councilors volunteered to install these new platforms.



Because of the time and effort involved with monitoring and maintaining all these Osprey nesting platforms, the NJ Division of Fish and Wildlife requested that the River Council take over the monitoring and maintenance of this 36 platform Osprey colony.

Since this would be a great river stewardship program for the Great Egg Harbor River Council, I signed up for a state Osprey banding permit and volunteered a motorboat and extension ladder to start the annual monitoring and maintaining of all these nesting platforms, which

includes an abundant Osprey population.

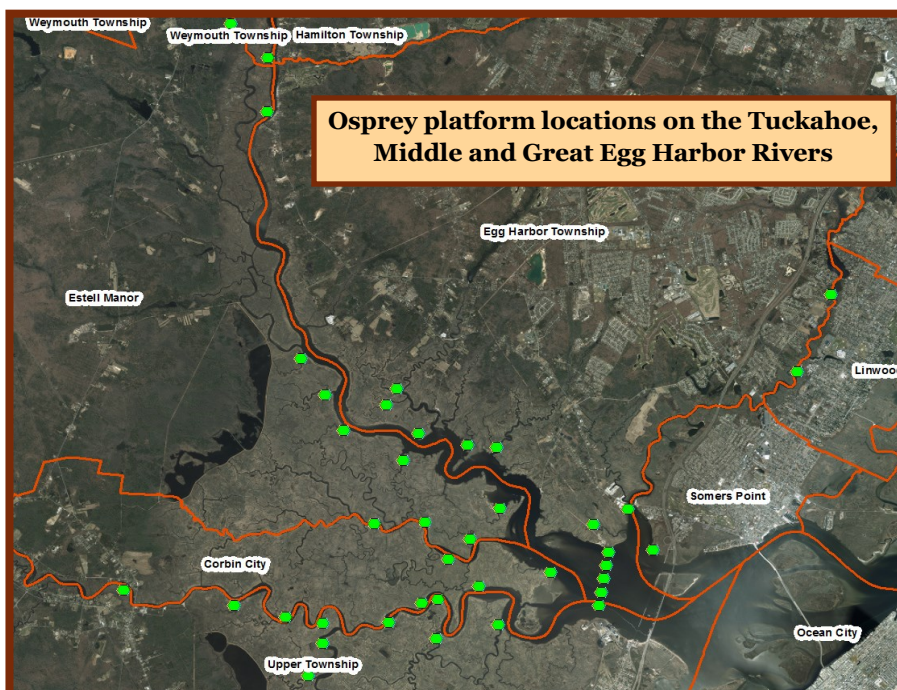
Education and Outreach Coordinator Lynn Maun and I have conducted Osprey chick counts, chick bandings, and nest cleanings for the past 7 years.

The Osprey successful chick fledging productivity has been up and down over the years due mostly to bad weather early in the nesting season, which is primarily April through August.

.... continued on page 4



**Osprey platform following the removal
of nesting material**



**Osprey platform locations on the Tuckahoe,
Middle and Great Egg Harbor Rivers**

... continued from page 3 We continue to add new platforms for a total of 40 in 2015. The 7 year data summary is below.

River Council Osprey Colony Project Data Summary				
Year	Total Platforms	Active Nests	Chicks Hatched	Chicks/Nest
2009	36	19	28	1.47
2010	37	16	38	2.38
2011	39	20	42	2.1
2012	39	22	33	1.5
2013	41	21	51	2.4
2014	40	25	57	2.28
2015	41	20	34	1.7

Every year the weather and time take their toll on the older Osprey platforms, and it is a substantial investment in time and effort to maintain and replace old platforms when they fall apart.



Last year, we identified 3 platforms that needed to be removed and replaced. I can build them and stage them on the marsh myself or with one helper, but it usually takes 5 to 6 people to push them up and plant them safely and securely in the marsh.

But this year, it only took 3 U.S. Army Veterans to help me do the job. On March 23, Jim Akers, Chuck Young, and Frank Baker came out on the marsh with me and removed and installed 3 new platforms, and fixed a 4th platform we found that was about to fall over.



Left to Right: Jim Akers, Chuck Young and Frank Baker

Thanks to Jim, Chuck, and Frank for helping both the Great Egg Harbor River Council and the Osprey nesting colony this year!

Become a Citizen Scientist Looking for a Way to Get Involved?

Fun with Frogs! <https://www.aza.org/frogwatch/>

FrogWatch USA is a frog and toad monitoring program where volunteers learn the calls of local frog species, identify them by song in the field and record their findings online. No formal training is required, except a willingness to learn the frog and toad calls in your area.

The Beauty of Birds <http://www.birds.cornell.edu/page.aspx?pid=1664#citsciThemeHighlights=2>

The Cornell Lab of Ornithology manages 12 bird citizen science programs, including Project Feederwatch, NestWatch and eBird. With such a vast diversity of projects, you are sure to find one that fits your family.

Fabulous Firefly Festivities <https://legacy.mos.org/fireflywatch/>

Boston's Museum of Science wants you to monitor fireflies. With an occasional visit to your backyard to count fireflies, you could be helping scientists around the country study firefly behavior and population changes.

Monarch Mayhem! <http://www.monarchwatch.org/>

Each year, the University of Kansas monitors the autumn migration of monarch butterflies. Join them this fall and record data on monarchs that fly through your community on their journey south. Also learn how to build a monarch waystation.

Monarch Butterfly Journey North <http://www.learner.org/jnorth/monarch/>

Join students and scientists across North America this spring to track the monarch butterfly's migration from Mexico!

Birds in Your Backyard <http://gbbc.birdcount.org/>

The National Audubon Society hosts a yearly end of winter bird count called the Great Backyard Bird Count. Anyone can participate no matter your skill level or location in the US and Canada.

Be a Star Gazer http://www.windows2universe.org/citizen_science/starcount/index.html

During the month of October, join citizen scientists worldwide as they try to observe constellations after sunset. The study gauges the impact of light pollution on your ability to see the stars and constellations at night.

BugGuide <http://bugguide.net/node/view/15740>

Bug Guide is an online community where naturalists share their photos and observations about a variety of creatures, including spiders and other insects. They use the in-house expertise of scientists and amateur experts to collect information and identify a diversity of bug species in the United States and Canada.

Project BudBurst <http://budburst.org/>

Climate and climate change are the focus of Project BudBurst. Project BudBurst is a network of people across the United States who monitor the leafing, flowering, and fruiting of plants. This project fosters collaboration among gardeners, scout troops, hikers, botanists, ecologists, government agencies, and educators to monitor climate change and its impacts on plants.

South Jersey Butterfly Project

Our Sightings Log: <https://sjbutterflies.org/>. And our South Jersey Butterfly Blog: <https://blogs.stockton.edu/sjbfs/>

HAVE FUN—GET INVOLVED

Calendar of GEHWA and GEHRC Meetings 2016

All meetings held at the Warren Fox Nature Center in Estell Manor will begin at 6:30 PM.



Tuesday, July 26, 2016 - GEHWA Member & Friends Picnic and Campfire (Lake Lenape Park, Mays Landing 5:30pm)

Wednesday, August 17, 2016 - Great Egg Harbor NS & R River Council Meeting



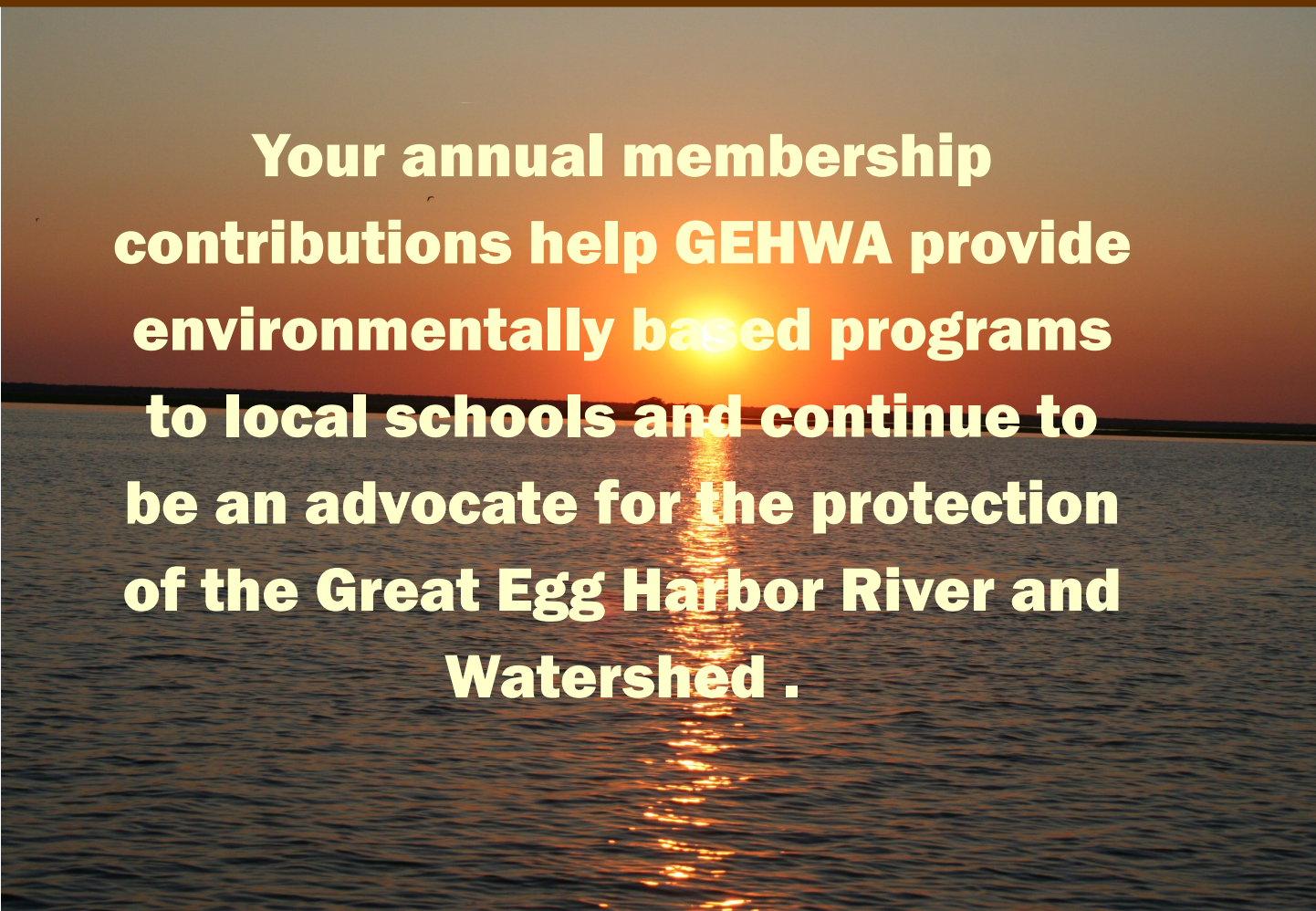
Saturday, September 24, 2016 GEHWA Canoe/Kayak event on the Great Egg Harbor River (Details will be provided closer to the event).

Wednesday, October 19, 2016 - Great Egg Harbor NS & R River Council Meeting

Tuesday, November 22, 2016 - GEHWA Member Meeting— Program to be announced.

Wednesday, December 21, 2016 - Great Egg Harbor NS & R River Council & Great Egg Harbor Watershed Association Trustee Annual Meeting

Please plan on attending these events.



**Your annual membership
contributions help GEHWA provide
environmentally based programs
to local schools and continue to
be an advocate for the protection
of the Great Egg Harbor River and
Watershed .**

GEHWA Membership Information

Your membership supports our mission and ensures our survival as a non-profit advocate, as we work to protect and preserve the Great Egg Harbor River and Watershed throughout the year. Your support is needed now more than ever. Without you, we could not exist. Thank you for your support!

Name/Organization: _____

Street Address: _____

City, State and Zip: _____

Phone Number: _____

Email Address: _____

☐ **Yes, I would like to receive notices by Email.**

Annual Membership: Individual: \$10; Family: \$15; Supporting: \$35; Patron: \$50; Corporate: \$100

Please mail this form along with your check to: Great Egg Harbor Watershed Association,
Membership P.O. Box 109, Newtonville, NJ 08346

The Great Egg Harbor Watershed Association's Environmental Programs are **FREE**

We offer our environmentally focused programs **free** of charge to augment existing school curriculum. A school's environmental programs are often



St. Vincent DePaul student puppet show

threatened when faced with annual budget cuts. If you are a parent, and/or an educator, and feel our programs would enhance the environmental education that your child/student is receiving, please contact the appropriate individual in your school and request that they take advantage of the Great Egg Harbor Watershed



Student holding a Dragonfly Nymph

Association's **free** programs. If you would like additional information please contact Lynn Maun, Education Outreach Coordinator at 856-649-2792 or lynnkmaun@comcast.net

REMEMBER our environmentally focused programs are FREE!



Students from Alder Avenue School searching for macroinvertebrates

Contact Information

Contact Information	
Great Egg Harbor Watershed Association	Atlantic County Department of Planning
Julie Akers, President (856) 697-6114	(609) 645-5898
Fred Akers, Administrator (856) 697-6114	
P.O. Box 109, Newtonville, NJ 08346	US Army Corps of Engineers (215) 656-6725
Email: fred_akers@gehwa.org	
Web Site: www.gehwa.org	NJ DEP Regulatory Office for Atlantic County
Lynn Maun, Coordinator (856) 649-2792	(609) 292-8292
Email: lynnkmaun@comcast.net	
	NJ DEP Enforcement Officer (732) 255-0787
National Park Service	
Paul Kenney (215) 597-5823;	Pinelands Commission
Paul_Kenney@nps.gov	(609) 894-7300
NJ DEP Watershed Management Office	NJ DEP Hotline 1-877 WARN DEP
(609) 777-0580	

To report an environmental incident impacting
NJ, call the Toll-Free 24—Hour Hotline
1-877WARNDEP, 1-877-927-6337

If you should see debris or shoaling while
traversing on New Jersey waters please call:
1-877- WARNDEP (1-877-927-6337)

**Ribbon worm provided a
sci-fi moment**



Great Egg Harbor Watershed Association
PO Box 109
Newtonville, NJ 08345-0109