



Winter 2019

www.gehwa.org

Issue 71

Great Egg Harbor Watershed Association's 1st Member and Friends Meeting & Program of 2019

GEHWA Members and Friends are invited to join us on, Tuesday, January 22, 2019 at 6:30 PM when Fred Akers will present "The Incredible Opportunities for Active and Passive Recreation On and Around the Great Egg Harbor River"



The meeting will be held at the Warren Fox Nature Center, in Estell Manor Park, 109 State Highway 50, Mays Landing, NJ 08330

As a Unit of the National Park System, the Great Egg Harbor National Scenic and Recreational River received a mandate from the National Park Service in 2018 to provide an assessment for opportunities to enhance or expand appropriate outdoor recreation activities or improve visitor experience, management, facilities or services across the system.

To address this request, River Administrator Fred Akers undertook the first every comprehensive inventory of all of the river corridor's recreational opportunities from Berlin Park down to the Garden State Parkway.

Call or text Julie @ 609-432-3280 or call Fred @ 856-697-6114 in case of **inclement weather** or if you have any questions.

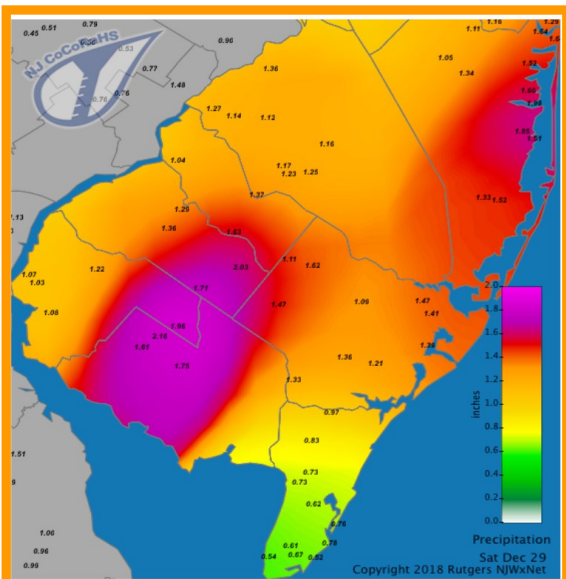
NJ CoCoRaHS Volunteers Needed

Please Join Today

GEHWA has been actively involved with the NJ CoCoRaHS network since 2008. CoCoRaHS—an acronym for the Community Collaborative Rain, Hail, and Snow Network—is a nationwide network of volunteer weather observers. The New Jersey CoCoRaHS network began on Groundhog Day, February 2, 2008. Eleven years later, we are still actively involved. Currently in NJ, there are 420 active volunteers reporting precipitation to the nationwide network.

CoCoRaHS is used by a wide variety of organizations and individuals. The National Weather Service, other meteorologists, hydrologists, emergency managers and many others. The data collected by volunteers within the Great Egg Harbor Watershed provides valuable information that can be used

to assess the health of the Great Egg Harbor River and Watershed in its entirety.



Precipitation includes rainfall and melted snow/ice.
All reports are taken between 5 AM and 9 AM and are valid for the previous 24 hours.

The map to the left shows the location of stations in South Jersey that reported precipitation on Saturday, December 29, 2018. There are many blank areas where additional CoCoRaHS stations are NEEDED. Additional stations would help to provide a more comprehensive understanding about the precipitation that has fallen on a given area. This data could alert officials to an area experiencing either an extreme weather event that could result in flooding or droughty conditions, both of which would enable officials to alert residents in that particular area.

Wherever you live in NJ, either within the Great Egg Harbor Watershed or not, please consider joining or encouraging someone you know, to join this rewarding and valuable “Citizen Science” program. CoCoRaHS is also a great way to foster a child’s interest in the environment. With help from an adult, a child will learn about precipitation and have access to online data and precipitation maps. The CoCoRaHS website at www.cocorahs.org provides detailed information about joining the network, setting up your rain gauge and reporting your precipitation data.



A Rain Gauge would make a great gift. GEHWA sells the official 4” CoCoRaHS Rain Gauge for \$31.00. If you would like to purchase a rain gauge please contact *Lynn Maun at 856-649-2792 or email lynnkmaun@comcast.net*

Remember, as cold weather sets in to remove the funnel and inner cylinder of the CoCoRaHS rain gauge. The inner cylinder will crack when ice forms in it. The funnel will block snow from entering the gauge.

Official 4” Rain Gauge \$31.00





**From the River
Administrator's Desk**

Open Space Preservation

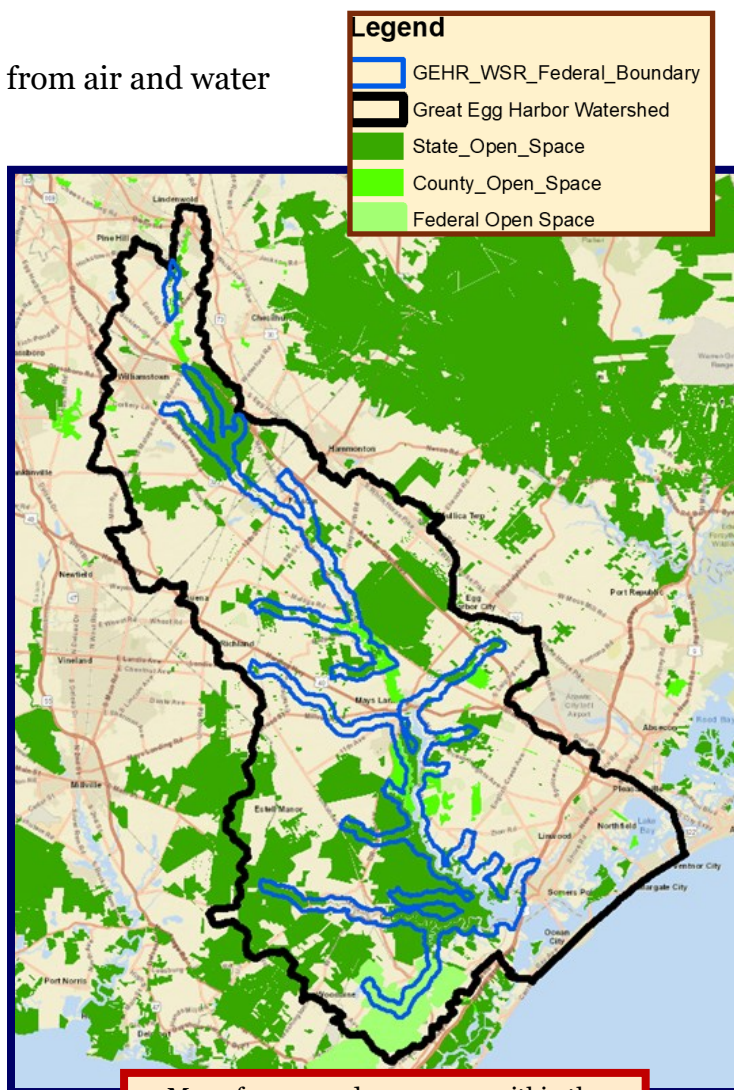
One very important tool to protect watersheds is for the public to purchase undeveloped lands and permanently preserve them. Some of the many public benefits of preserved open space are to:

- ♦ Protect drinking water
- ♦ Lessen pollution by absorbing contaminants from air and water
- ♦ Reduce flooding
- ♦ Provide places to fish, swim, boat, hunt, hike, and watch wildlife
- ♦ Protect forests, rivers, and natural areas,
- ♦ Prevent overdevelopment

To help fund the protection of thousands of acres of open space in our watershed, voters have approved local open space taxes in Atlantic County, Gloucester County, Camden County, Berlin Borough, Berlin Township, Egg Harbor Township, Franklin Township, Gloucester Township, Monroe Township, and Weymouth Township.

State government and the Federal government have also made significant investments in open space preservation in our watershed through the voter approved Green Acres Garden State Preservation Trust, the Pinelands Conservation Fund, and the federal Land and Water Conservation Fund. These larger state and federal funds are often used to match local open space funds, adding to their value.

With the ever increasing pressure to build more developments in the watershed, it is very important to understand and promote the great public benefits of more open space preservation to elected officials and the public.



Map of preserved open space within the
Great Egg Harbor Watershed Boundary



**Spring is Right Around the Corner and Is a Time When Our Usage of Water Increases.
So, Help Improve the Water Quality of the Great Egg Harbor River and Watershed By Following the Suggestions Below**

Your everyday activities can affect water quality. Reduce your water usage by following the tips below.

- Water lawns (and outdoor plants) less frequently (2-3 times per week) for no more than 30 minutes. This allows the soil to absorb the water and enables roots to grow more deeply, which encourages drought tolerance;
- Never water during the heat of the day, as this promotes evaporation and leads to water waste;
- Sprinkler systems should be set to water after sunset or before dawn, and by law should be equipped with an automated shut-off switch that disables the system following rainfall.
- Install water-saving showerheads and faucet aerators in the bathroom and kitchen (available at most home improvement stores and some supermarkets);
- Do not let faucets run when brushing your teeth or washing the dishes;
- Run washing machines and dishwashers only when they are full, or select the properly sized wash cycle for the current laundry load;
- Use a broom to sweep the sidewalk, rather than a hose;
- Use mulch and native plants to conserve water in the garden;
- Use a rain barrel to capture water from a downspout to use later for watering gardens and plants;
- Use soaker hoses or drip irrigation to water trees, gardens and flower beds;

Calendar of GEHWA and GEHRC Meetings

2019

All meetings held at the Warren Fox Nature Center in Estell Manor (except where noted) will begin at 6:30 PM.

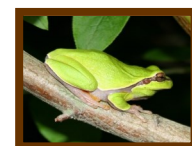
Tuesday, January 22, 2019- GEHWA Member Meeting - “The Incredible Opportunities for Active and Passive Recreation On & Around the Great Egg Harbor River”

Wednesday, February 20, 2019 - Great Egg Harbor NS & R River Council Meeting—Annual Reorganization Meeting

Tuesday, March 26, 2019- GEHWA ANNUAL Member Meeting & Program

Wednesday, April 17, 2019 - Great Egg Harbor NS & R River Council Meeting

Tuesday, May 28, 2019- GEHWA Member Meeting—Annual Frog Walk (Details will be provided closer to the event)



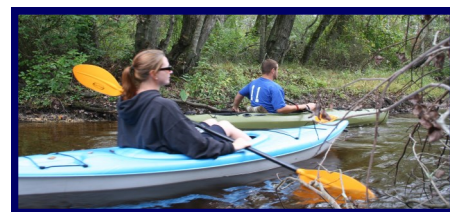
Wednesday, June 19, 2019- Great Egg Harbor NS & R River Council Meeting

Tuesday, July 23, 2019 - GEHWA Member & Friends Picnic and Campfire (Location and details will be provided closer to the event)



Wednesday, August 21, 2019 - Great Egg Harbor NS & R River Council Meeting

Saturday, September 28, 2019 GEHWA— Canoe/ Kayak event on the Great Egg Harbor River



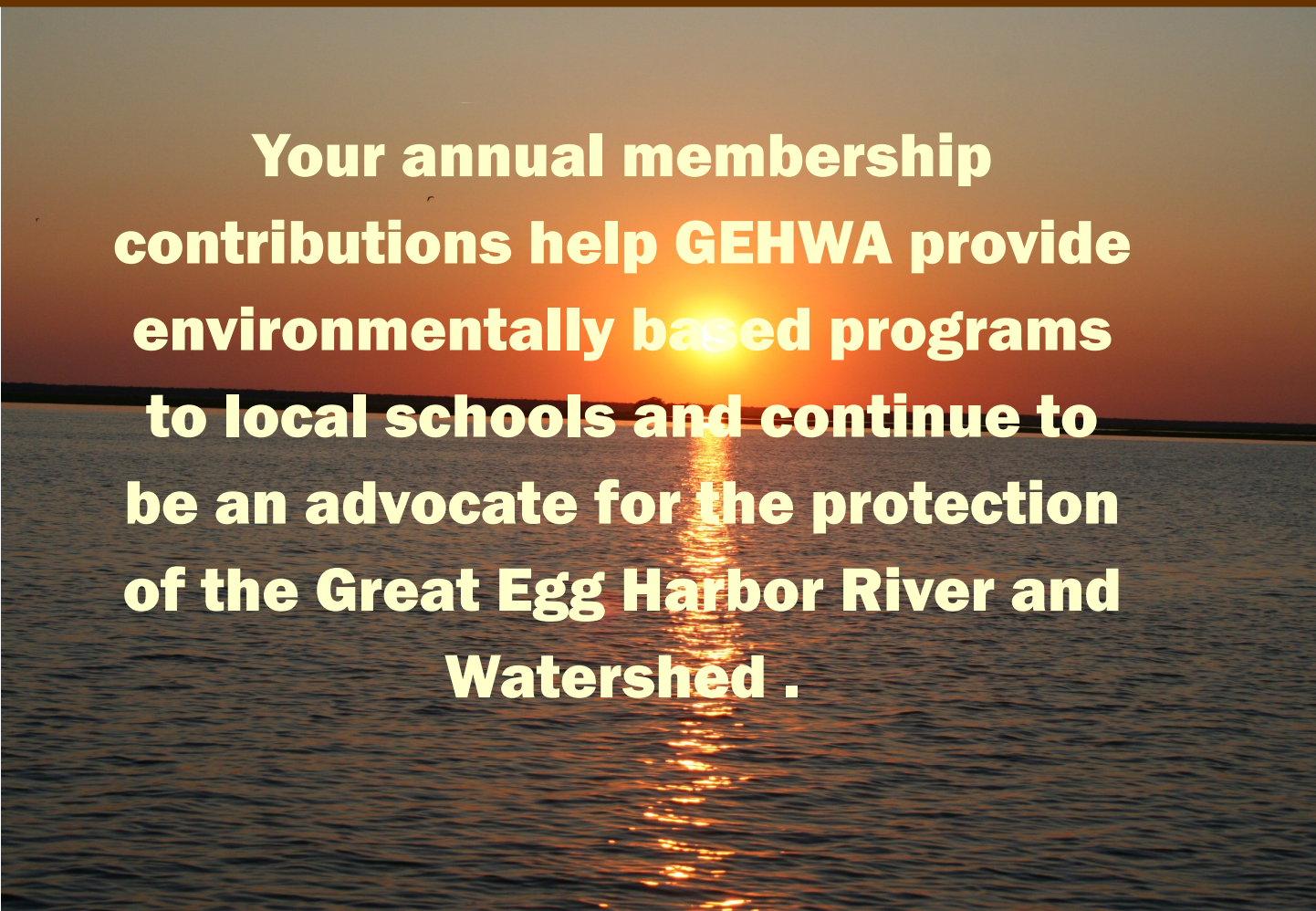
Wednesday, October 16, 2019 - Great Egg Harbor NS & R River Council Meeting

Tuesday, November 26, 2019 - GEHWA Member Meeting— Program to be announced.

Thursday, December 12, 2019—Great Egg Harbor Watershed Association Annual Trustee Meeting (6:00 PM Harley Dawn Diner, Hammonton)

Wednesday, December 18, 2019 - Great Egg Harbor NS & R River Council Meeting

Please plan on attending these events.



**Your annual membership
contributions help GEHWA provide
environmentally based programs
to local schools and continue to
be an advocate for the protection
of the Great Egg Harbor River and
Watershed .**

GEHWA Membership Information

Your membership supports our mission and ensures our survival as a non-profit advocate, as we work to protect and preserve the Great Egg Harbor River and Watershed throughout the year. Your support is needed now more than ever. Without you, we could not exist. Thank you for your support!

Name/Organization: _____

Street Address: _____

City, State and Zip: _____

Phone Number: _____

Email Address: _____

☐ **Yes, I would like to receive notices by Email.**

Annual Membership: Individual: \$10; Family: \$15; Supporting: \$35; Patron: \$50; Corporate: \$100

Please mail this form along with your check to: Great Egg Harbor Watershed Association,
Membership P.O. Box 109, Newtonville, NJ 08346

The Great Egg Harbor Watershed Association's Environmental Programs are FREE

We offer our environmentally focused programs **free** of charge to augment existing school curriculum. A school's environmental programs are often



St. Vincent DePaul student puppet show

threatened when faced with annual budget cuts. If you are a parent, and/or an educator, and feel our programs would enhance the environmental education that your child/student is receiving, please contact the appropriate individual in your school and request that they take advantage of the Great Egg

Harbor Watershed Association's **free** programs. If you would like additional information please contact Lynn Maun, Education Outreach Coordinator at 856-649-2792 or lynnkmaun@comcast.net

REMEMBER our environmentally focused programs are FREE!



Student holding a Dragonfly Nymph



Students from Alder Avenue School searching for macroinvertebrates

Contact Information

Great Egg Harbor Watershed Association		Atlantic County Department of Planning	
Julie Akers, President (856) 697-6114		(609) 645-5898	
Fred Akers, Administrator (856) 697-6114			
P.O. Box 109, Newtonville, NJ 08346		US Army Corps of Engineers (215) 656-6725	
Email: fred_akers@gehwa.org			
Web Site: www.gehwa.org		NJ DEP Regulatory Office for Atlantic County	
Lynn Maun, Coordinatr (856) 649-2792		(609) 292-8292	
Email: lynnkmaun@comcast.net			
		NJ DEP Enforcement Officer (732) 255-0787	
National Park Service			
Paul Kenney (215) 597-5823; Paul_Kenney@nps.gov		Pinelands Commission	
		(609) 894-7300	
NJ DEP Watershed Management Office			
(609) 777-0580		NJ DEP Hotline 1-877 WARN DEP	

To report an environmental incident impacting
NJ, call the Toll-Free 24—Hour Hotline
1-877WARNDEP, 1-877-927-6337

If you should see debris or shoaling while
traversing on New Jersey waters please call:
1-877- WARNDEP (1-877-927-6337)



Great Egg Harbor Watershed Association
PO Box 109
Newtonville, NJ 08346-0109