

# Recreation Inventory of the Great Egg Harbor National Scenic and Recreational River National Park (GREG)

Fred Akers, Administrator, Great Egg Harbor National Scenic and Recreational River Council, September 23, 2020

**In 1992, Congress designated 129 miles of the Great Egg Harbor River, including parts of 17 tributaries and its tidal estuary, as both components of the National Wild and Scenic Rivers System, and a National Park.**

**Public Law 102-536, Section 2, states that:**

(a) DUTIES OF SECRETARY.—The Secretary of the Interior shall manage the river segments designated as components of the National Wild and Scenic Rivers System by this Act through cooperative agreements with the political jurisdictions within which such segments pass, pursuant to section 10(e) of the Wild and Scenic Rivers Act, and in consultation with such jurisdictions, except that publicly-owned lands within the boundaries of such segments shall continue to be managed by the agency having jurisdiction over such lands.

## **Great Egg Harbor River Recreation Inventory Table of Contents**

<b>Outdoor Recreation on the Great Egg Harbor River Summary.....</b>	<b>03</b>
<b>GREG Management Metrics.....</b>	<b>04</b>
<b>GREG Financial Metrics.....</b>	<b>05</b>
<b>GREG Recreational Metrics.....</b>	<b>06</b>
<b>GREG Recreation Inventory Watershed Approach.....</b>	<b>07</b>
<b>GREG Recreation Lands Summary.....</b>	<b>08</b>
<b>GREG Recreation Lands Inventory.....</b>	<b>09</b>
<b>GREG Water Trails.....</b>	<b>37</b>
<b>GREG Tidal River Recreation.....</b>	<b>40</b>
<b>GREG Recreation Events.....</b>	<b>42</b>

## **Outdoor Recreation on the Great Egg Harbor River Summary**

**The Great Egg Harbor National Scenic and Recreational River was the first Wild & Scenic River in America to be fully managed by local jurisdictions in partnership with the National Park Service; the first Partnership Wild and Scenic River, dubbed “GREG”.**

**Of the 129 river miles designated by Congress in 1992, 98.4 miles were designated as “Recreational”, in recognition of the National Outstanding Resource Value of recreation on the Great Egg Harbor River, which flows through non-federal lands.**

**Outdoor recreational opportunities on the GREG and its watershed were vast and abundant when the river was studied in 1988 and have increased greatly to date. Today there are over 127,000 acres of recreational lands on and around the GREG.**

**Boating of all types, fishing, hunting, hiking, camping, birding, wildlife viewing, photography, cross country skiing, picnicking, mountain biking, ball fields, playgrounds and sports courts are all abundantly available on or near the river.**

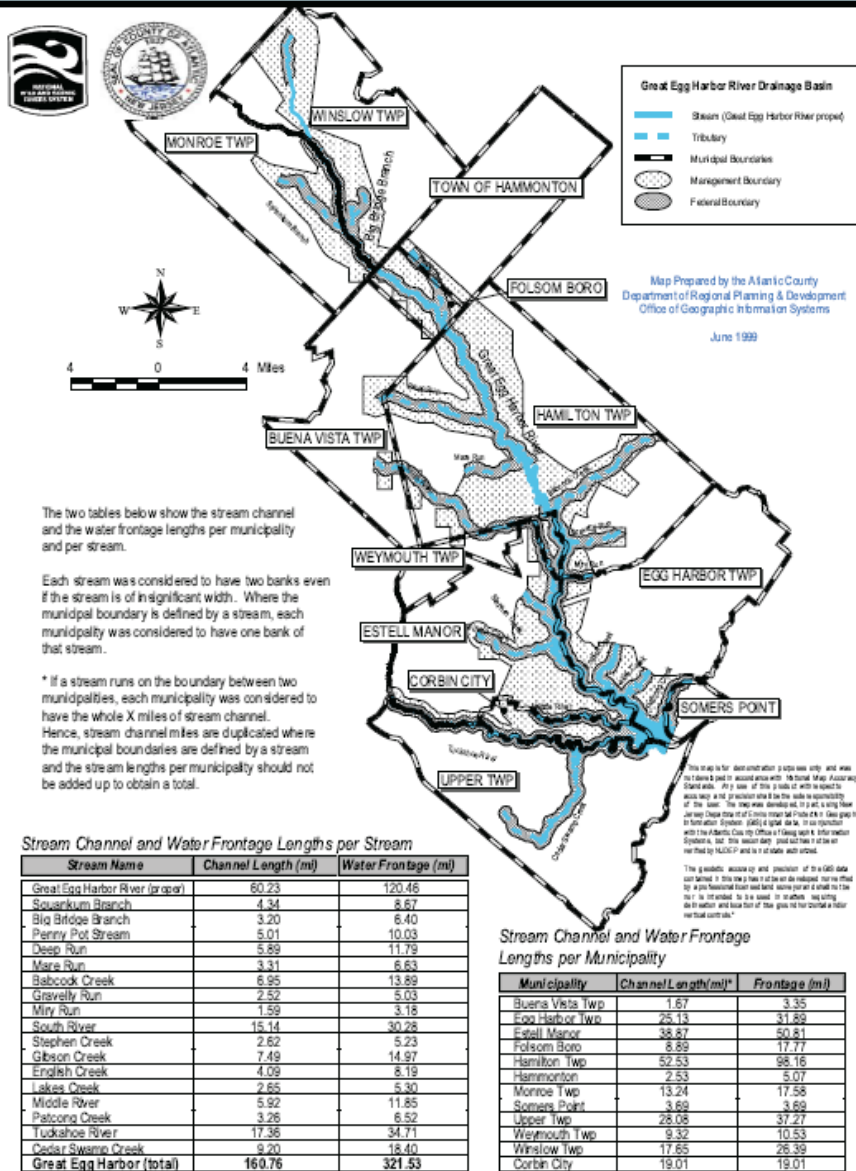
**In addition to the vast recreational opportunities on public open space, there are 16.9 miles of mapped non-tidal water trails that are heavily exploited by hundreds of both commercial and private recreational users per day from late spring through early fall.**

**Approximately 65% (84.7 miles) of the GREG is tidal river and tidal tributaries, with over 40 public access sites and private marinas which make this area highly accessible to both motorized and non-motorized boats.**

**The river trail and tidal areas of the river are recreationally overused during the summer months, and there is some concern regarding compliance to the Organic Act that Outstanding River Values should be left unimpaired for future generations.**

**The Great Egg Harbor River Council tracks the recreational inventory of the GREG, and this report will be updated periodically and posted on the Great Egg Harbor Watershed Association Website.**

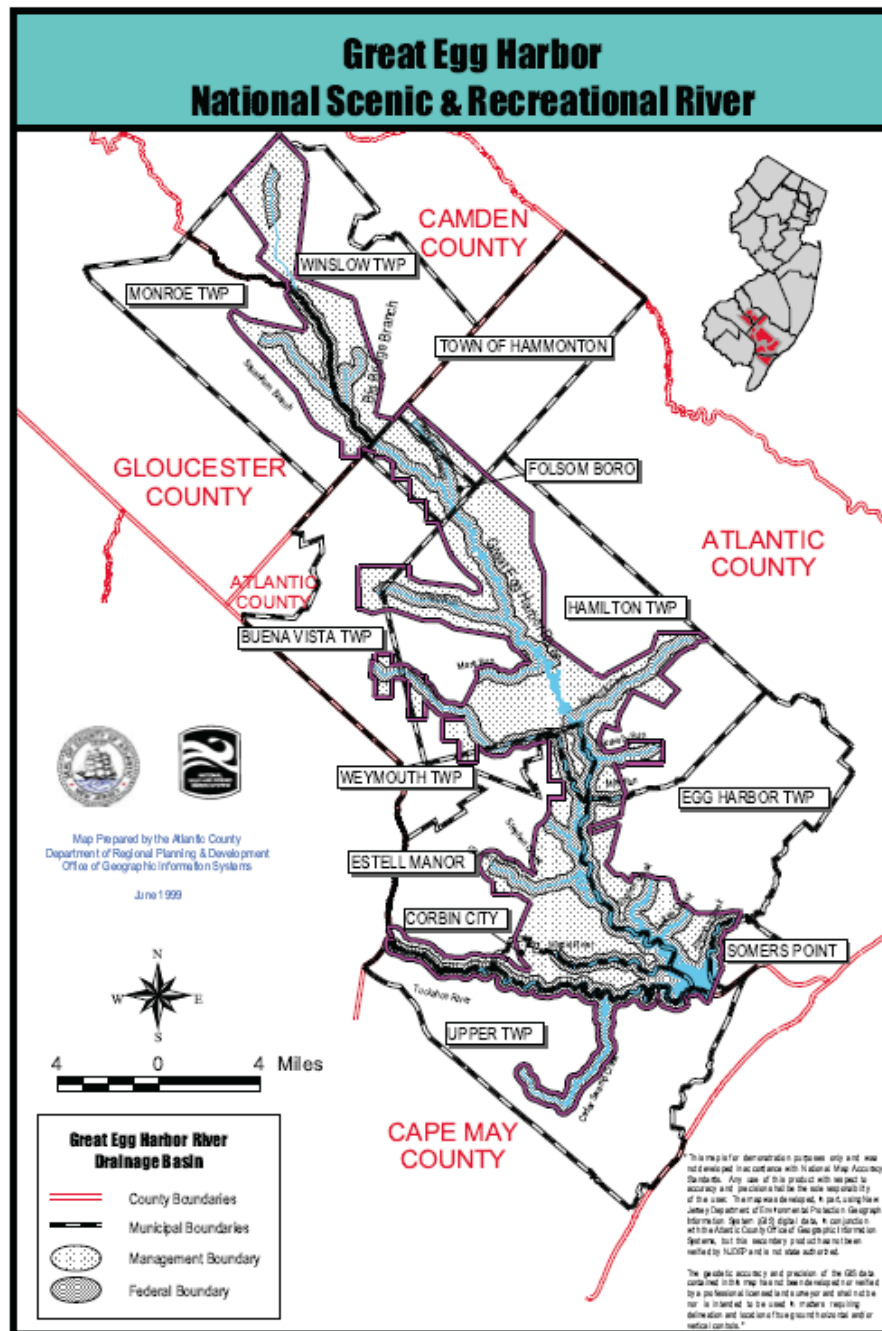
## Channel Length and Water Frontage Great Egg Harbor River



## Management Metrics

The political jurisdictions within which the designated segments pass are principally 12 municipalities in 4 counties with no federal lands, with the exception of a portion of the headwaters of Cedar Swamp Creek flowing out of the Cape May National Wildlife Refuge in Upper Township, Cape May County.

The GREG is managed by a partnership between the 12 municipalities, the Great Egg Harbor Watershed Association, and the National Park Service, through the ongoing implementation of the Great Egg Harbor National Scenic and Recreational River Comprehensive Management Plan.



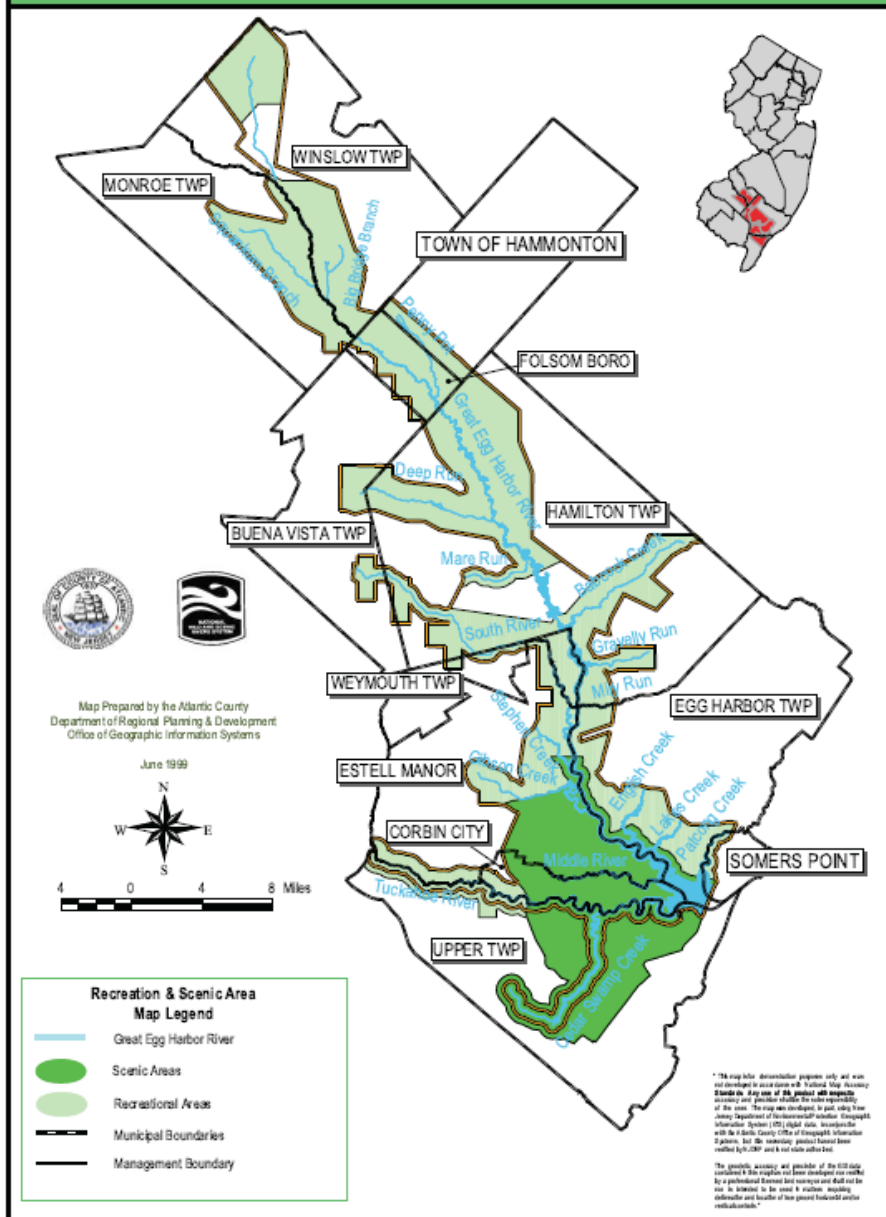
## Financial Metrics

The GREG's operation and management is federally funded by a variable annual appropriation of approximately \$172,000 (FY2017). The total federal cost to manage 129 miles of this linear park with no federal lands prorates to \$1,333 per river mile.

For comparison, the Upper Delaware Scenic & Recreational River (73 miles) and the Middle Delaware NSR (40 miles) under direct federal management are federally funded by a variable annual appropriation of approximately \$3,415,000 (FY2017). The total federal cost to manage 113 miles of these linear parks with some federal lands prorates to \$30,221 per river mile.

All the recreational infrastructure and service costs on the GREG are paid for by the "political jurisdictions" that own and operate them, and there is no federal maintenance backlog on the GREG.

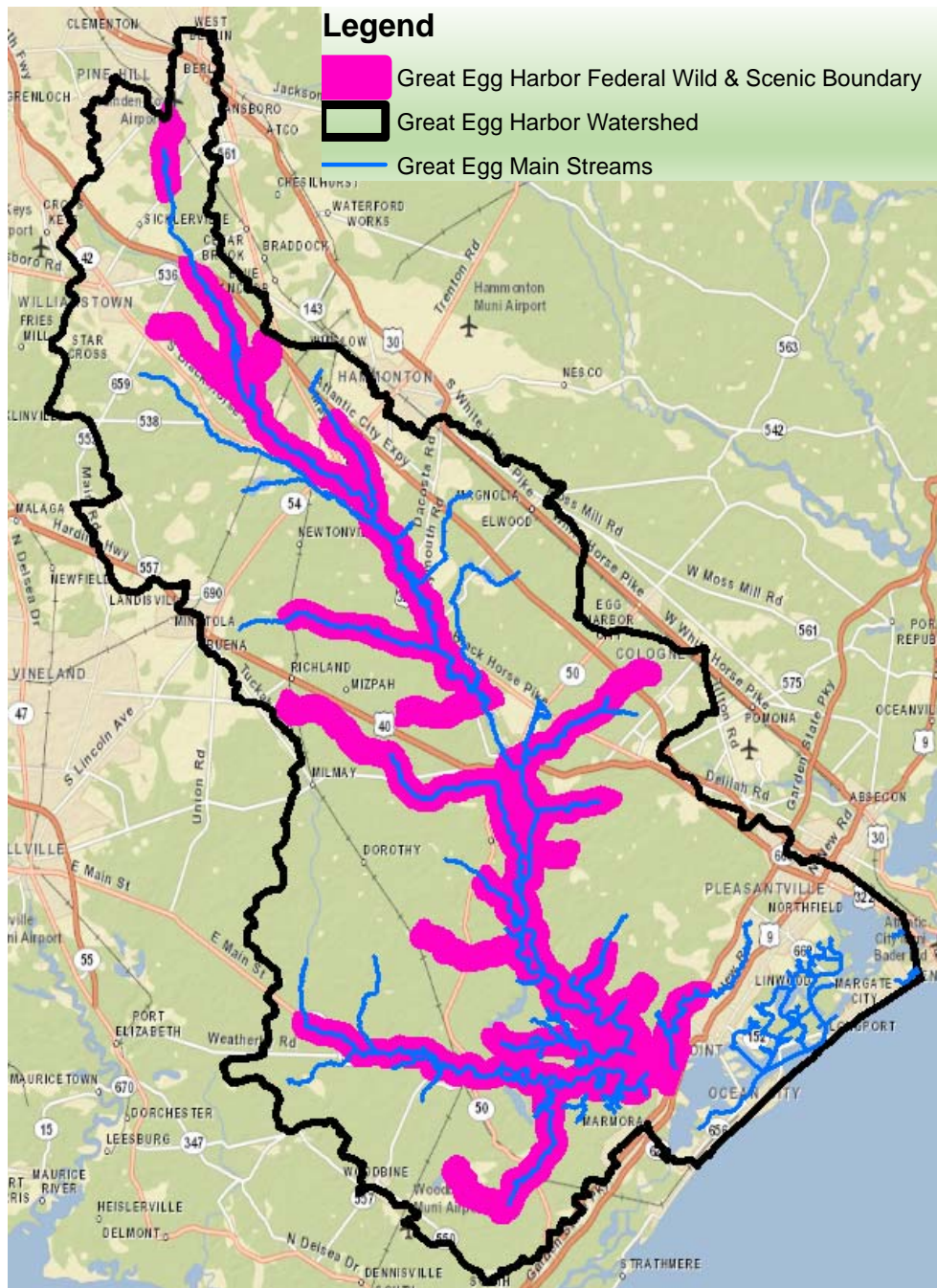
## Great Egg Harbor River Recreational and Scenic Areas



## Recreational Metrics

Of the 129 river miles designated by Congress, 98.4 miles are designated as “Recreational”, and 30.6 miles are designated as “Scenic”. So the designation itself is a recognition and tribute to the Outstanding Recreational Resource Values of the Great Egg Harbor National Scenic and Recreational River.

However, the Great Egg Harbor River was recognized as a heavily used resource early on, and the public felt that recreational overcrowding was occurring and that there were carrying capacity issues. In 1998 the National Park Service contracted with Virginia Polytech to undertake a Social Science Study of the recreational uses of the river to guide recommendations in the Comprehensive Management Plan, which included limiting additional public access sites and controlling motorized recreation wake and emerging personal watercraft.

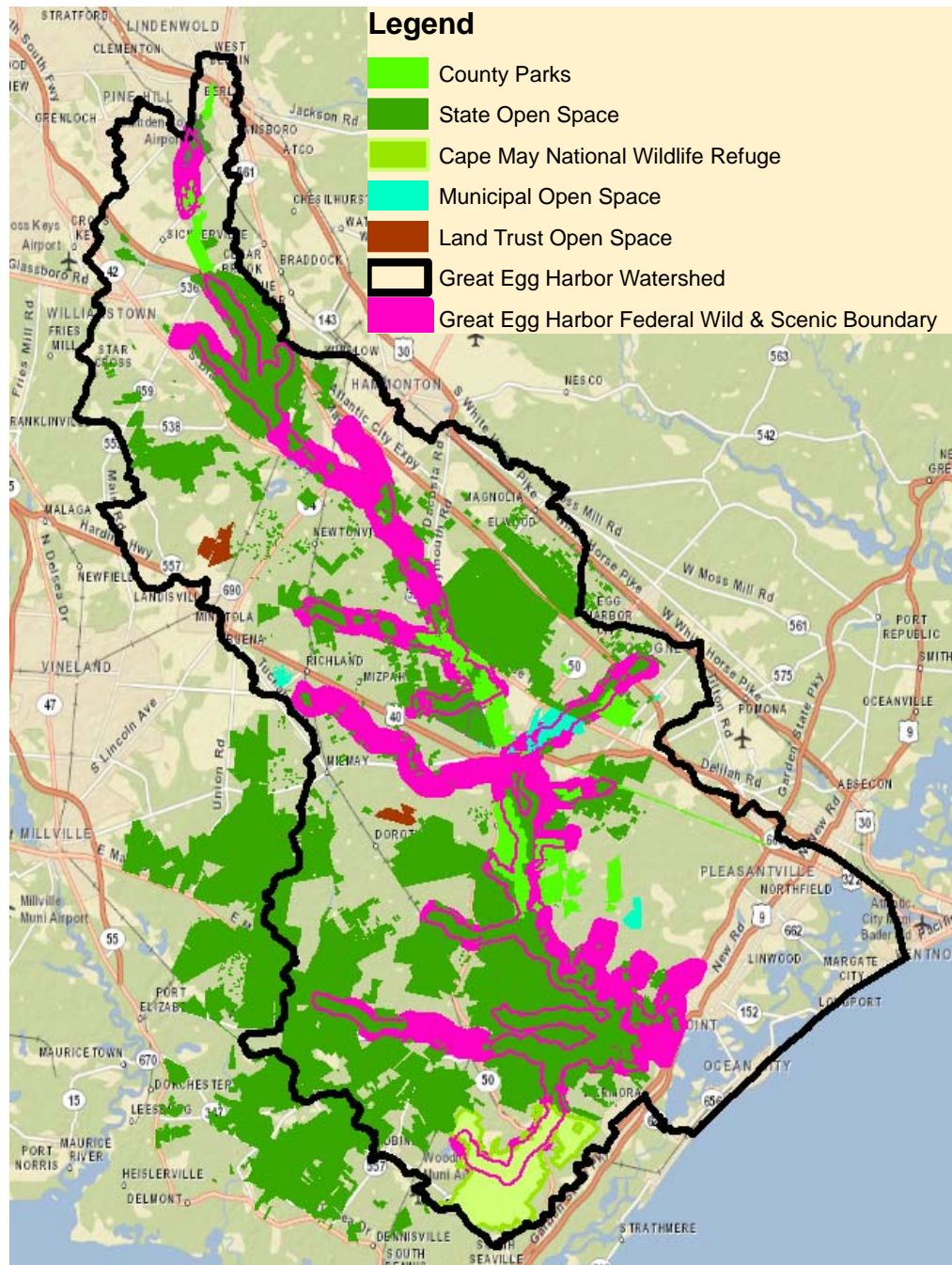


## GREG Recreation Inventory

**Recreation lands and opportunities abound on the GREG. A watershed approach is used to document the recreation inventory starting at the top of the watershed and going down river.**

**Recreation lands on and around the GREG are publicly owned and maintained by Municipalities, Counties, the State of New Jersey, Non-governmental Organizations, and for profit Liveries and Marinas.**

**All the services and costs for these recreation lands are provided by the local owners, including purchase, development, maintenance, emergency management, and search and rescue.**



## Recreation Lands on the Great Egg Harbor National Scenic and Recreational River and National Park

**As of 2018, there are over 127,000 acres of recreational land on and around the GREG:**

<b>County Parks</b>	<b>= 7,847 acres</b>
<b>State Open Space</b>	<b>= 116,018 acres</b>
<b>Federal NWR</b>	<b>= 687 acres</b>
<b>Municipal</b>	<b>= 1,383 acres</b>
<b>Not-For-Profit</b>	<b>= 1,104 acres</b>

**While the GREG is a linear National Park, all these recreation lands provide vast public recreational opportunities for local residents and regional visitors to the GREG.**

## Camden County Berlin Park

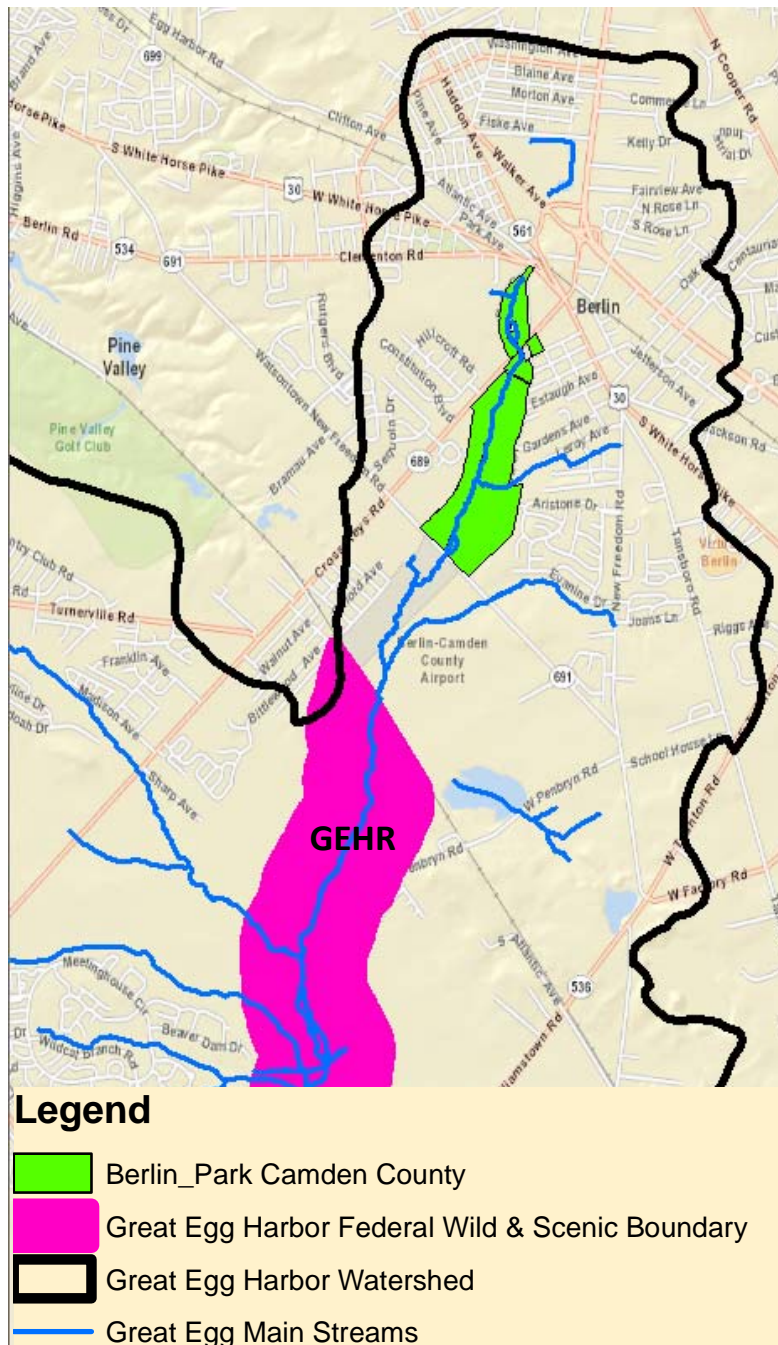
Berlin Park is a 152 acre park in the headwaters of the Great Egg Harbor River created in the 1930's.

While it was too developed to be eligible for designation and not in the federal boundary, it serves as a high intensity, highly accessible river recreation amenity near the GREG to take the recreational pressure in a highly urbanized area.

### Facilities at the Berlin Park include:

- Nature Trails – approximately 5 miles gravel and dirt
- 2 Tennis Courts
- 1 Bike Path paved .78 mile, cinder/gravel 1.8 miles
- 1 Basketball Court
- 2 Playgrounds
- 2 Softball Fields
- 1 Sand Volleyball Court
- 3 Picnic Groves
- 1 In-Line Hockey Court
- Fishing – in the Great Egg Harbor River

<http://www.camdencounty.com/service/parks/berlin-park/>



## Penbyrn Pond Wildlife Management Area(WMA)

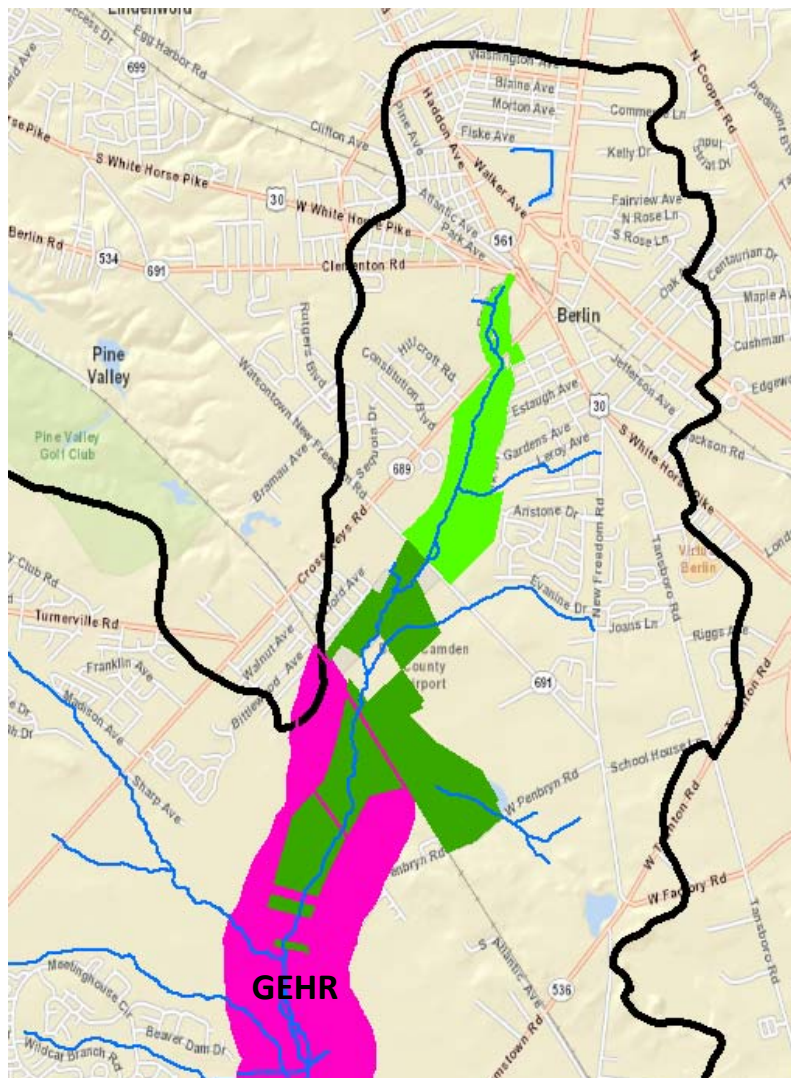
New Jersey Department of Environmental Protection's (NJDEP) 355 acre Penbyrn Pond WMA provides natural lands buffering in the upper GREG and provides passive types of recreation.

Hunting and fishing are the two activities most associated with WMAs, but they are also prime locations for fishing, hiking, birding, wildlife viewing and photography, cross country skiing, and mountain biking.





WMAs also provide significant ecosystem services for water quality and habitat. Penbyrn Pond is a newer WMA that is growing.

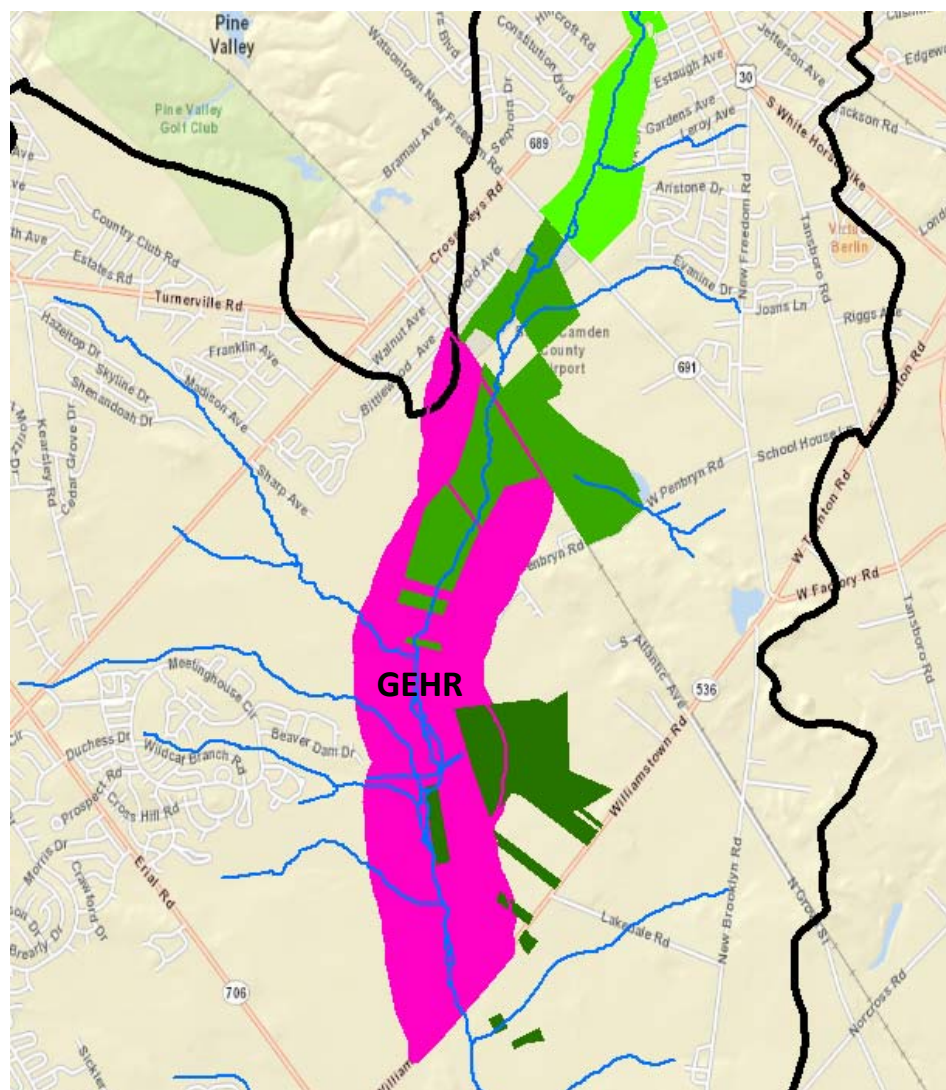
[https://www.nj.gov/dep/fgw/pdf/wmamaps/penbryn\\_pond.pdf](https://www.nj.gov/dep/fgw/pdf/wmamaps/penbryn_pond.pdf)

[https://www.njfishandwildlife.com/pdf/wmaroadmaps/penbryn\\_pond\\_rd.pdf](https://www.njfishandwildlife.com/pdf/wmaroadmaps/penbryn_pond_rd.pdf)



### Legend

-  PenbyrnPond\_WMA
-  Berlin\_Park Camden County
-  Great Egg Harbor Watershed
-  Great Egg Harbor Federal Wild & Scenic Boundary



## Legend

- NLT Long-A-Coming\_Preserve
- PenbyrnPond\_WMA
- Great Egg Harbor Federal Wild & Scenic Boundary

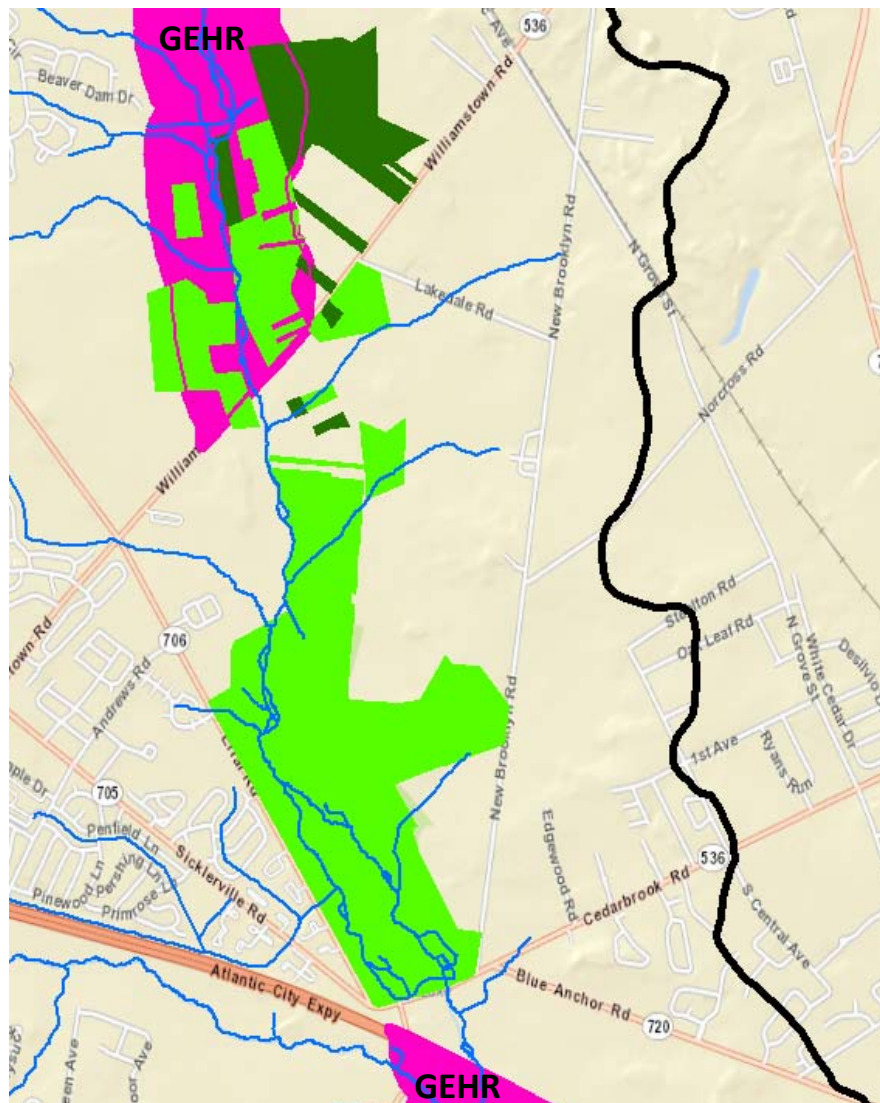
## NLT Long-A-Coming Preserve

New Jersey Natural Lands Trust's 170 acre and growing Long-A-Coming Preserve is an assembly of properties that have been donated by private citizens, the New Jersey Conservation Foundation, or have been purchased through funding by the State Green Acres Program.

While mainly preserved as natural lands for ecosystem services, NLT does promote recreational deer hunting to reduce plant herbivory in their preserves.

[https://nj.gov/dep/njnlt/maps/long\\_a\\_coming.pdf](https://nj.gov/dep/njnlt/maps/long_a_coming.pdf)

<https://nj.gov/dep/njnlt/longacoming.htm>



## Legend

- New Brooklyn Park
- NLT Long-A-Coming\_Preserve
- Great Egg Harbor Federal Wild & Scenic Boundary

## New Brooklyn Park Camden County

New Brooklyn Park is a 758 acre river park in Camden County created in the 30's. It was not eligible for WSR designation because of the dam that creates the lake, but natural areas within the federal boundary upstream were added later.

Like Berlin Park, it serves as a high intensity, highly accessible river recreation amenity near the GREG that receives active, river related recreational pressure in a highly populated area.

Facilities at the New Brooklyn Park include:

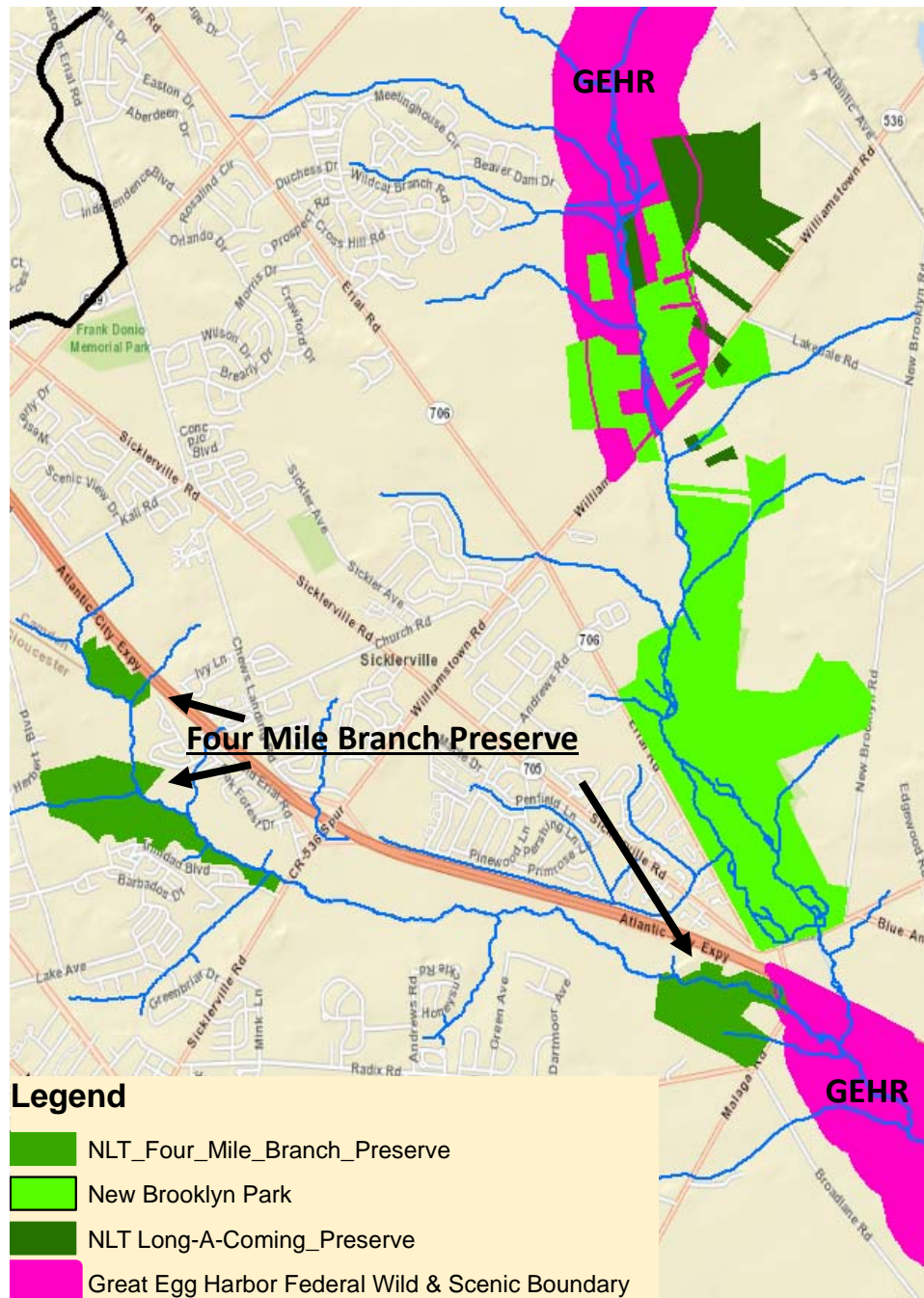
- Disc Golf Course, 1 Canoe Launch
- 2 Tennis Courts, 1 Sand Volley Ball Court
- 1 Softball Field, Bike Path – 1.22 miles
- 1 Outdoor Amphitheater
- 1 Pavilion with 3 tables, 2 Playgrounds
- 1 In-Line Hockey Court
- Hiking – unmarked trails and dirt roads
- Fishing – Great Egg Harbor River & Lake

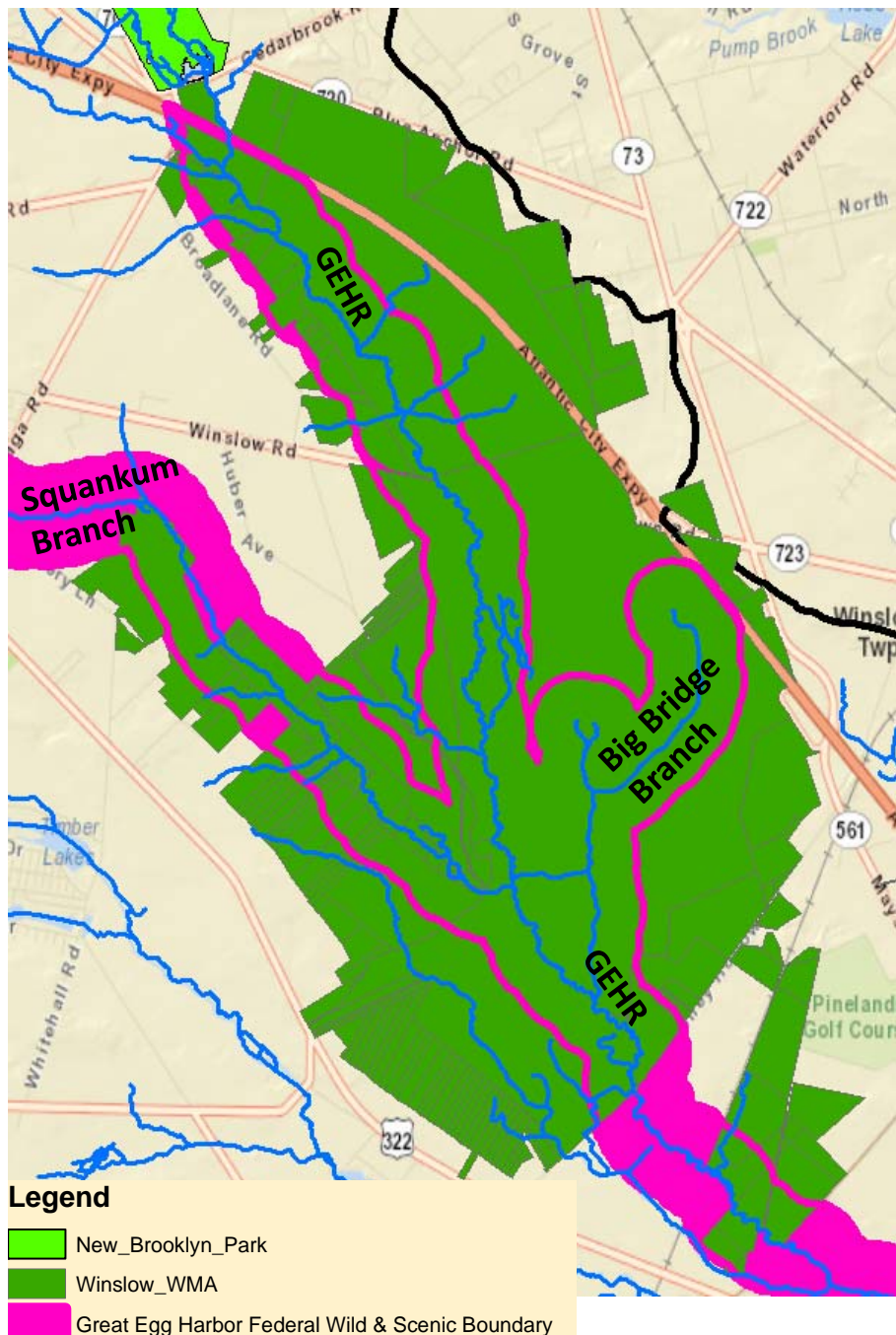
## NLT Four Mile Branch Preserve

New Jersey Natural Lands Trust's 250 acre Four Mile Branch Preserve protects an urban tributary that drains into the GREG.

While mainly preserved as natural lands for ecosystem services, NLT does allow public access to this preserve for hiking, fishing, and birdwatching.

[https://nj.gov/dep/njnl/maps/four\\_mile\\_branch.pdf](https://nj.gov/dep/njnl/maps/four_mile_branch.pdf)





## Winslow WMA, 8,332 acres

This sprawling NJDEP WMA directly overlays the GREG main stem, Big Bridge Branch, and Squankum Branch.

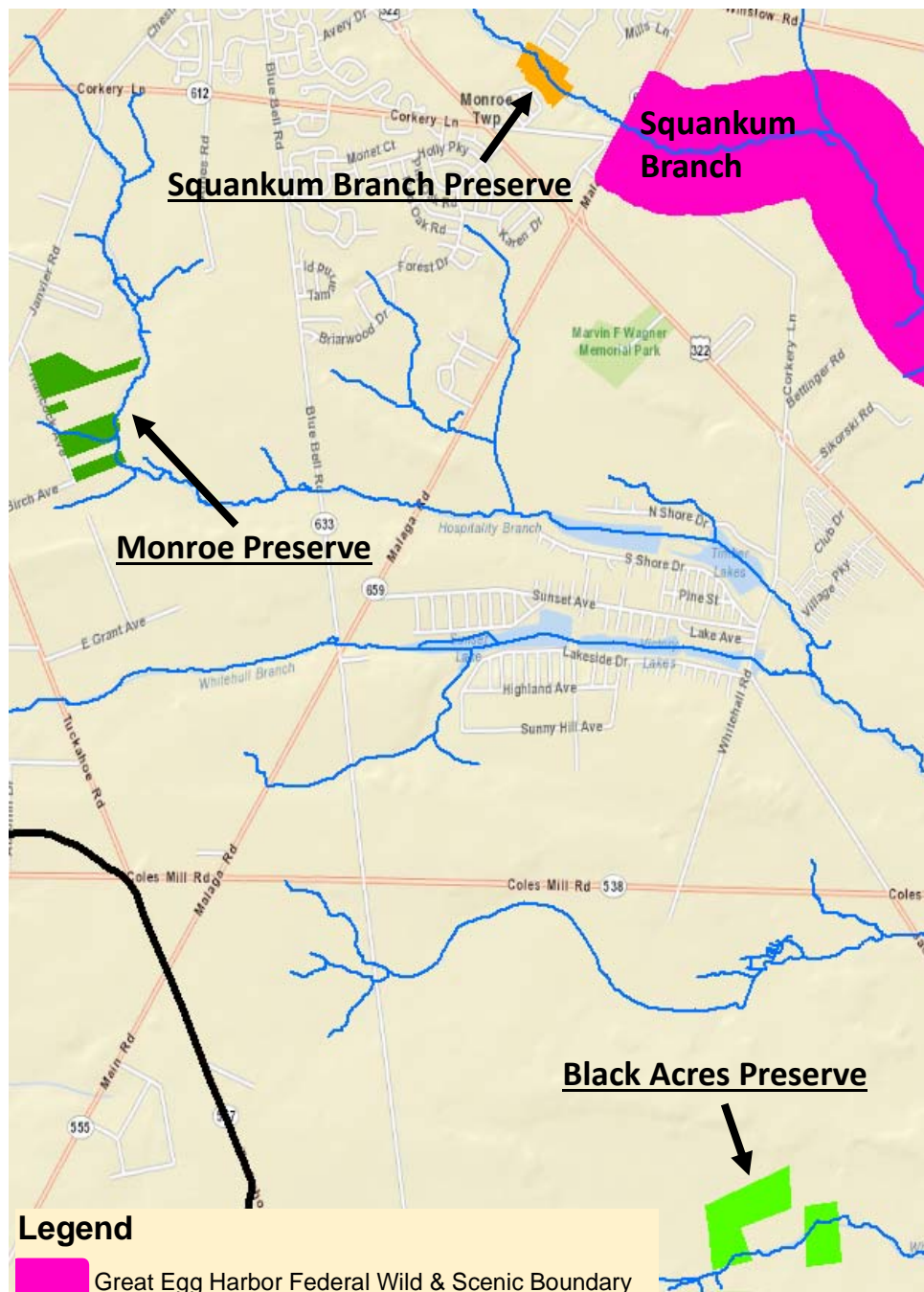
In addition to improving water quality and mitigating flooding from up river urban areas, Winslow WMA offers abundant recreational opportunities for many thousands of people.

Facilities include an office, archery range, parking, and over 26 miles of roads and trails.

Recreation opportunities include hunting, fishing, birding, wildlife viewing and photography, cross country skiing, hiking and mountain biking.

<https://www.njfishandwildlife.com/pdf/wmamaps/winslow.pdf>

[https://www.state.nj.us/dep/fgw/pdf/wmamaps/winslow\\_range.pdf](https://www.state.nj.us/dep/fgw/pdf/wmamaps/winslow_range.pdf)



## NJ Natural Lands Trust Preserves

**Squankum Branch Preserve** – 23 acres on both sides of Squankum Branch. Open for hiking, fishing, nature study, bird watching.

[https://nj.gov/dep/njnl/maps/squankum\\_branch.pdf](https://nj.gov/dep/njnl/maps/squankum_branch.pdf)

**Monroe Preserve** – 56 acres on Hospitality Branch, a tributary of the GREG. Open for hiking, fishing, nature study, bird watching.

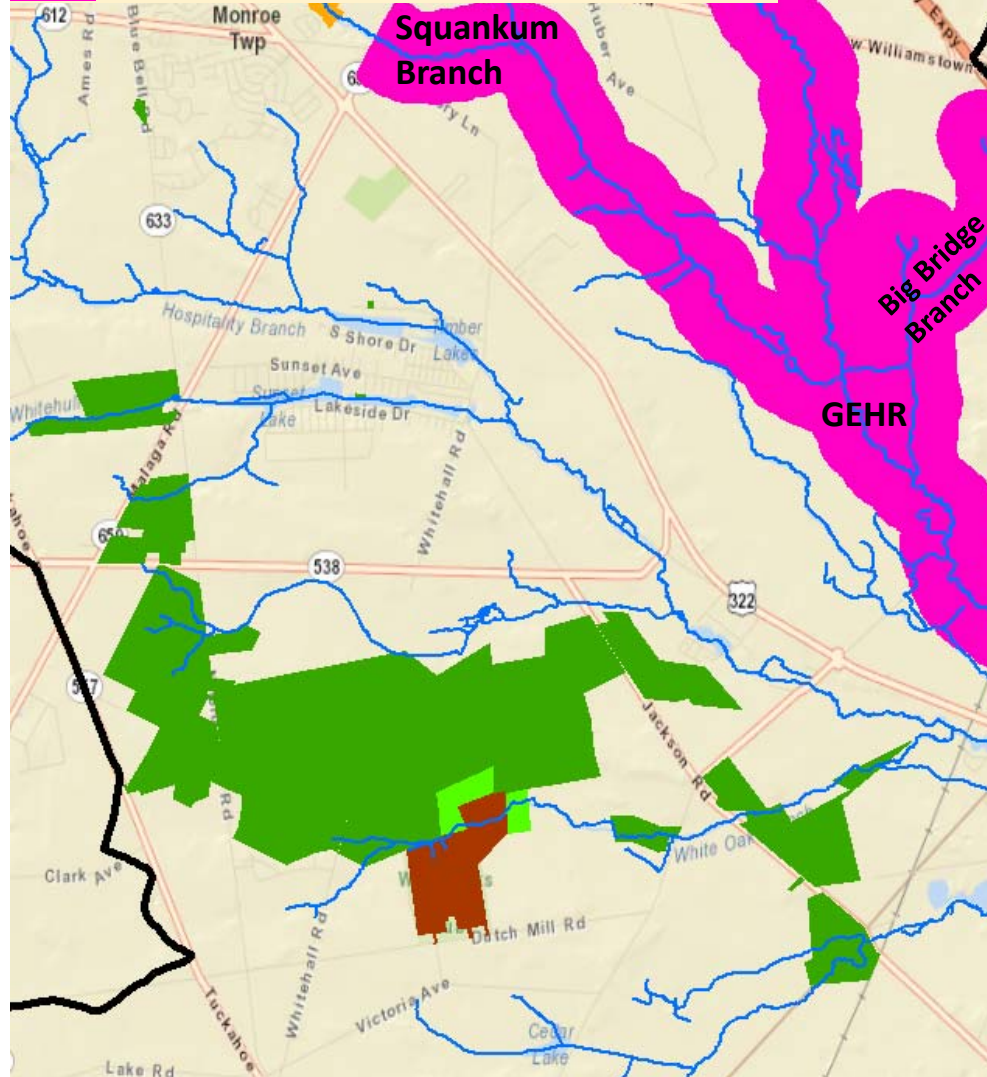
<https://nj.gov/dep/njnl/maps/monroe.pdf>

**Black Acres Preserve** – 78 acres of forested lands adjacent to the White Oak Branch WMA. Hiking, nature study, bird watching, hunting

<https://nj.gov/dep/njnl/blackacres.htm>  
[https://nj.gov/dep/njnl/maps/black\\_acres.pdf](https://nj.gov/dep/njnl/maps/black_acres.pdf)

## Legend

- White Oak Branch WMA
- White Oaks Golf Course
- NLT Black Acres Preserve
- Great Egg Harbor Federal Wild & Scenic Boundary



## White Oak Branch WMA, 2,705 acres

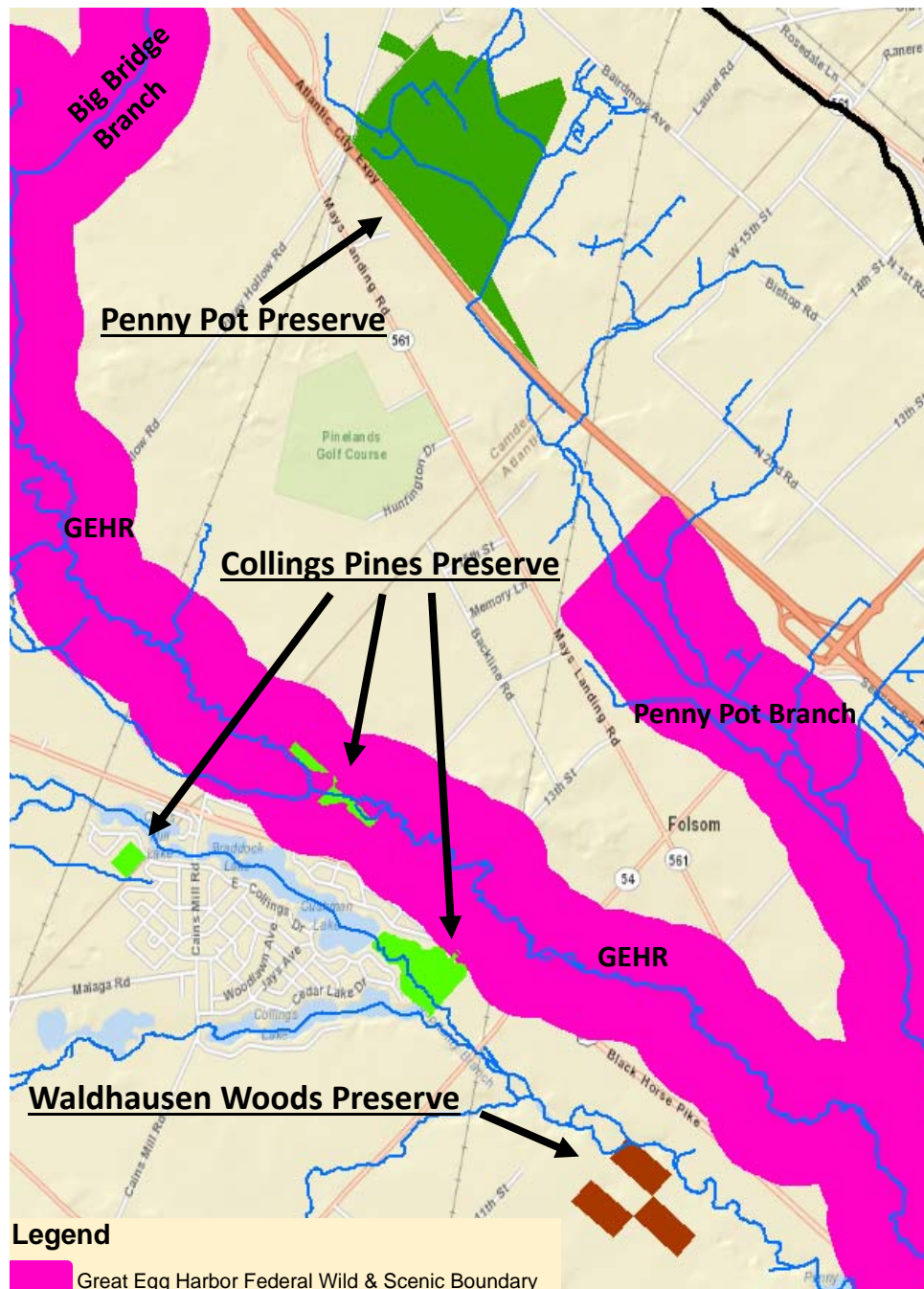
This sprawling NJDEP WMA protects the headwaters of White Oak Branch, Faraway Branch, and White Hall Branch, all tributaries of Hospitality Branch, which drains into the GREG. Hunting, hiking, birding, nature study, and wildlife viewing are available here.

The 212 acre state owned White Oak Golf Course is connected to the WMA, but is privately operated.

The 78 acre NLT Black Acres Preserve is also connected to this WMA.

[https://www.nj.gov/dep/fgw/pdf/wm\\_amaps/white\\_oak\\_branch.pdf](https://www.nj.gov/dep/fgw/pdf/wm_amaps/white_oak_branch.pdf)

[https://www.state.nj.us/dep/fgw/pdf/wmaroadmaps/white\\_oak\\_branch\\_rd.pdf](https://www.state.nj.us/dep/fgw/pdf/wmaroadmaps/white_oak_branch_rd.pdf)



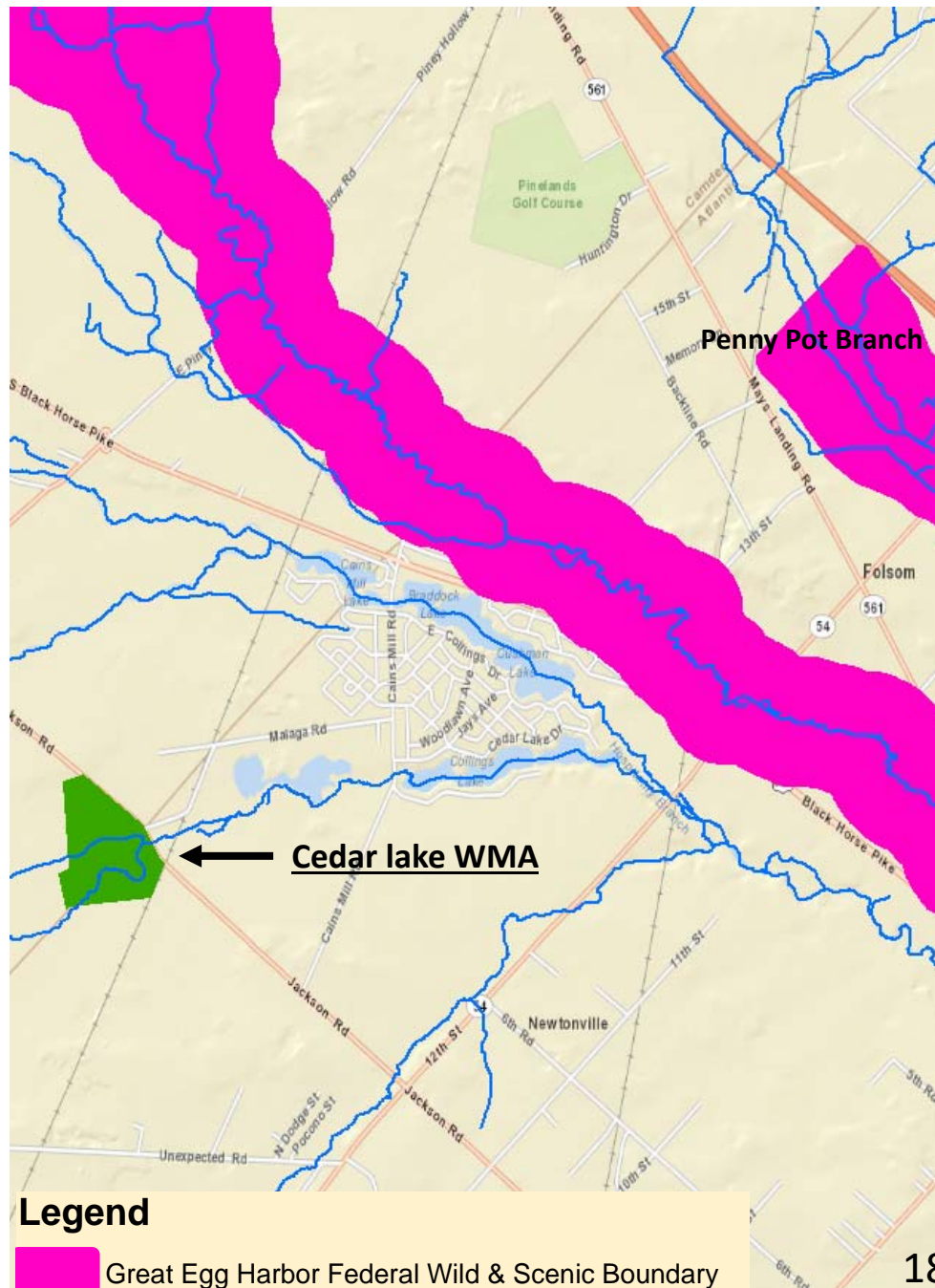
### Cedar lake WMA, 116 acres

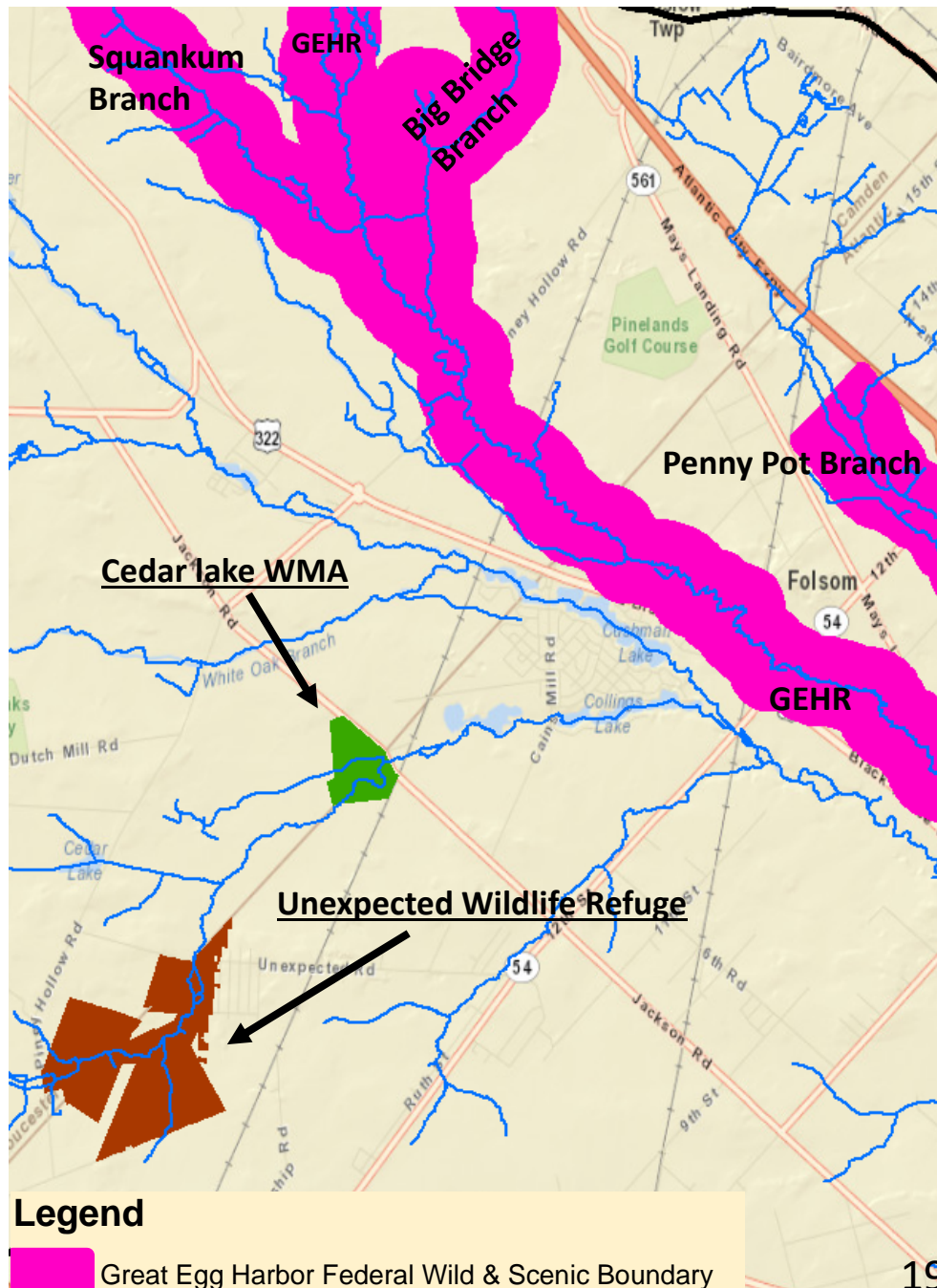
Cedar Lake is a beautiful natural lake surrounded by mixed forest and swamp areas that protects Marsh Lake Branch, a tributary of Hospitality Branch. Aquatic vegetation in the lake supports a healthy community of turtles, fish, amphibians, and insects. A few sandy trails traverse the classic Pine Barrens woods and offer several vantage points around the lake. This is an excellent place to explore by canoe or kayak.

Cedar Lake WMA is a destination on the New Jersey Birding and Wildlife Trails System, and offers fishing, hunting, boating, and wildlife viewing.

[https://www.nj.gov/dep/fgw/pdf/wm\\_amaps/cedar\\_lake.pdf](https://www.nj.gov/dep/fgw/pdf/wm_amaps/cedar_lake.pdf)

<https://njudubon.org/wp-content/wildlife/PineBarrensTrails/Sites/tabid/1698/Scope/site/Guide/PINEBARREN/Site/377/Default.html>





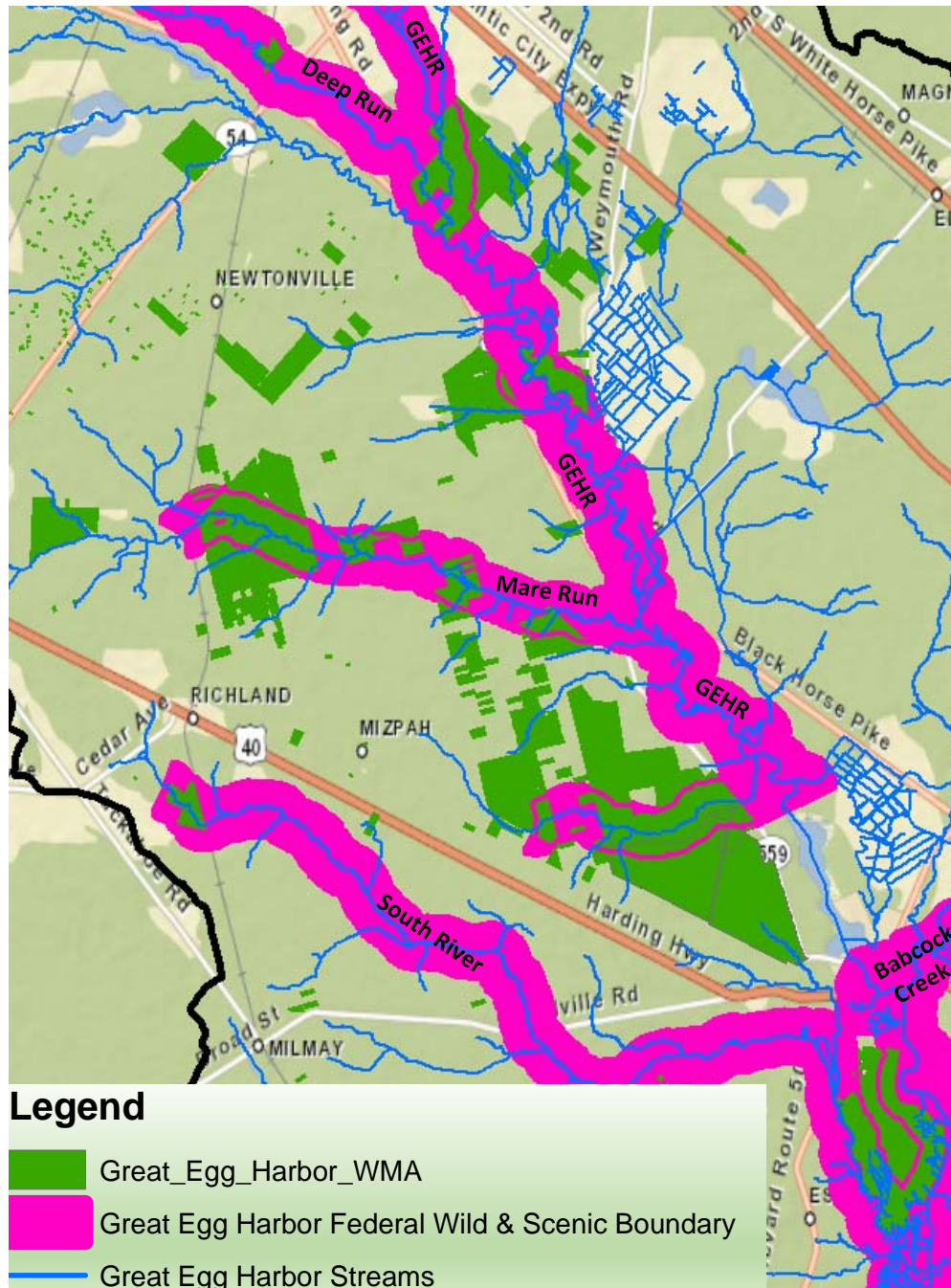
## Unexpected Wildlife Refuge, 767 acres

Unexpected Wildlife Refuge is a protected natural habitat comprising 767 acres of pristine pine lands, forest, fields and bogs on the headwaters of Marsh Lake Branch. It provides a refuge to animals and plants indigenous to southern New Jersey.

Unexpected Wildlife Refuge is owned and operated by a not-for-profit land trust. Wildlife viewing and hiking are the only recreational activities permitted, visitation by appointment.

<http://www.unexpectedwildliferefuge.org/>

[http://unexpectedwildliferefuge.org/uwr\\_public/uwr\\_visitor\\_information.php](http://unexpectedwildliferefuge.org/uwr_public/uwr_visitor_information.php)



## Great Egg Harbor WMA, 8,012 acres

This sprawling NJDEP WMA directly overlays the GREG main stem, Penny Pot Branch, Deep Run, Mare Run, and South River.

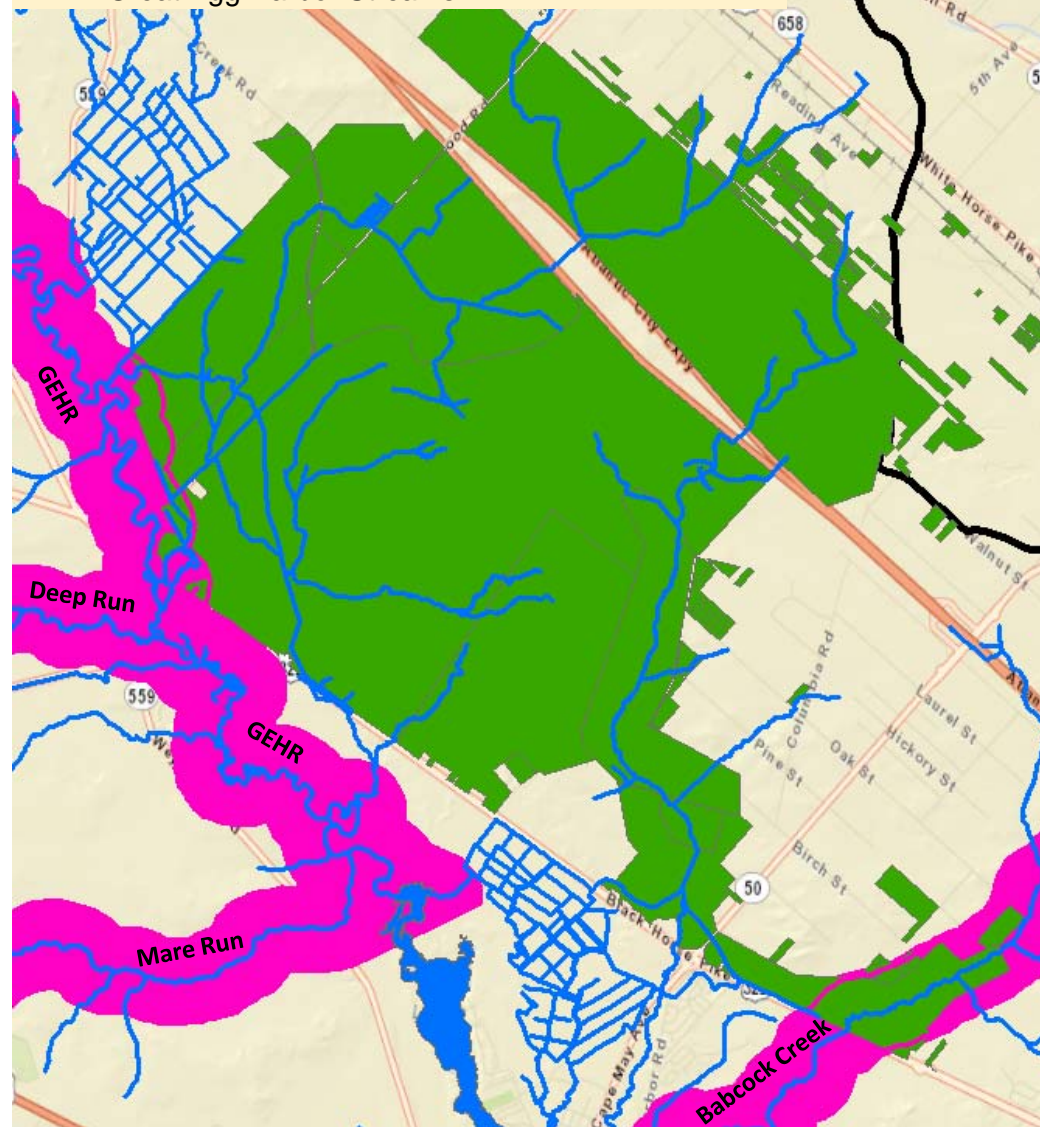
Widely spread out and rapidly expanding, this mid-watershed WMA offers abundant recreation for many thousands of people.

It also requires 6 section maps named for the political jurisdictions in Buena Vista, Folsom, Hamilton and Weymouth Townships.

Recreation opportunities include canoeing, hunting, fishing, birding, wildlife viewing and photography, cross country skiing, hiking, mountain biking, motor boating, and set skiing in the tidal waters at South River.

## Legend

- Makepeace\_Lake\_WMA
- Great Egg Harbor Federal Wild & Scenic Boundary
- Great Egg Harbor Streams



## Makepeace Lake WMA, 11,727 acres

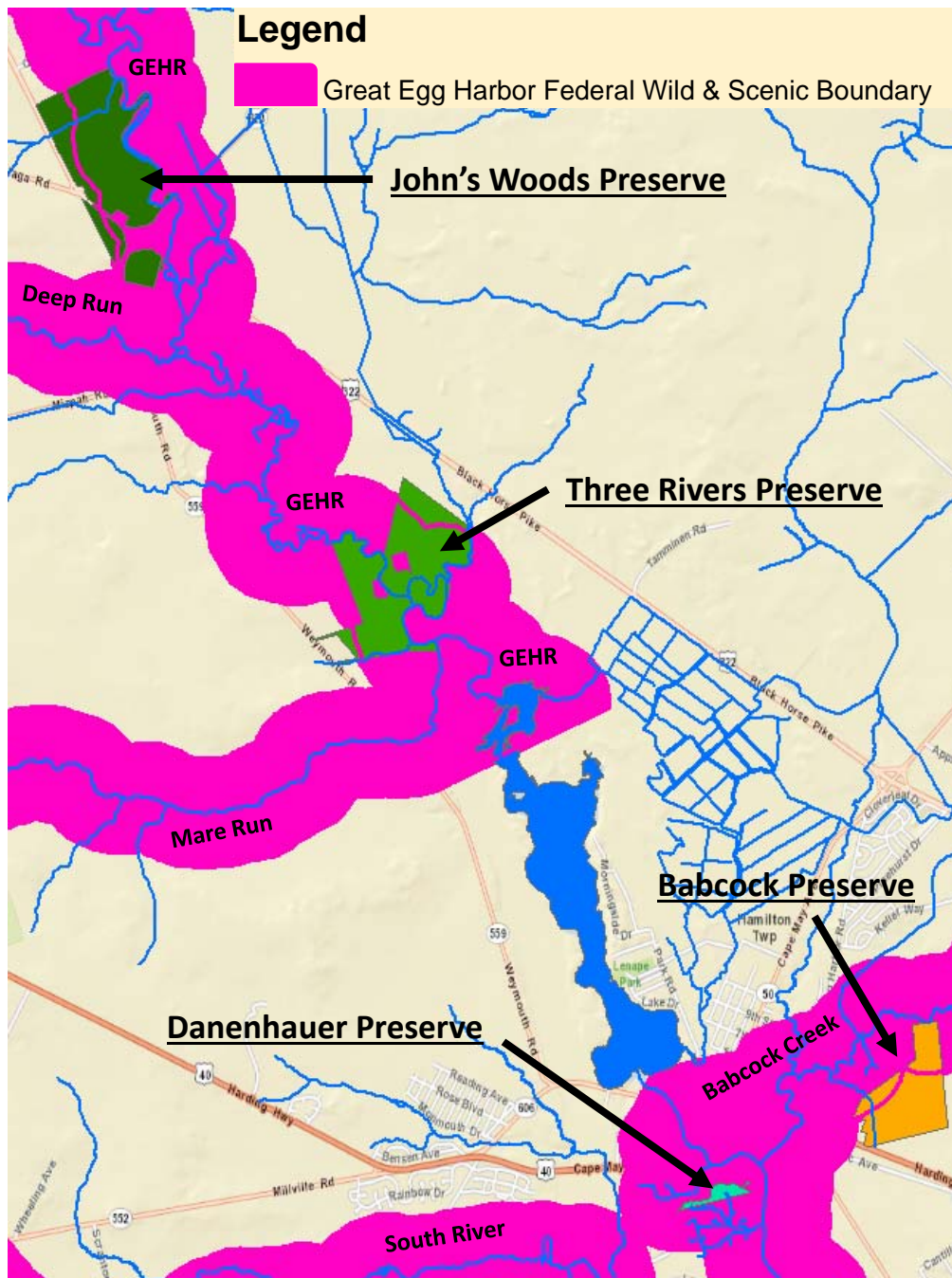
**This sprawling NJDEP WMA touches the north edge of the GREG boundary, and overlays Babcock Creek.**

**Encompassing the tributary headwaters of Makepeace Stream, Big Ditch, and Watering Race Branch, this WMA contributes significant flows to the GREG.**

**This mid-watershed WMA offers abundant recreation for many thousands of people.**

**Recreation opportunities include hunting, fishing, birding, wildlife viewing and photography, cross country skiing, hiking, and mountain biking.**

**[https://www.njfishandwildlife.com/pdf/wmamaps/makepeace\\_lake.pdf](https://www.njfishandwildlife.com/pdf/wmamaps/makepeace_lake.pdf)**



## NJ Natural Lands Trust Preserves

**John's Woods Preserve** – 202 acres of historically significant lands with visual access to the river. Hiking, fishing, nature study, bird watching, and permit bow hunting.

<https://nj.gov/dep/njnl/johnswoods.htm>

**Three Rivers Preserve** – 211 acres on both sides of the GREG, and Miry Run and Big Ditch. No public access, water trail through canoeing only.

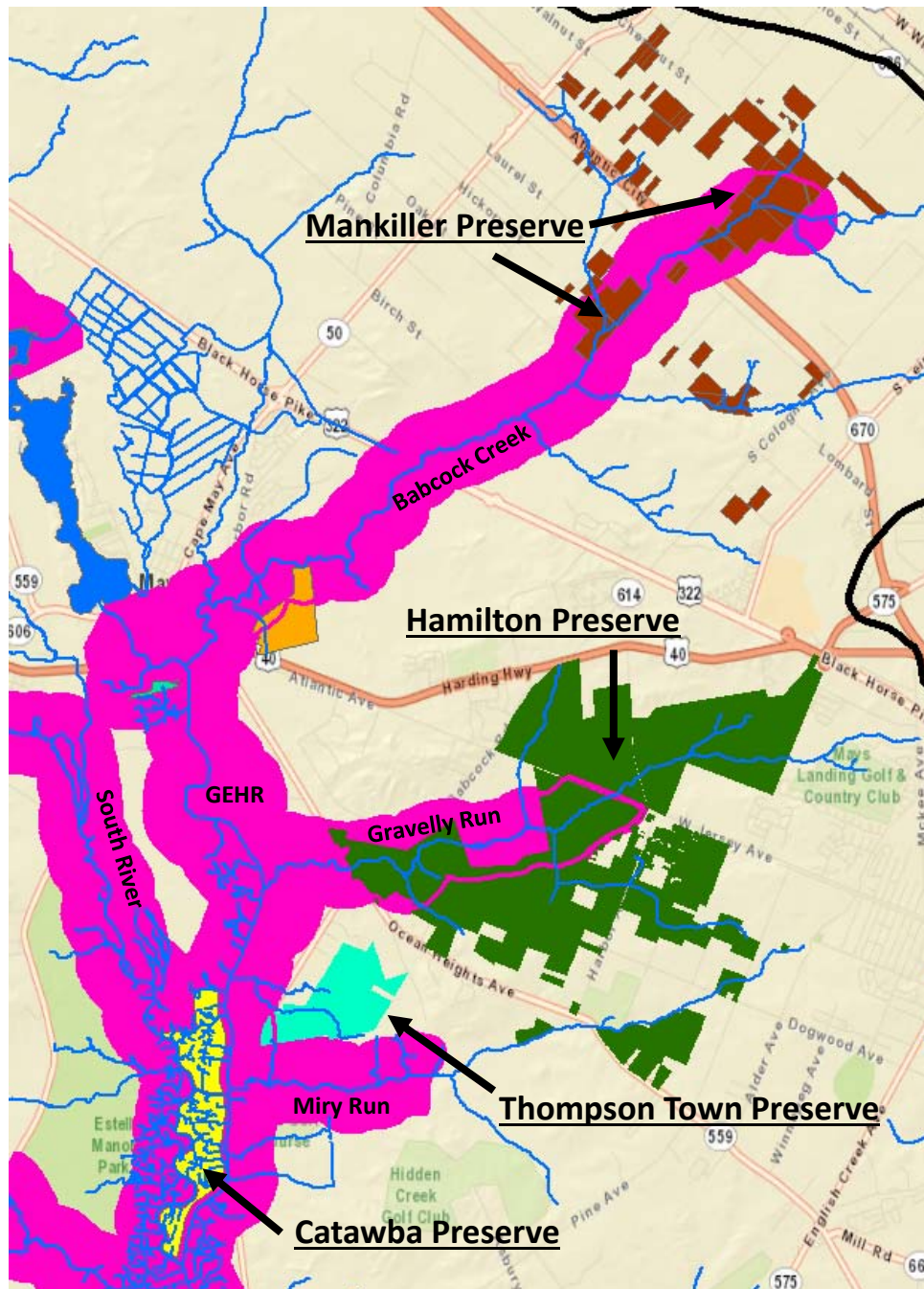
[https://nj.gov/dep/njnl/maps/three\\_rivers.pdf](https://nj.gov/dep/njnl/maps/three_rivers.pdf)

**Babcock Preserve** – 94 acres of forested lands for passive recreation. Hiking, nature study, bird watching, hunting.

<https://nj.gov/dep/njnl/babcockcreek.htm>

**Danenhauer Preserve** – 9 acres of urban tidal wetlands along road that offers views of tidal wetlands.

<https://nj.gov/dep/njnl/maps/danenhauer.pdf>



## NJ Natural Lands Trust Preserves

Mankiller Preserve – 752 acre project to protect natural resources in the headwaters of Babcock Creek. Hiking, fishing, nature study, bird watching.

<https://nj.gov/dep/njnlt/maps/mankiller.pdf>

Hamilton Preserve – 2,330 acres in the headwaters of Gravelly Run with rare plants and ponds. Hiking, fishing, nature study, bird watching, hunting.

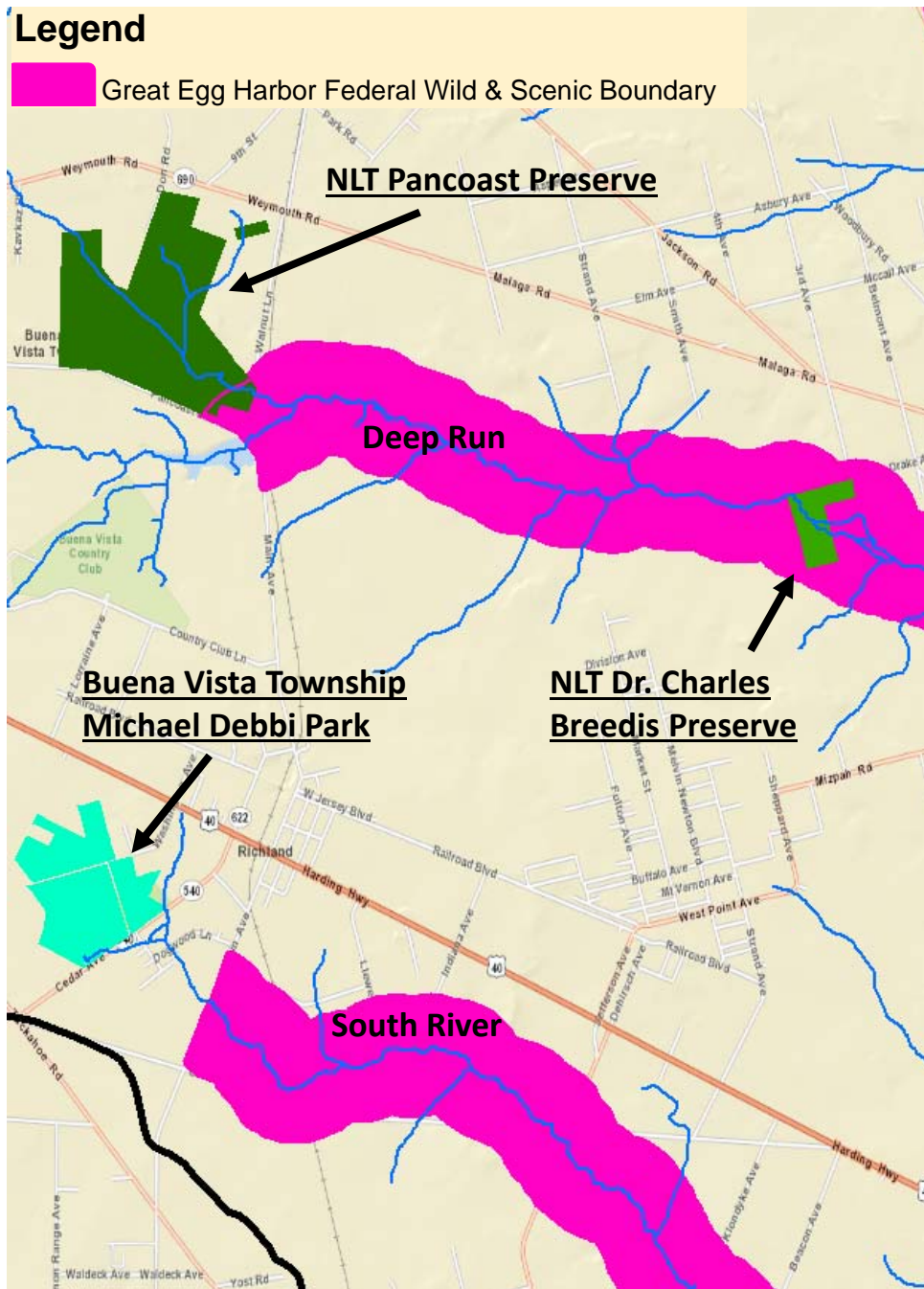
<https://nj.gov/dep/njnlt/hamilton.htm>

Thompson Town Preserve – 232 acres of forest and forested wetlands. Hiking, fishing, nature study, bird watching, hunting.

<https://nj.gov/dep/njnlt/thompstontown.htm>

Catawba Preserve – 269 acres of freshwater tidal wetlands. Fishing, boating.

<https://nj.gov/dep/njnlt/catawba.htm>



## NJ State and Municipal Lands

**NLT Pancoast Preserve** – 417 acres in the headwaters of Deep Run. Hiking, fishing, hunting, nature study.

<https://nj.gov/dep/njnltpancoast.htm>

<https://nj.gov/dep/njnltpancoast.pdf>

**NLT Dr. Charles Breedis Preserve** – 46 acres along Deep Run. Hiking, fishing, nature study, bird watching.

[https://nj.gov/dep/njnltpancoast/dr\\_charles\\_breedis.pdf](https://nj.gov/dep/njnltpancoast/dr_charles_breedis.pdf)

**Buena Vista Township Michael Debbi Park** – 212 acres in the headwaters of the South River. This Municipal Park is a destination on the New Jersey Birding and Wildlife Trails System for its wildlife viewing and has a street hockey rink, basketball and tennis courts, baseball, softball and football fields, picnic areas, hiking trails, and pavilions.

<https://www.buenavistanj.com/community/parks-and-recreation/>



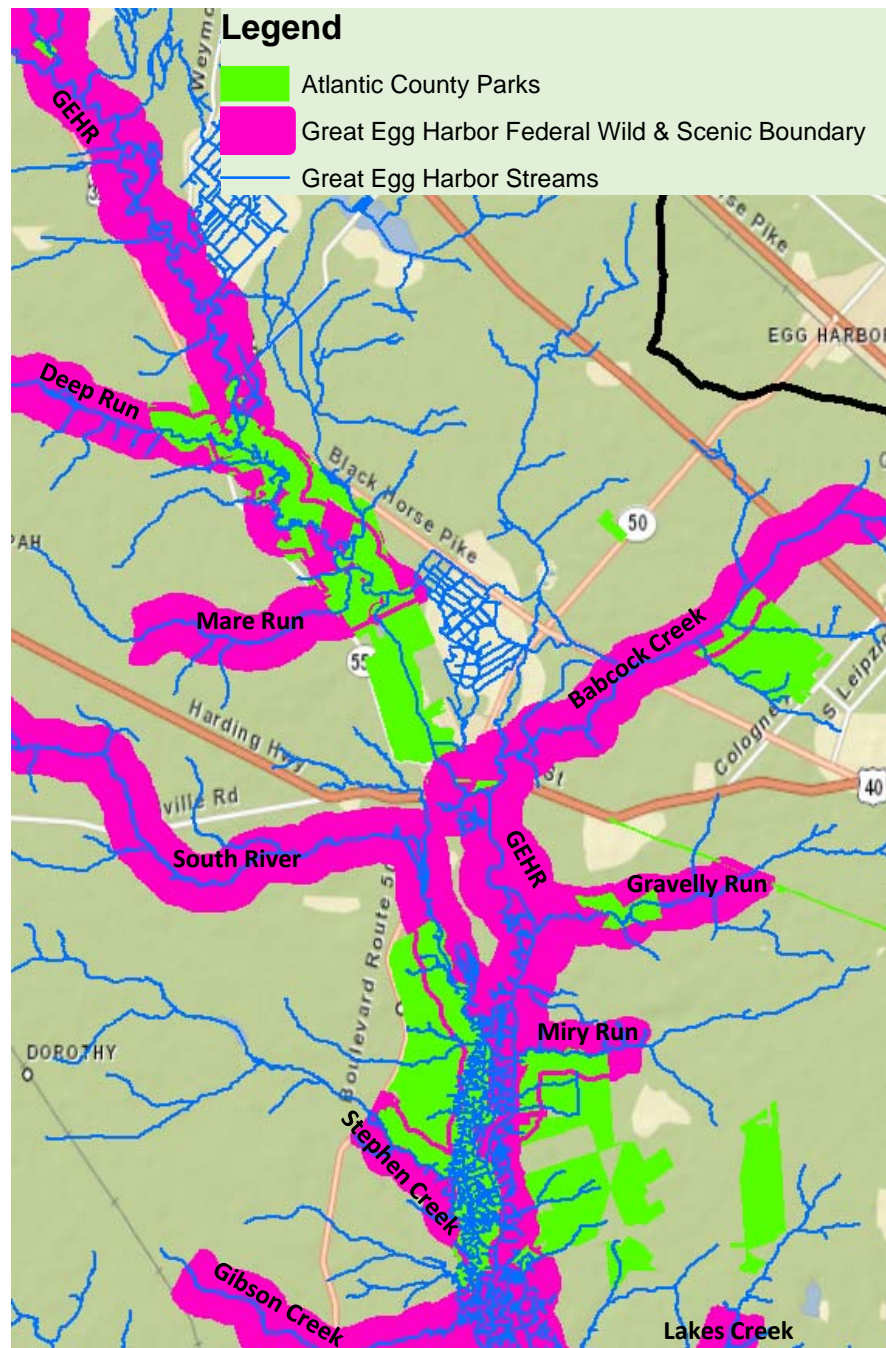
## NJ State and Land Trust Lands

**NLT Bears Head Preserve** – 313 acres scattered around the federal boundary of the South River. Hiking, fishing, nature study.

<https://nj.gov/dep/njlt/maps/bearshead.pdf>

**New Jersey Conservation Foundation Dorothy Preserve** – 337 acres in the headwaters of Stephen Creek, close to the Maple Lake WMA. Owned and operated by NJCF, a not for profit land trust. Hiking, fishing, nature study, bird watching. The Dorothy Preserve is a destination on the New Jersey Birding and Wildlife Trails System for its wildlife viewing.

<https://www.njconservation.org/preserve/dorothy-preserve/>



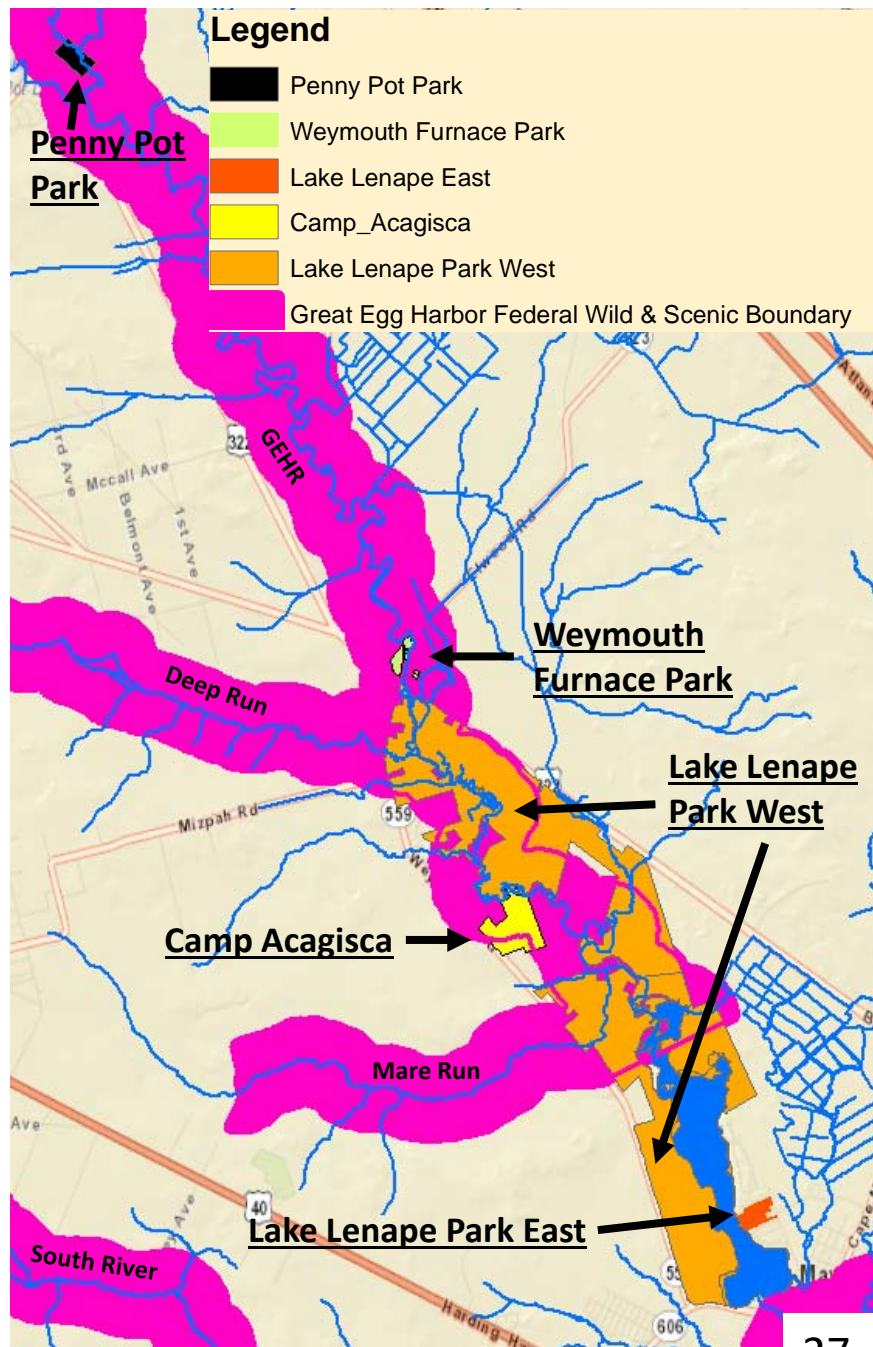
## Atlantic County Parks, 6,937 acres

The Atlantic County Parks System includes 12 Park Units that are on or near the river. Atlantic County was instrumental in helping to study and designate the river, and provided most of the maps that are in the GREG CMP. Since the 1992 designation, the system has been expanded by 3,000 acres.

The Atlantic County Park System rivals National Parks with management staff, Park Rangers, visitor centers, and an extensive offering of amenities and interpretive exhibits. All the Atlantic County Parks are well maintained, protected, and free, without federal funding and federal closures.

The Atlantic County Park System provides ample opportunities for outdoor recreation. A full list of all the recreational opportunities can be found at the Atlantic County Parks and Recreation website:

<http://www.atlantic-county.org/parks/>



## Atlantic County Parks Recreation

**Penny Pot Park** – 20 acre park on the river that provides a canoe/kayak launch and picnic area. Water trail upstream launch.

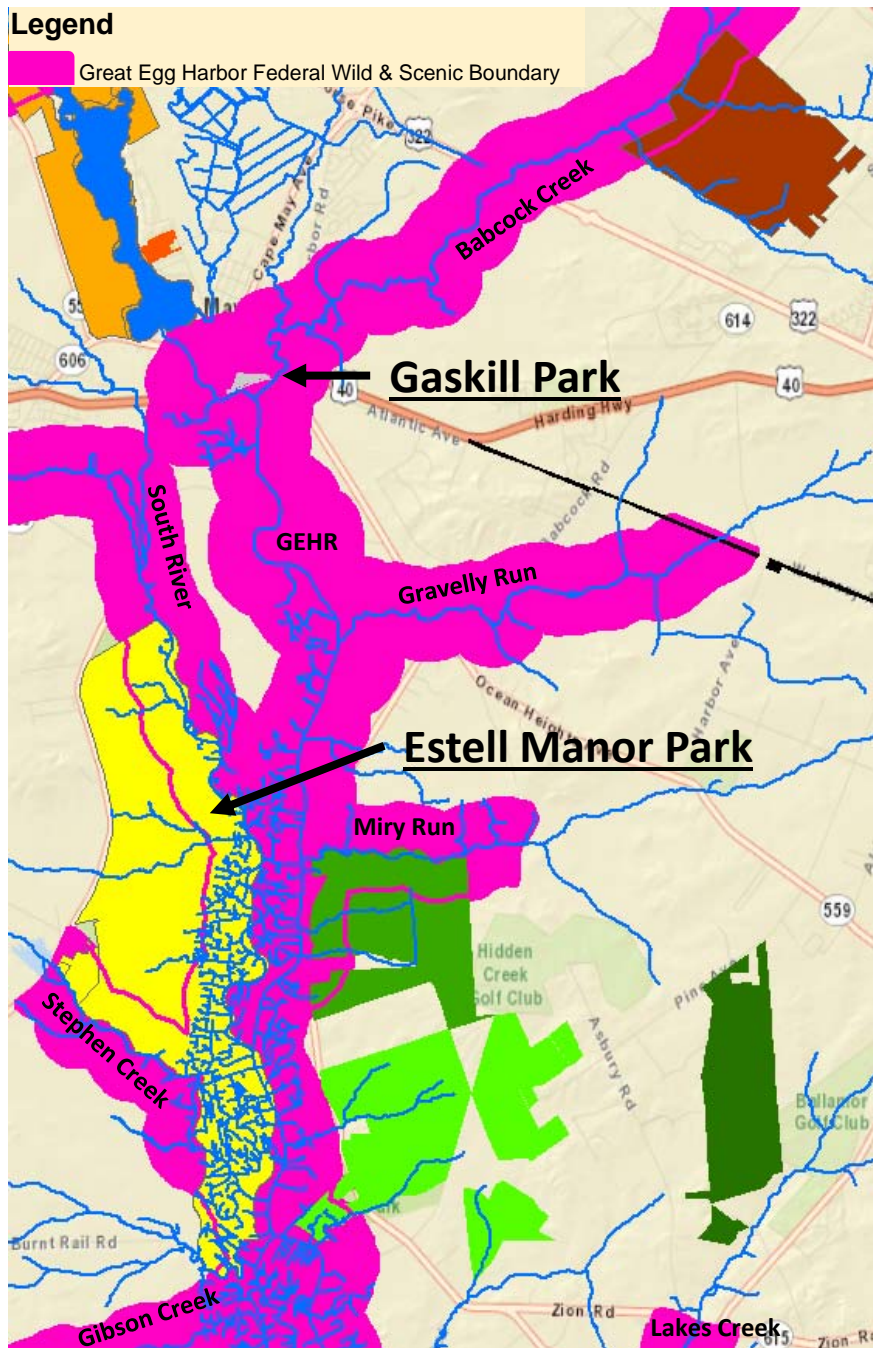
**Weymouth Furnace Park** – 11 acre park on the river that provides a canoe/kayak launch and picnic area, water trail, historic site with signs and ruins, and scenic views of the river.

**Camp Acagisca** – canoe/kayak launch, camp sites, high bank scenic views, water trail.

**Lake Lenape Park West** – 2,000 acres with water trail and lake. Canoe/kayak launch, motor boat ramp, boat house visitor center with rest rooms, 18 camp sites, fishing, hiking, mountain biking, cross country skiing, picnic areas, hunting, in-line skating, playgrounds, nature trails, birding, scenic.

**Lake Lenape Park East** - Fishing, Pavilions, Picnic Tables, Rest Rooms, Softball, Volley Ball, Playground, catering hall, birding.

<http://www.atlantic-county.org/parks/lake-lenape.asp>

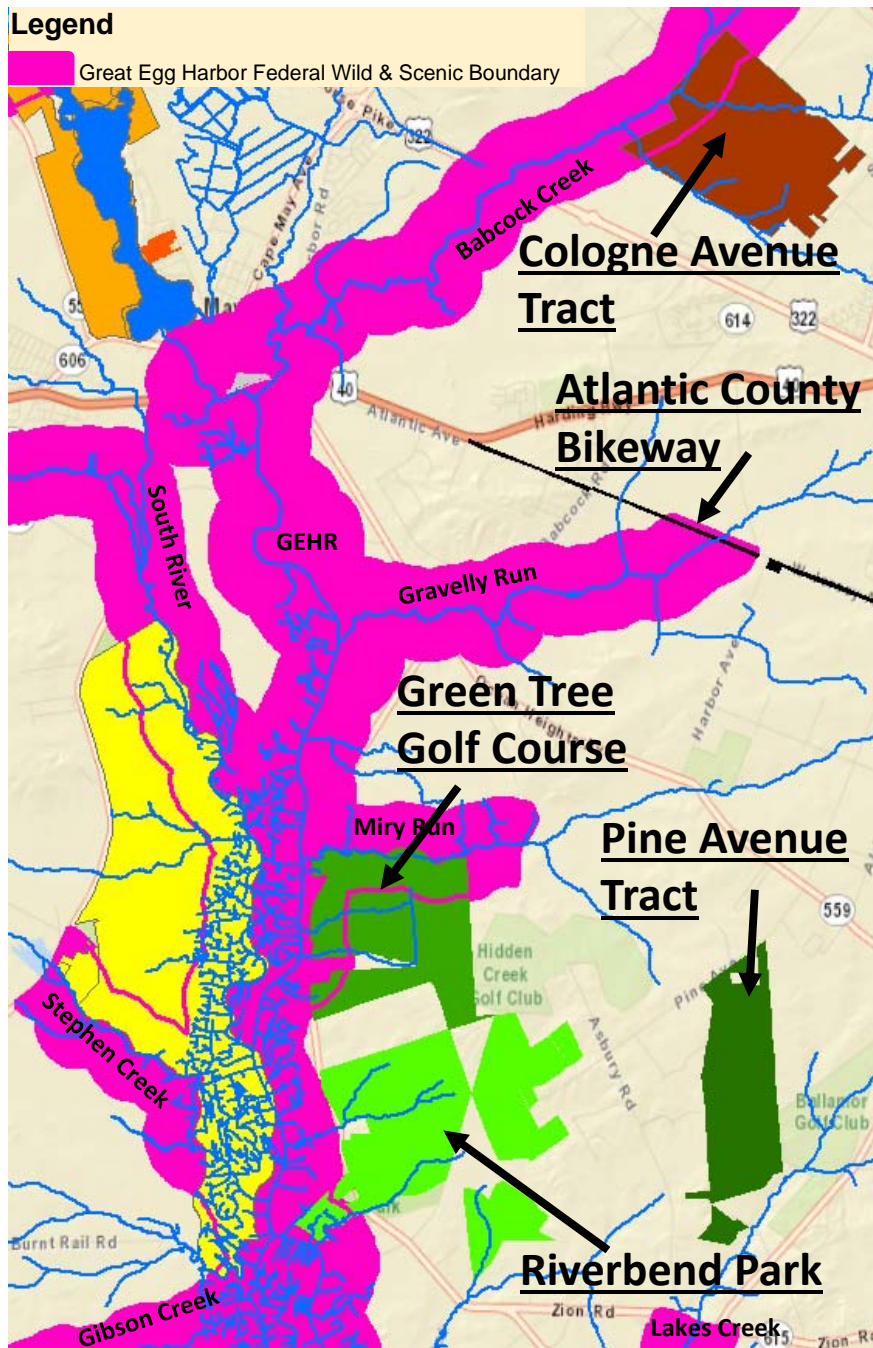


## Atlantic County Parks Recreation

**Gaskill Park** – Beautifully landscaped urban park on the tidal river with significant historical resources. Fishing, picnic area, playground, walkways, gazebo, benches.

**Estell Manor Park** – 1,700 acre park and historical site. The Warren E. Fox Nature Center is located within Estell Manor Park. This is the headquarters for the park system and where most of the environmental education and recreation programs are held. The center has environmental and live animal displays, as well as maps and brochures, restroom facilities, environmental information, and is where the River Council meets. Camping, boating, picnic areas, playgrounds, exercise trail, softball/soccer fields, volleyball, orienteering, bicycle trails, fishing, cross country skiing, hiking, swamp trail boardwalk, nature study, photography, and historical trails and sites.

<http://www.atlantic-county.org/parks/estell-manor-park.asp>



## Atlantic County Parks Recreation

**Cologne Avenue Tract** – 700 acres with extensive road and trail system ideal for hiking, hunting, biking, nature study.

<http://www.atlantic-county.org/documents/parks/trail-maps/CologneAve2016.pdf>

**Green Tree Golf Course** – 600 acres with 18 hole golf course surrounded by natural lands.

<http://greentree.aclink.org/>

**River Bend Park** – 1,300 acres with trail system for hiking, biking, horseback riding, fishing, hunting, and firearms training center.

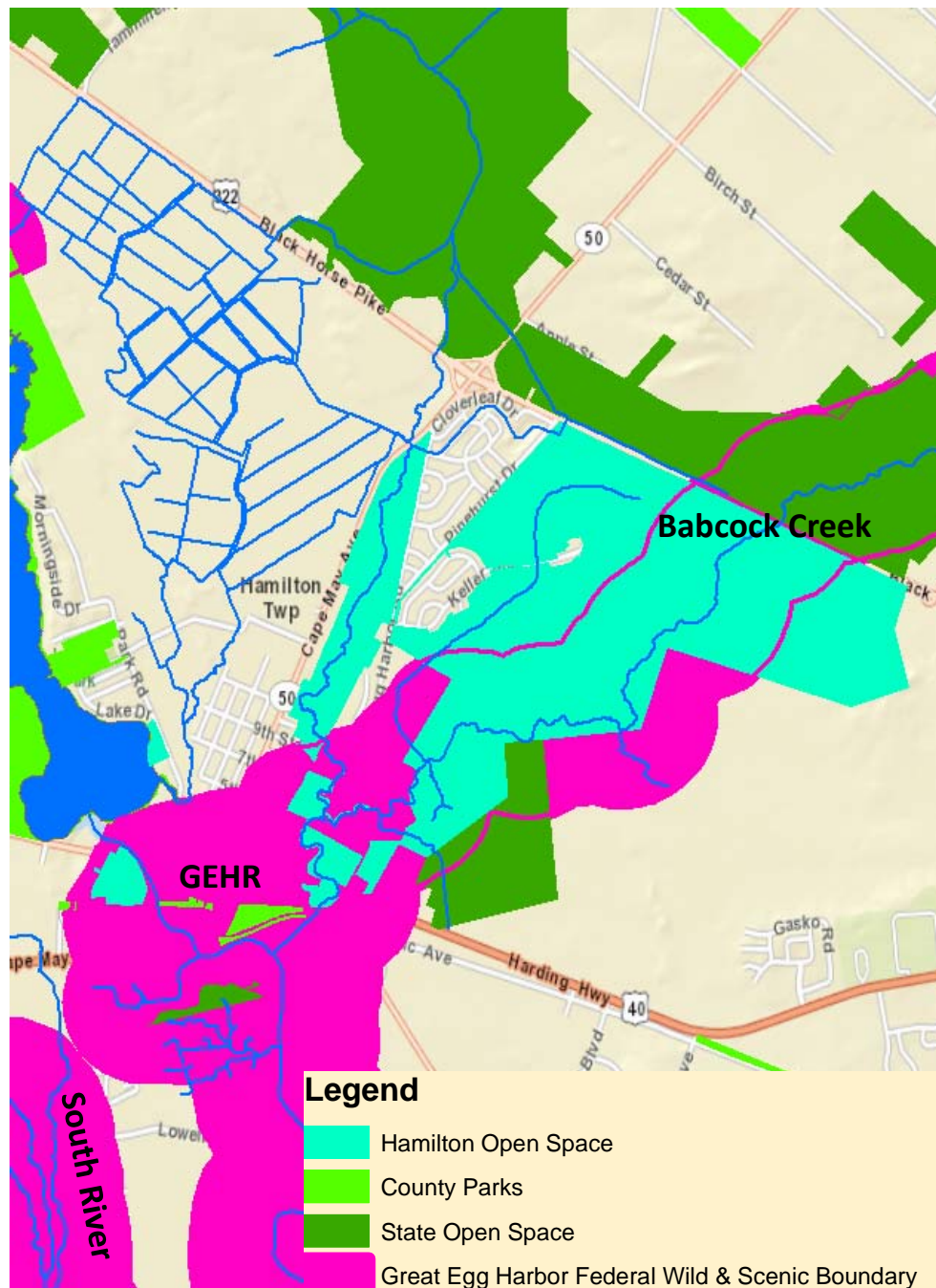
<http://www.atlantic-county.org/documents/parks/trail-maps/RiverBend2016.pdf>

**Pine Ave. Tract** – 400 acres with trail system for horseback riding, biking, hiking, hunting.

<http://www.atlantic-county.org/documents/parks/trail-maps/PineAve2016.pdf>

**Atlantic County Bike Way** - 7.56 mile paved bike and pedestrian path.

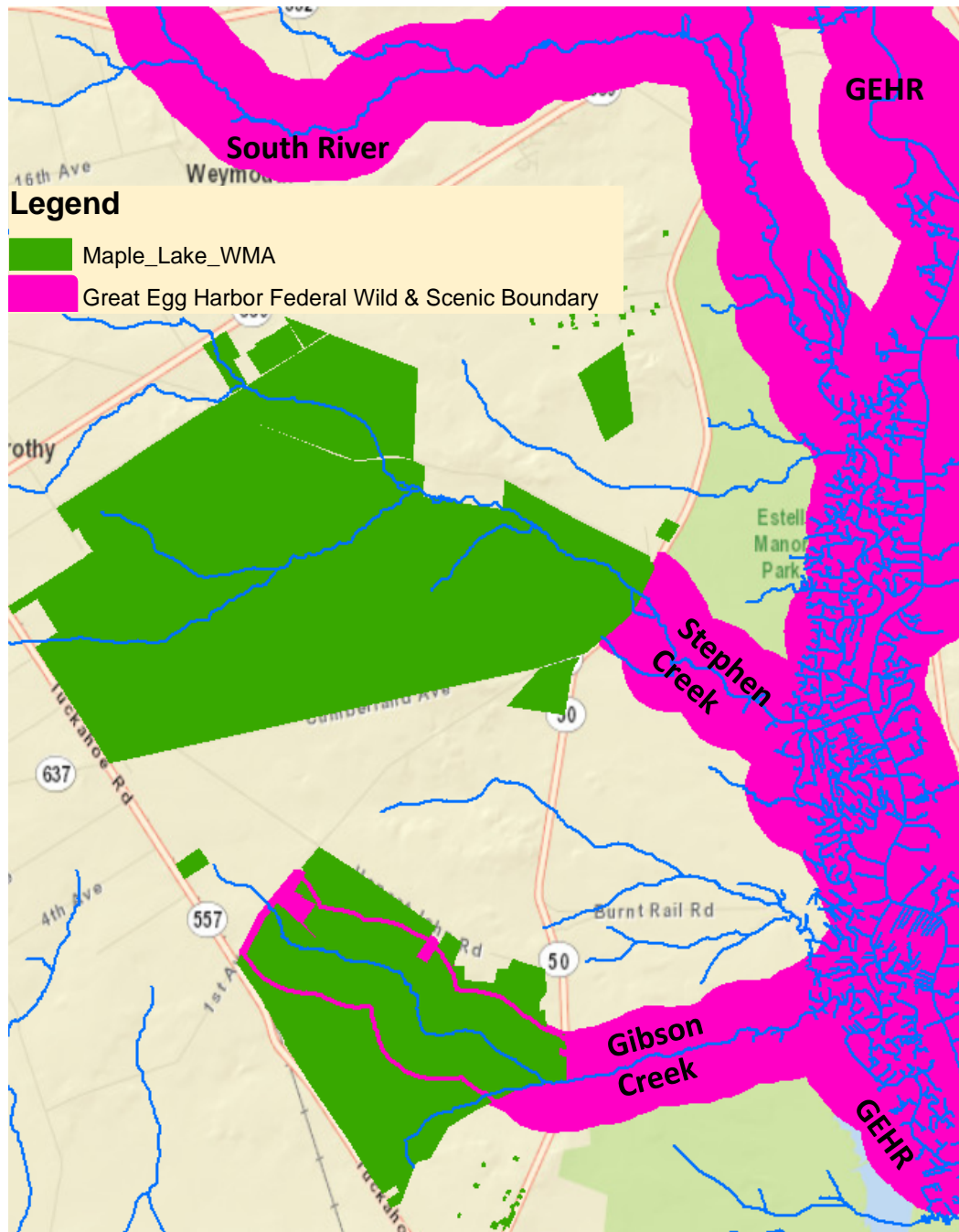
<http://www.atlantic-county.org/parks/bikeway.asp>



## Township of Hamilton Open Space

The Township of Hamilton hosts over 911 acres of mixed use open space, mostly around Babcock Creek and lake Lenape, and adjacent to state and county open space lands.

Hamilton's lands include a swimming beach on Lake Lenape, fishing and boating access below the lake in the federal boundary, fishing and boating on Babcock Creek, the Kaplan Preserve, and recreation at Under Hill Park, an urban river park, that includes 6 ball fields, tennis courts, hiking trails, and a pedestrian bridge across tidal Babcock Creek that provides excellent visual access within the federal boundary.



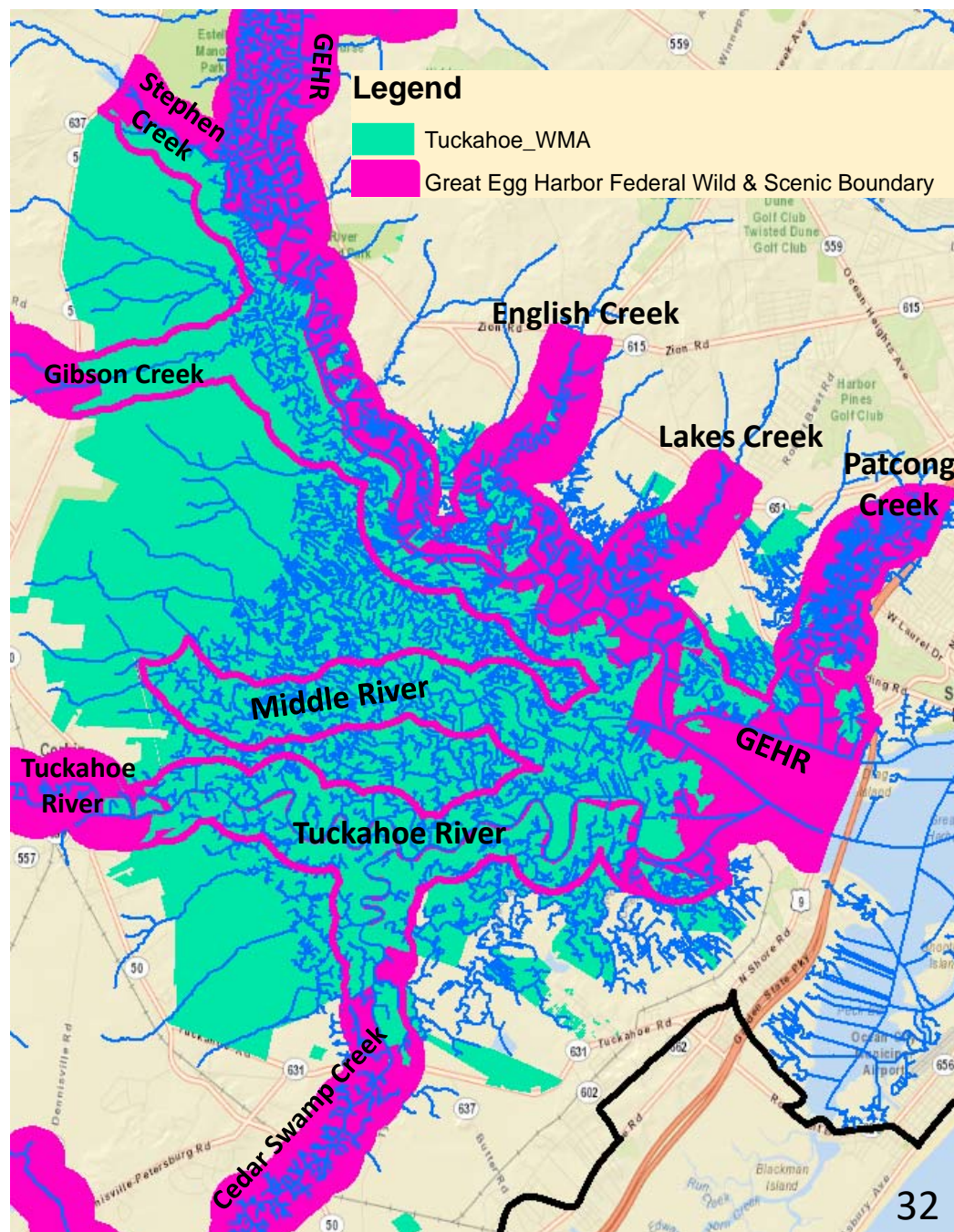
## Maple Lake WMA, 4,867 acres

This NJDEP WMA protects the headwaters of Stephens Creek and Gibson Creek.

Recreation opportunities include boating on a 30 acre lake, fishing, hunting, birding, wildlife viewing, nature study, photography, cross country skiing, hiking, and mountain biking.

[https://www.nj.gov/dep/fgw/pdf/wmamaps/maple\\_lake.pdf](https://www.nj.gov/dep/fgw/pdf/wmamaps/maple_lake.pdf)

<https://njaudubon.org/wp-content/wildlife/PineBarrensTrails/Sites/tabid/1698/Scope/site/Guide/PINEBARREN/Site/364/Default.html>



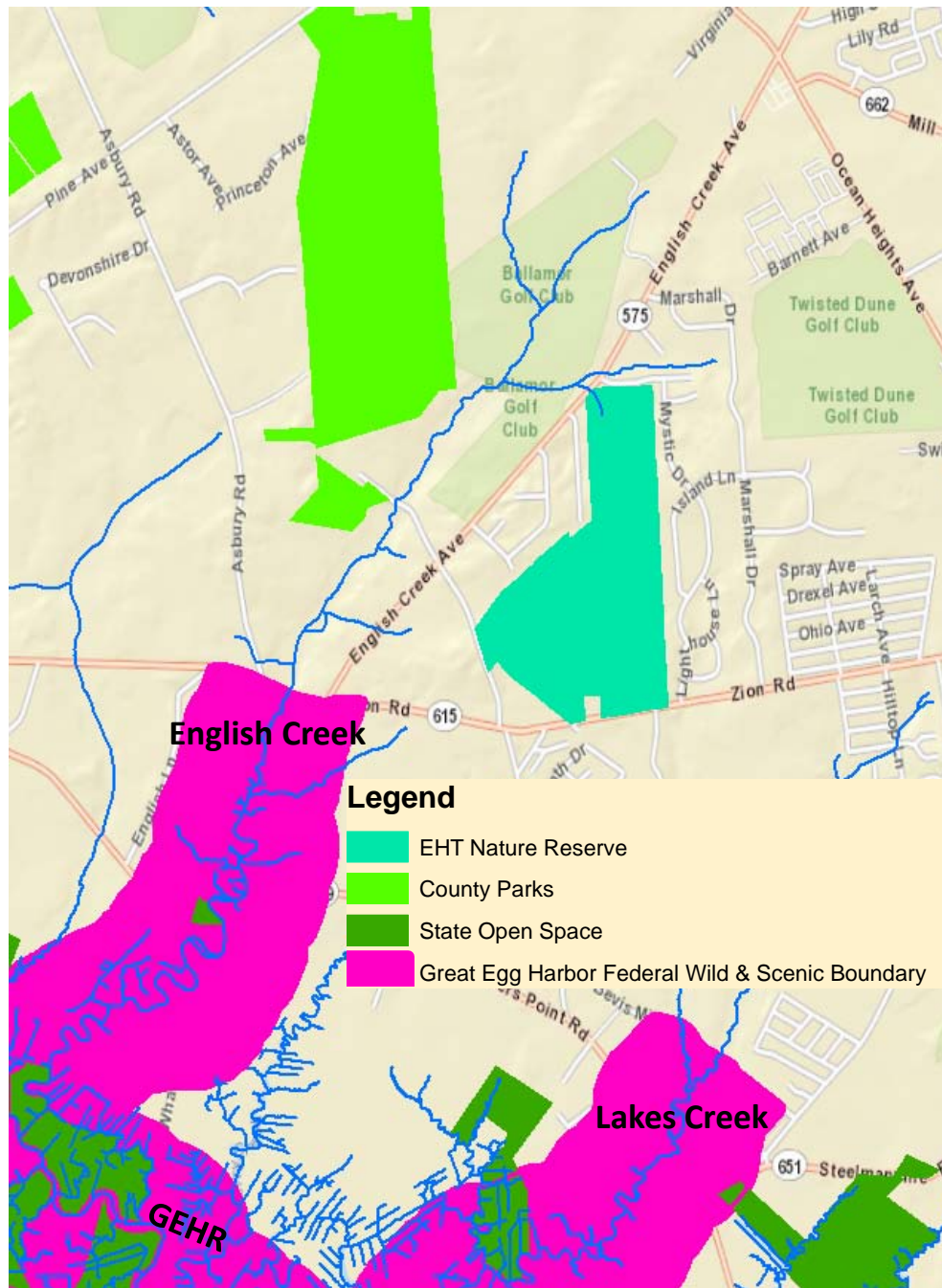
## Tuckahoe WMA, 18,643 acres

**One of the largest NJDEP WMAs in the watershed has the scenic designation and protects both tidal and non-tidal tributaries, including Stephens Creek, Gibson Creek, Cedar Swamp Creek, Tuckahoe River, Lakes Creek, English Creek, Patcong Creek, and Middle River. Six coastal impoundments and miles of dike roads with parking and viewing locations provide access.**

**Recreation opportunities include 2 boat ramps, boating of all kinds, fishing, crabbing, hunting, birding, wildlife viewing, nature study, photography, cross country skiing, hiking, and mountain biking.**

[https://www.nj.gov/dep/fgw/pdf/wma\\_maps/tuckahoe.pdf](https://www.nj.gov/dep/fgw/pdf/wma_maps/tuckahoe.pdf)

<https://njudubon.org/wp-content/wildlife/DelawareBayshoreTrails/Sites/tabid/440/Scope/site/Guide/DELBAYSH/Site/1/Default.html>



## Egg Harbor Township Open Space

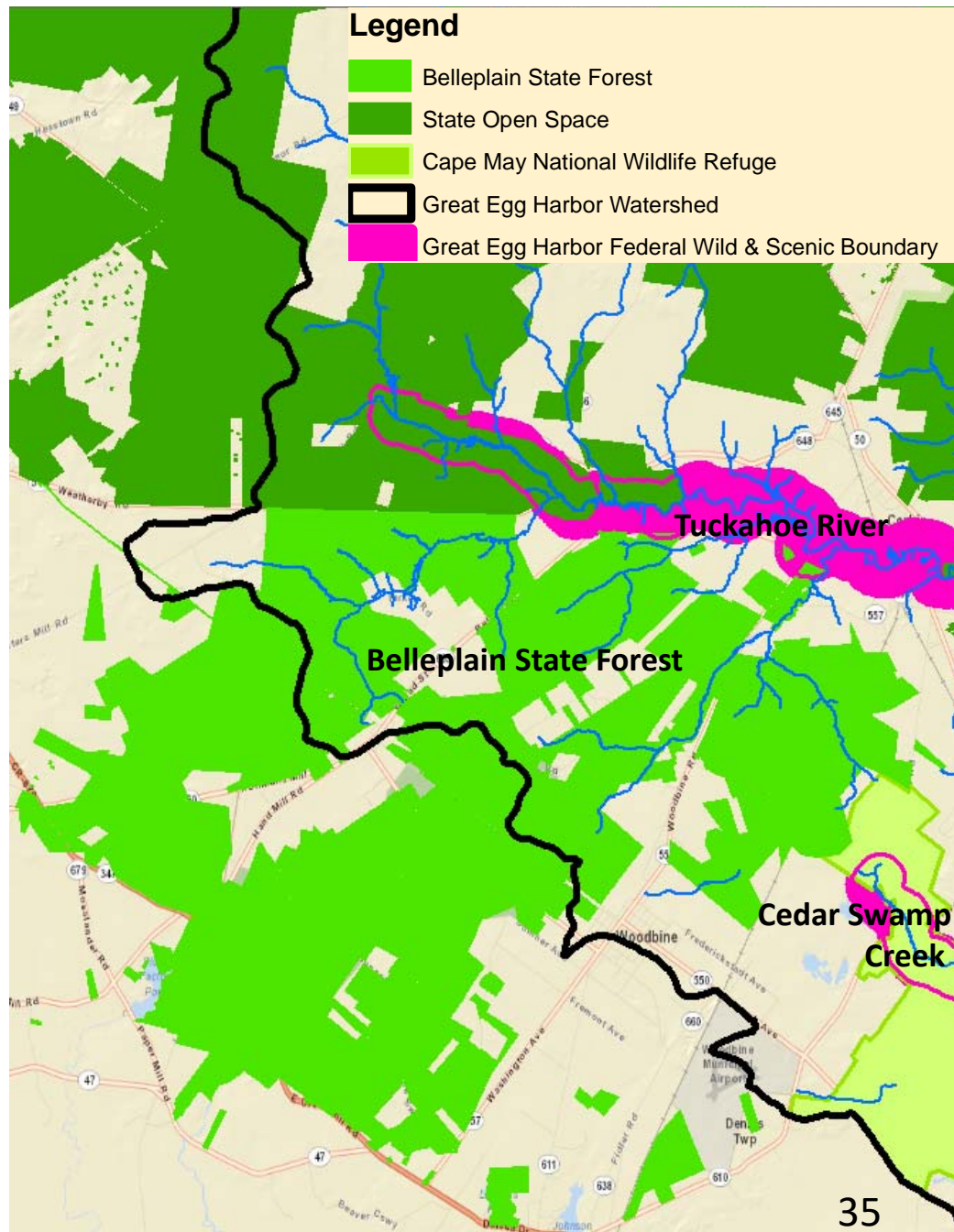
Egg Harbor Township hosts over 260 acres of mixed use open space, with the Egg Harbor Township Nature Reserve near English Creek being the largest. The reserve features an arboretum, Environmental Learning Center, 6 miles of hiking trails and a lake used for fishing and kayaking. The reserve is used for various events, and bird watching is a popular activity there.

[https://en.wikipedia.org/wiki/Egg\\_Harbor\\_Township\\_Nature\\_Reserve](https://en.wikipedia.org/wiki/Egg_Harbor_Township_Nature_Reserve)

<https://southjerseytrails.org/2017/02/12/ehtnaturereserve/>

<https://sites.google.com/site/ehtnatres/home>



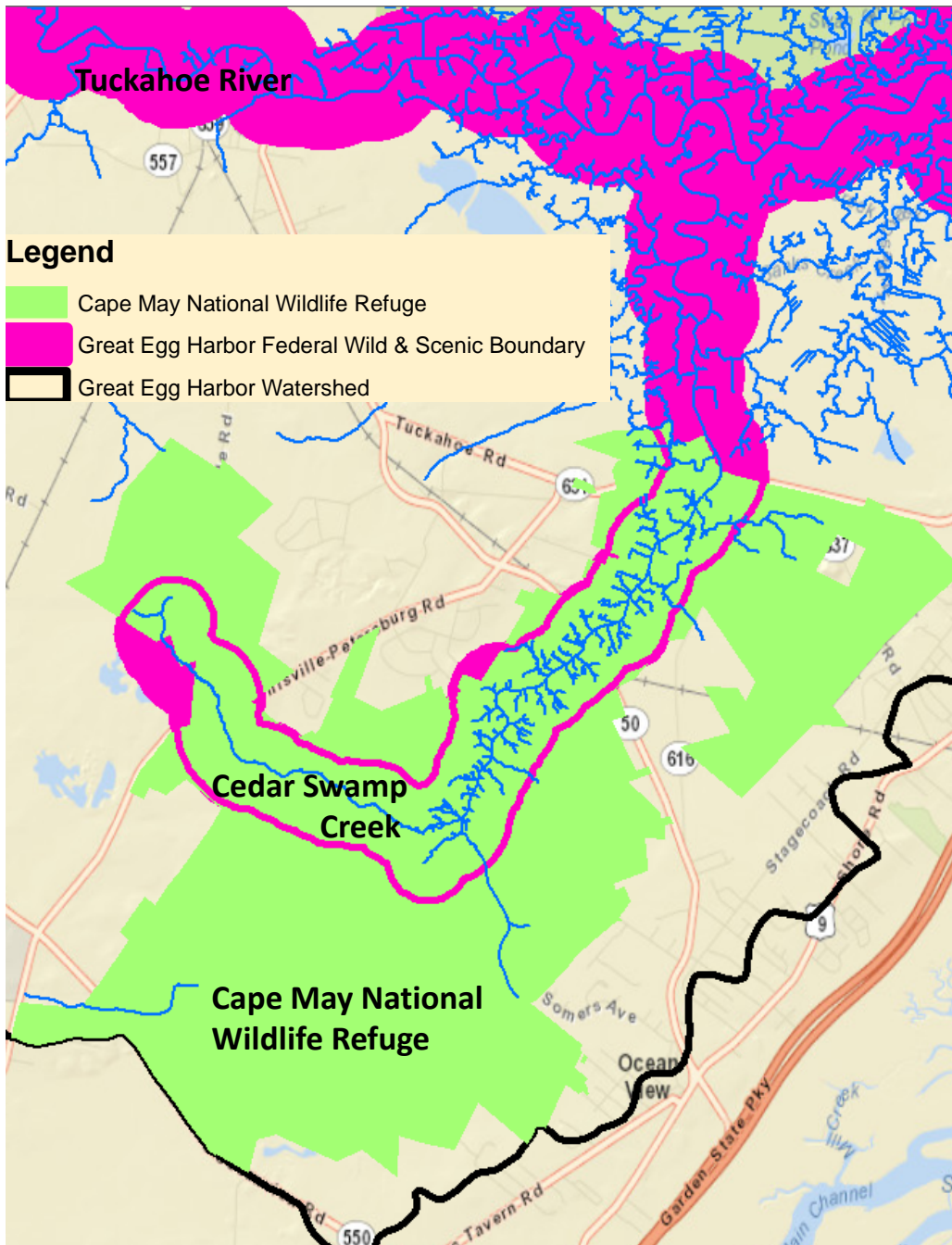


## **Belleplaine State Forest, 21,320 acres**

**Belleplaine State Forest was established in 1928 by the State of New Jersey for recreation, wildlife management, timber production, and water conservation. It is located in the headwaters of the Tuckahoe River.**

**Belleplaine offers 169 tent and trailer campsites, two group campsites for 50 people each, Fourteen lean-tos, 5 cabin like shelters, 1 group cabin for 30 people, 2 Group Picnic Areas for larger groups with a capacity of 100 people with shelter, playfields and playground equipment, regular picnic tables, softball field, playgrounds, concession stand, interpretive programs, fishing, swimming, boating, hunting, nature trails, horseback riding, mountain biking, biking, and a physical fitness trail, that all rival any National Park.**

**<https://www.state.nj.us/dep/parksandforests/parks/belle.html>**



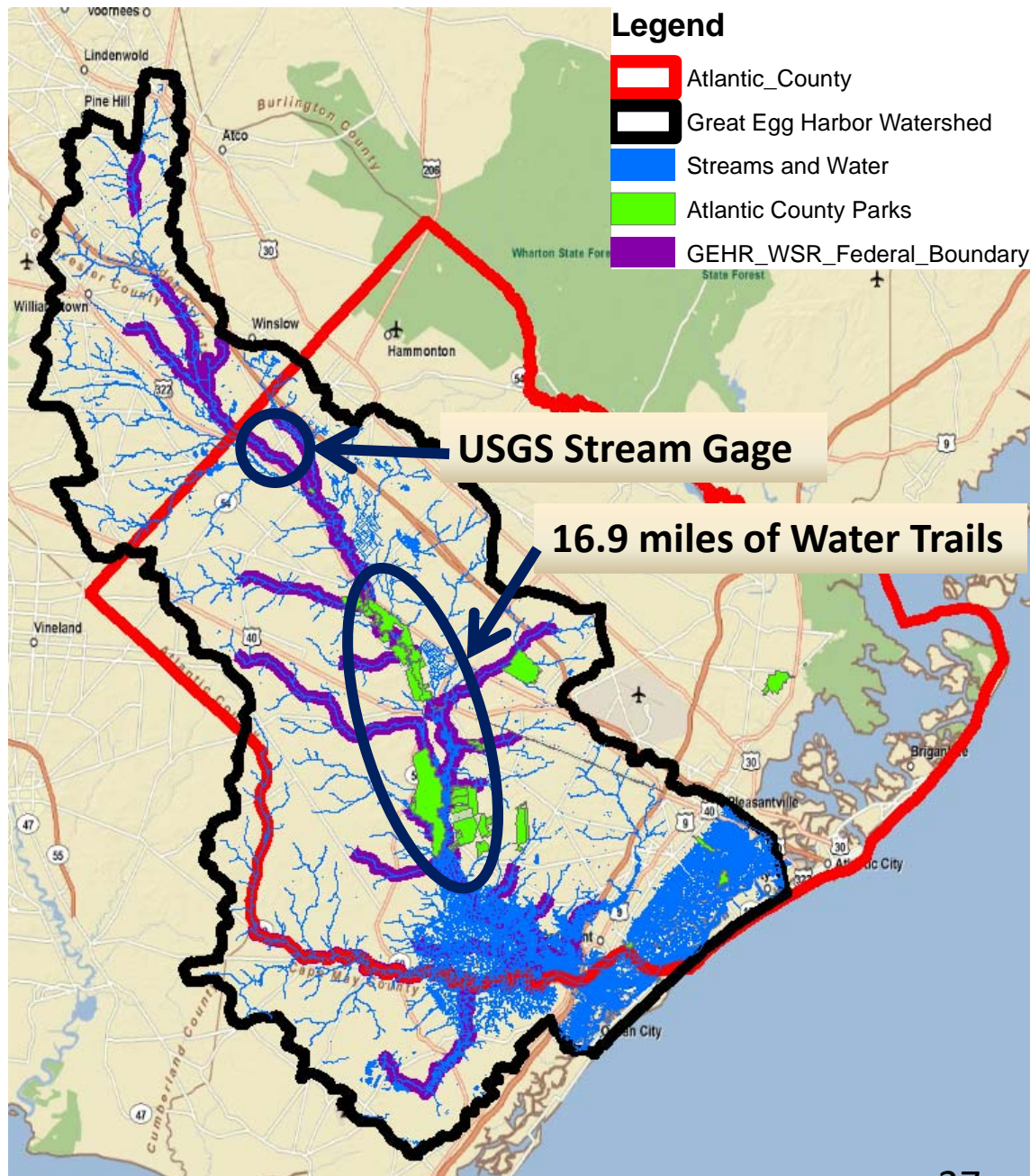
## Cape May National Wildlife Refuge

The Cape May National Wildlife Refuge has 687 acres in the watershed in its Great Cedar Swamp Division, which protects the headwaters and tidal reaches of Cedar Swamp Creek. Established in 1989 and operated by the U.S. Fish and Wildlife Service, it provides critical habitat to a wide variety of migratory birds and other wildlife.

Recreation opportunities include all types of boating on the tidal reaches, fishing, crabbing, birding, wildlife viewing, nature study, photography, hiking, and hunting

[https://www.fws.gov/refuge/cape\\_may/](https://www.fws.gov/refuge/cape_may/)

[https://www.fws.gov/uploadedFiles/Region\\_5/NWRS/North\\_Zone/Cape\\_May\\_Complex/Cape\\_May/CapeMayBrochure.pdf](https://www.fws.gov/uploadedFiles/Region_5/NWRS/North_Zone/Cape_May_Complex/Cape_May/CapeMayBrochure.pdf)



## Great Egg Harbor River Water Trails in Atlantic County Parks

In addition to the vast recreational opportunities on public open space, there are 16.9 miles of mapped non-tidal water trails that are heavily exploited by both commercial and private recreational users from late spring through early fall.

Hundreds of recreational users per day use these water trails for canoeing, kayaking, and tubing.

Two commercial liveries with property on the Wild and Scenic River in Hamilton Township have established thriving businesses.

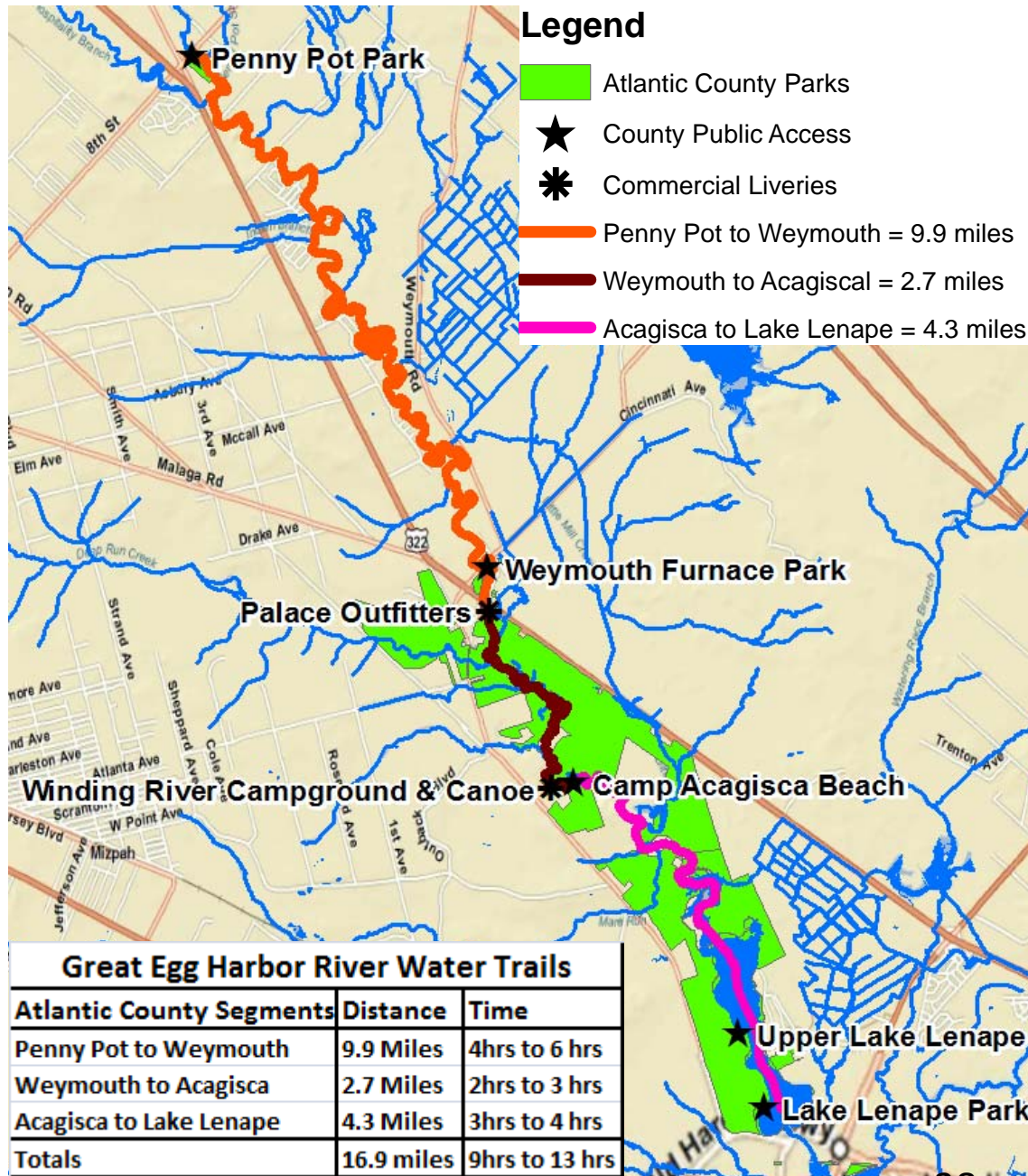
<http://www.thepalaceoutfitters.com/contact.html>  
<http://windingrivercamping.com/>

## Great Egg Harbor River Water Trails in Atlantic County Parks

The Great Egg Harbor Water Trail System includes 3 mapped segments with 5 put in and take out locations in Atlantic County Parks, and 4 put in and take out locations at riverside commercial liveries.

The GEHR is a beautiful slow flowing coastal plain river (100 cfs) through both public and private lands, but the many sharp twists and turns provide challenge and excitement.

The commercial liveries have created an uncontrolled proliferation of tubing use to maximize how many people they can get on the river for recreational use per day.



# Atlantic County Parks Along the Great Egg Harbor River



Great Egg Harbor River Water Trails		
Atlantic County Segments	Distance	Time
Penny Pot to Weymouth	9.9 miles	4 - 6 hours
Weymouth to Acagisca	2.7 miles	2 - 3 hours
Acagisca to Lake Lenape	4.3 miles	3 - 4 hours
<b>Totals</b>	<b>16.9 miles</b>	<b>9 - 13 hours</b>
You Are Here Non-County launch sites		



Atlantic County Division of Parks and Recreation  
Park Information (609) 625 - 8219 / Enforcement/Park Ranger (609) 442 - 9104 / Emergency: 911

## Canoe Trip Tips

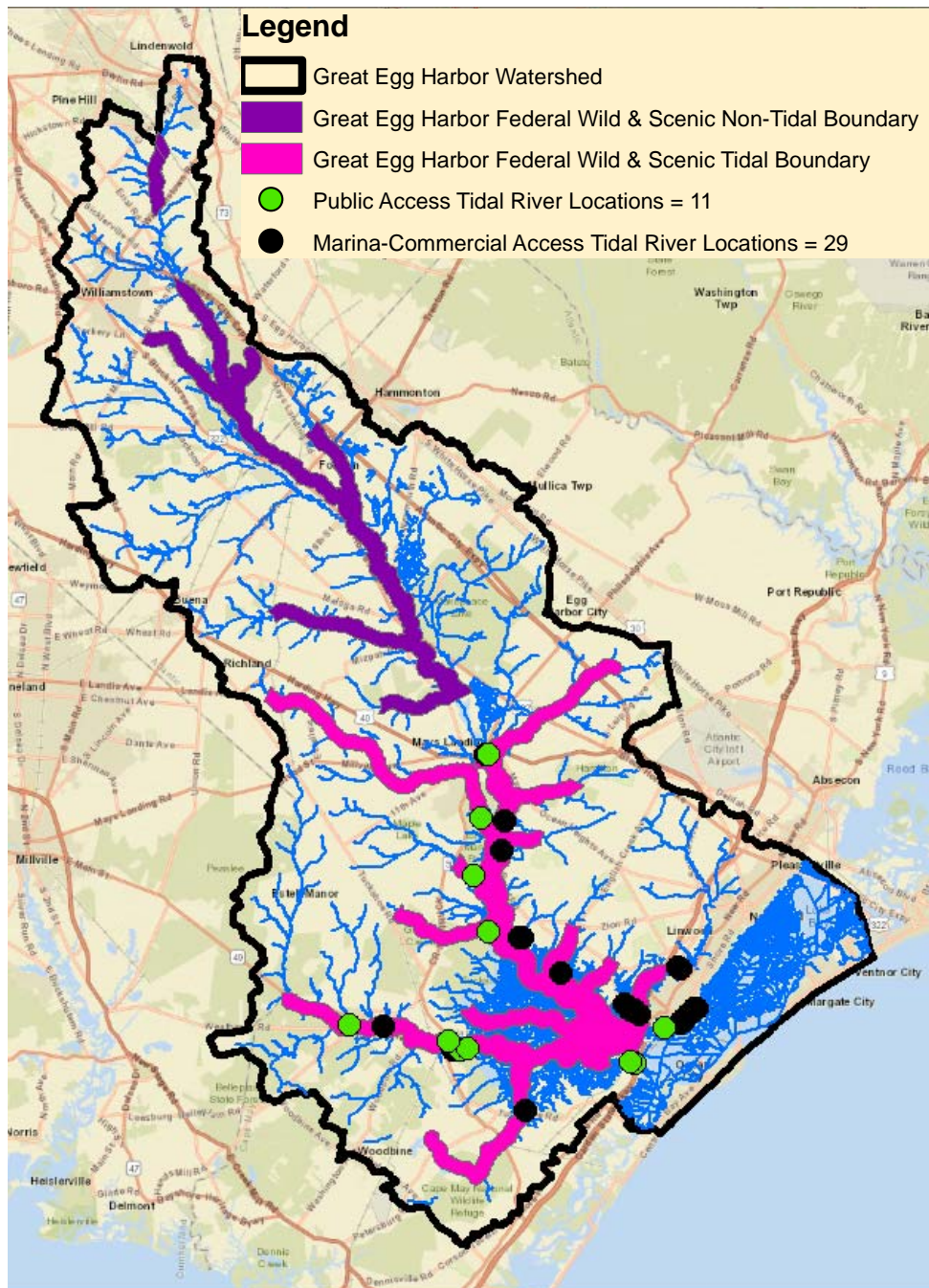
- Plan your trip around your skill level and always wear a life vest. The river can be unpredictable.
- Be aware – flooding from recent rains can cause swift currents and high water.
- Allow enough time to finish your trip before dark.
- Don't paddle alone, and leave a trip plan for safety.
- Bring a cell phone and place all valuables in a secured dry bag.
- Remember to bring food and water on your trip.
- DO NOT LITTER – Carry in carry out – Properly dispose of all trash.

**A Water Trail sign system was created and updated at put in locations by the GEHR Council and Atlantic County Parks to provide some management for the heavy recreational use of these reaches of the river.**

## Canoe Trip Tips

- Plan your trip around your skill level and always wear a life vest. The river can be unpredictable.
- Be aware – flooding from recent rains can cause swift currents and high water.
- Allow enough time to finish your trip before dark.
- Don't paddle alone, and leave a trip plan for safety.
- Bring a cell phone and place all valuables in a secured dry bag.
- Remember to bring food and water on your trip.
- DO NOT LITTER – Carry in carry out – Properly dispose of all trash.

**Trip distances and times were calculated for each of the three river trail segments, and a set of carefully selected trip tips was included on the signs. This has helped to increase safety and reduce nighttime search and rescue, services provided locally.**



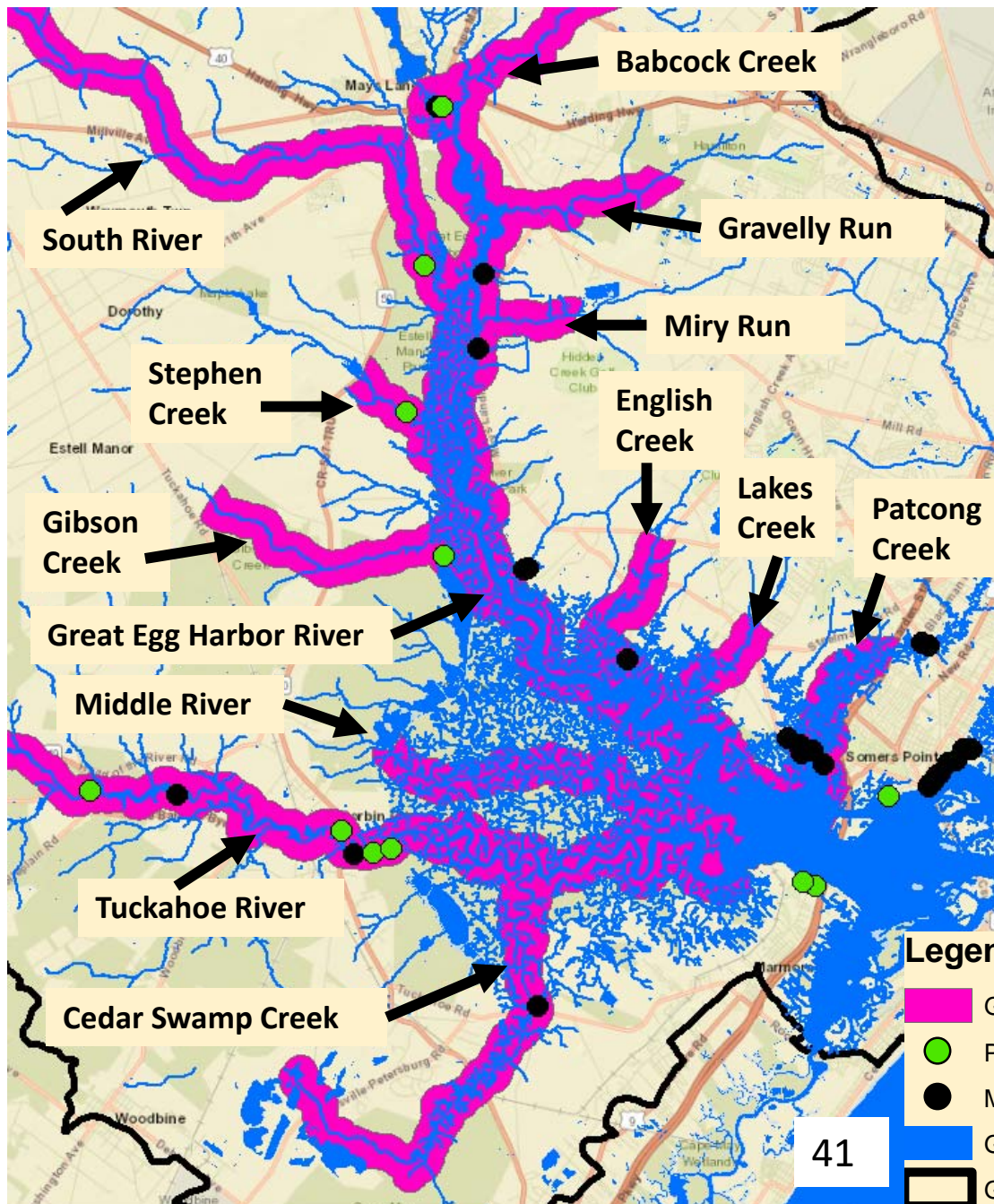
## Great Egg Harbor Tidal River and Estuary Recreational Access and Use

Approximately 65% (84.7 miles) of the GREG is tidal river and tidal tributaries, much of which is accessible by both motorized and non-motorized boats.

The designation study determined that the tidal river was heavily used for recreation, and the recreational use has increased exponentially since.

There has been an extraordinary proliferation of personal watercraft over the entire area, which has pushed recreational access into every tidal reach of the river and estuary.

Fishing and boating are also extremely popular. Fishing effort has increased greatly since designation, and all types of boating are enjoyed by thousands daily in the summer.



## Great Egg Harbor Tidal River and Estuary Recreational Access

In 2015, there were 11 public access locations and 29 private marinas on or near the tidal GREG. This does not include numerous private boat docks on the river and the many marinas and private docks in Ocean City.

The cumulative impact of all these access points brings thousands of recreational boaters to enjoy the Great Egg Harbor National Scenic and Recreational River every week in summer and hundreds in spring and fall.

### Legend

- Great Egg Harbor Federal Wild & Scenic Tidal Boundary
- Public Access Tidal River Locations = 11
- Marina-Commercial Access Tidal River Locations = 29
- Great Egg Harbor Water
- Great Egg Harbor Watershed

## **Great Egg Harbor River Recreation Events**

**In addition to the vast and abundant recreational opportunities on public lands and waters, there are many recreational events that occur on and near the river.**

**There are 12 municipalities on the River Council that all conduct large community events every year for fun and learning. Somers Point is exemplary of this with an outdoor summer concert series at William Morrow Beach on the Great Egg Harbor Bay and multiple events on the bay at Kennedy Park.**

**The largest single event on the Great Egg Harbor River is the Assault on Patcong Creek, the largest crabbing tournament in the United States with 340 crabbers from 14 states participating in 2019. <https://assaultonpatcongcreek.com/about-us/>**

**The Great Egg Harbor Watershed Association annually conducts 3 outdoor events per year that include paddling, hiking, picnicking, and frog walking.**