

Great Egg Harbor River Council

Chair:

Gregory Gregory

Bill Reinert

Somers Point

Vice Chair:

Rick Coe

Monroe Twp.

COUNCILLORS:

Julie Akers

Lou Harvey

Jenn Jennings

Buena Vista Twp.

Alison Stefanik

Kathleen Federico

Daniel Patterson

Corbin City

Bill Christman

Denise Appleget

Hamilton Twp.



Ralph Bernard

Bill Egan

Susan Stiles

Weymouth

Twp.

Clark Sprigman

Winslow Twp.

John Keenan

Lynnee LoCicero

Hammonton

Jim Owen

Jim Owen Jr.

Estell Manor

Greg Conway

Borough of

Folsom

David Brown

Tom Baum

Egg Harbor Twp.

Bill Handley

Steve Eisenhauer

Bill Stuempfig

Upper Twp.

Dick Colby

Paul Ludgate

Clay Emerson

GEHWA

Open Public Meetings Act Statement

This meeting was advertised pursuant to the NJ Open Public Meetings Act.

Meeting notices were sent to the Courier Post and the Press of Atlantic City.

All meeting notices are also posted on the GEHWA website calendar at www.gehwa.org.



River Council Roll Call

Julie Akers *Buena Vista Twp*

(Lou Harvey)

(Jenn Jennings)

Alison Stefanik *Corbin City*

(Kathleen Federico)

(Daniel Patterson)

Jim Owen *Estell Manor*

(William Donath Sr.)

Bill Christman *Hamilton Twp.*

(Michael Dupras)

Rick Coe *Monroe Twp.*

Ralph Bernard *Weymouth Twp.*

(Bill Egan)

(Susan Stiles)

Gregory Gregory *Somers Point*

(Bill Reinert)

John Keenan *Hammonton*

(Lynnee LoCicero)

Clark Sprigman *Winslow Twp.*

Bill Handley *Upper Twp.*

(Steve Eisenhauer)

(Bill Stuempfig)

Dick Colby *GEHWA*

(Paul Ludgate)

(Clay Emerson)

Greg Conway *Borough of Folsom*

David Brown *Egg Harbor Twp.*

(Tom Baum)

Approval of Last Meeting Minutes



Great Egg Harbor River Council

Public Portion



Great Egg Harbor River Council

Lynn Maun
Education and Outreach Coordinator



Ocean City Yacht Club Minnows at Corsons Inlet 7/29/25



Ocean City Yacht Club Minnows at Corsons Inlet 7/29/25



Upcoming Events

Saturday 9/6 - Somers Point Good Ol' Days

Saturday 9/27 (RD 9/28) - GEHWA Kayak event

Mon 9/8 (RD 9/15) - Homeschool at Corson's Inlet

Fri 10/17 (RD 10/24) - Jordan Rd School at Kennedy Park

TBA: Stockton Macros

Fernwood MS at Corson's Inlet

Late Fall paddle on Tuckahoe



National Park Service

Sarah Bursky ~

- **Outdoor Recreational Planner**
NPS NE Regional Office, Philadelphia, PA

- **Great Egg Harbor River**
(Atl., Glo., Cam., Cape.)

- **Maurice River** (Cumberland County, NJ)

- **Musconetcong River** (Hunterdon County, NJ)

White Clay Creek (Delaware)

Lower Delaware (NJ & PA)

This week, NPS approved a Notice of Award to GEHWA of \$210,000 for the Federal Fiscal Year October 1, 2025 to September 30, 2026. (This is the same funding level for the last 2 years).

This funding is from this year's (FY25) Continuing Resolution in March, approved by Congress.

For the FY 26 funding level for PWSRs, the House Appropriations Committee has marked up \$5.3 million (same as this year), and the Senate Appropriations Committee has marked up \$5.648 million, a slight increase which would go to two new rivers.



BUDGET The United States Department of the Interior **JUSTIFICATIONS**

and Performance Information
Fiscal Year 2025

NATIONAL PARK SERVICE

Old Business



Great Egg Harbor River Council

Paul, thanks for being with us for the past 20+ years!





River Council from the Past

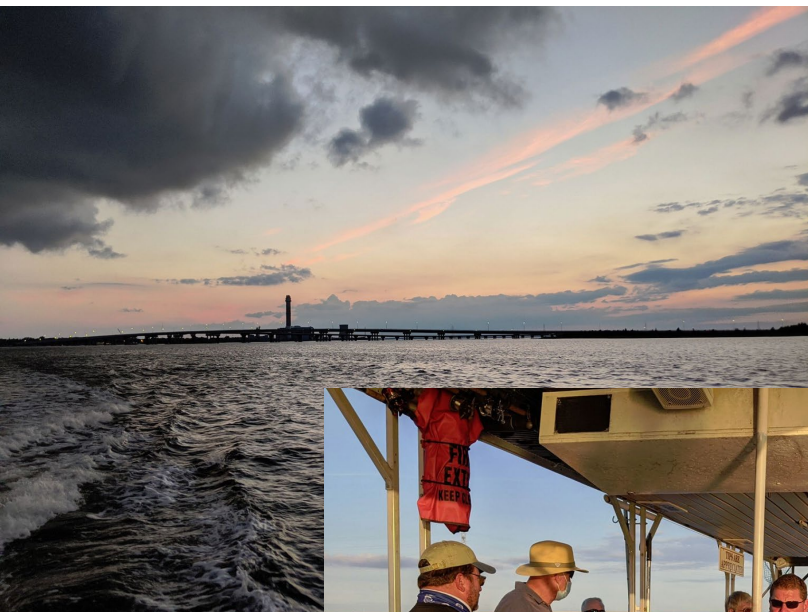




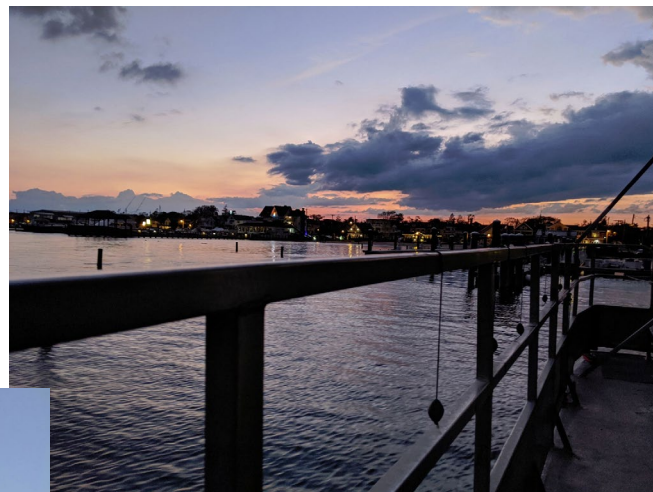


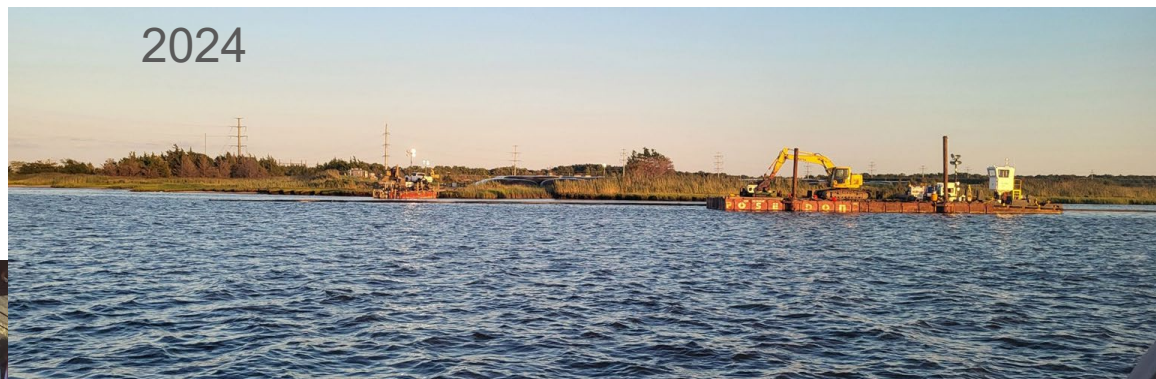
2017





2020





New Business



Great Egg Harbor River Council

River Councilor Reports for each Municipality.



Buena Vista Township
Corbin City
Egg Harbor Township
Estell Manor
Folsom Borough
Hamilton Township
Hammonton Town

Monroe Township
Somers Point City
Upper Township
Weymouth Township
Winslow Township
Great Egg Harbor Watershed
National Park Service

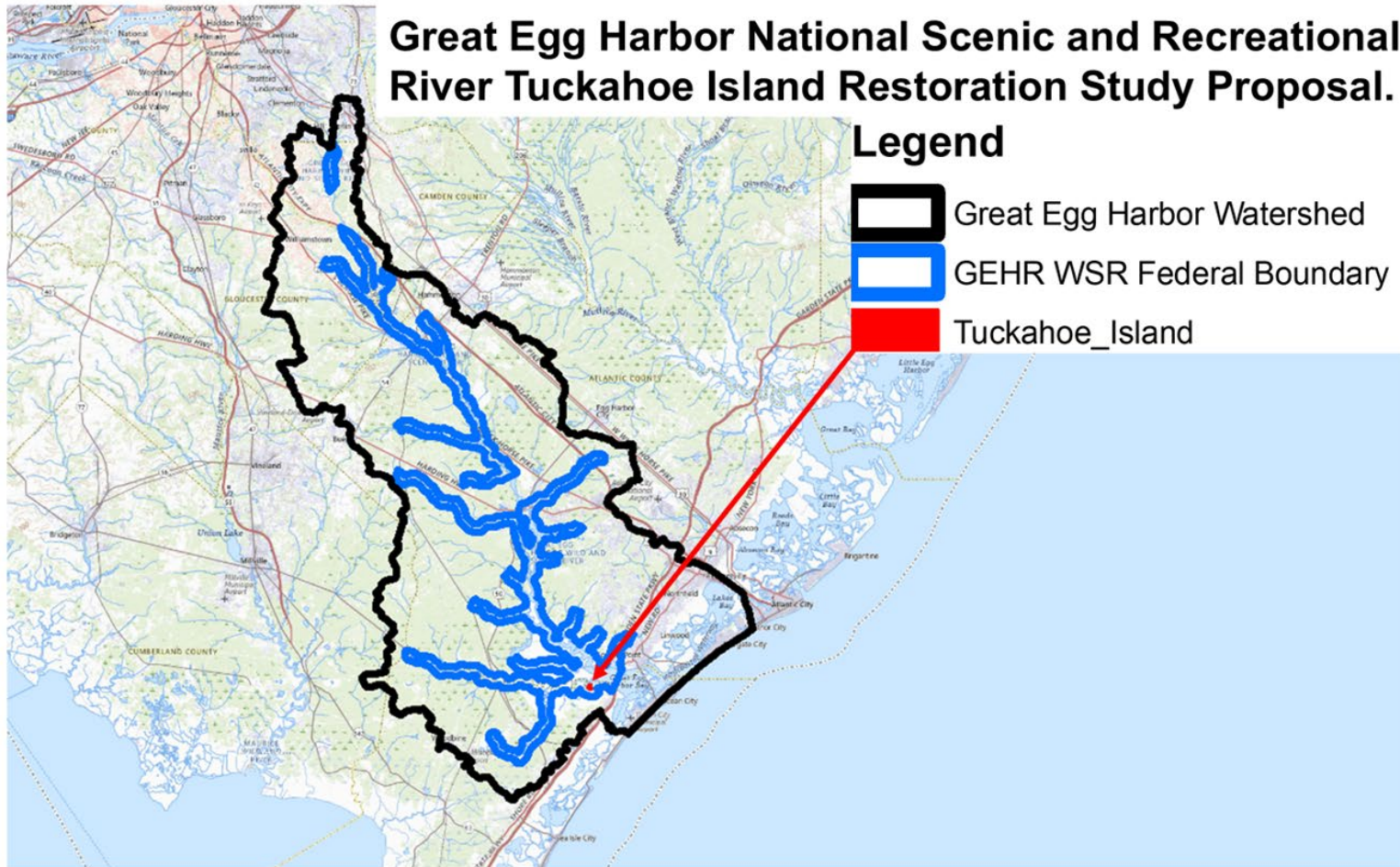
A wide-angle photograph of a calm body of water at sunset. The sun is a bright orange orb on the horizon, casting a long, shimmering reflection across the water's surface. The sky transitions from a pale blue at the top to a soft orange near the horizon. In the foreground, a wooden dock with a ramp and a small platform extends into the water from the left. The far shore is lined with dark silhouettes of trees and a few distant houses. The overall mood is peaceful and serene.

Administrator's Report

Great Egg Harbor National Scenic and Recreational River Tuckahoe Island Restoration Study Proposal.



Legend

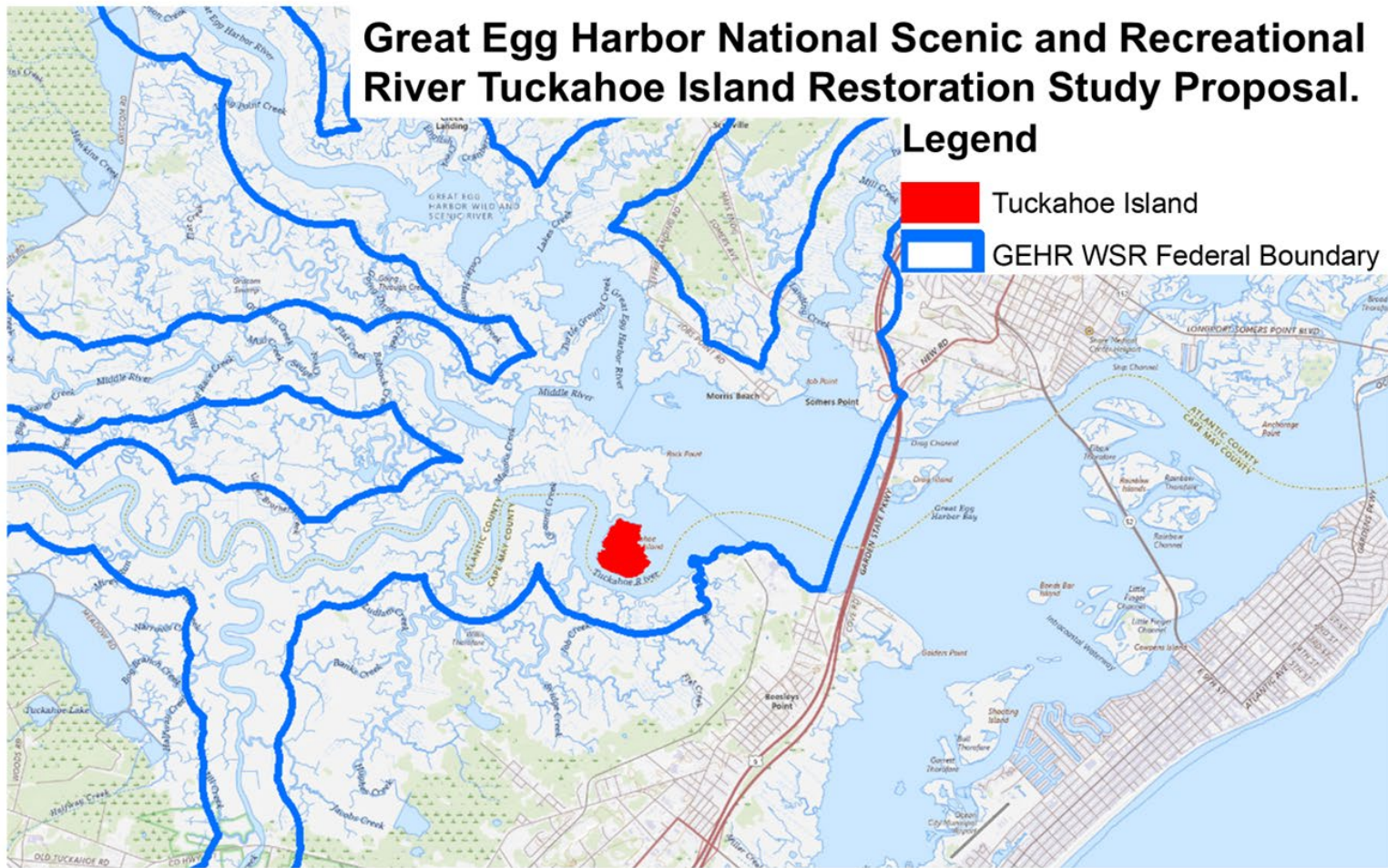
-  Great Egg Harbor Watershed
-  GEHR WSR Federal Boundary
-  Tuckahoe_Island



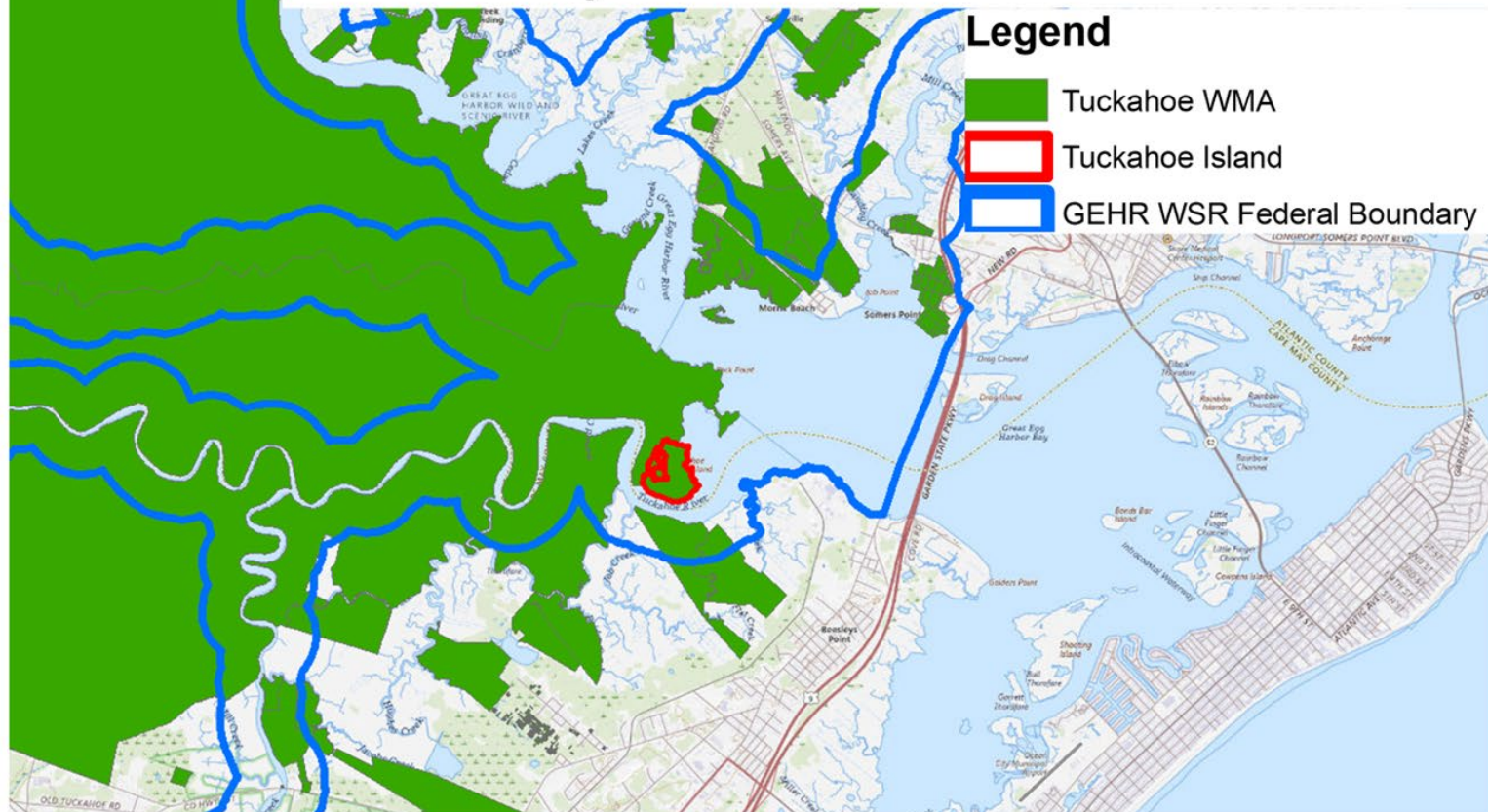
Great Egg Harbor National Scenic and Recreational River Tuckahoe Island Restoration Study Proposal.

Legend

-  Tuckahoe Island
-  GEHR WSR Federal Boundary



Tuckahoe Island is in the Tuckahoe Wildlife Management Area owned by NJDEP Division of Fish and Wildlife.



The interior and edges of Tuckahoe Island are being flooded many times per year now due to frequent flooding. The vegetation is rapidly converting to open mud.



7/25/23

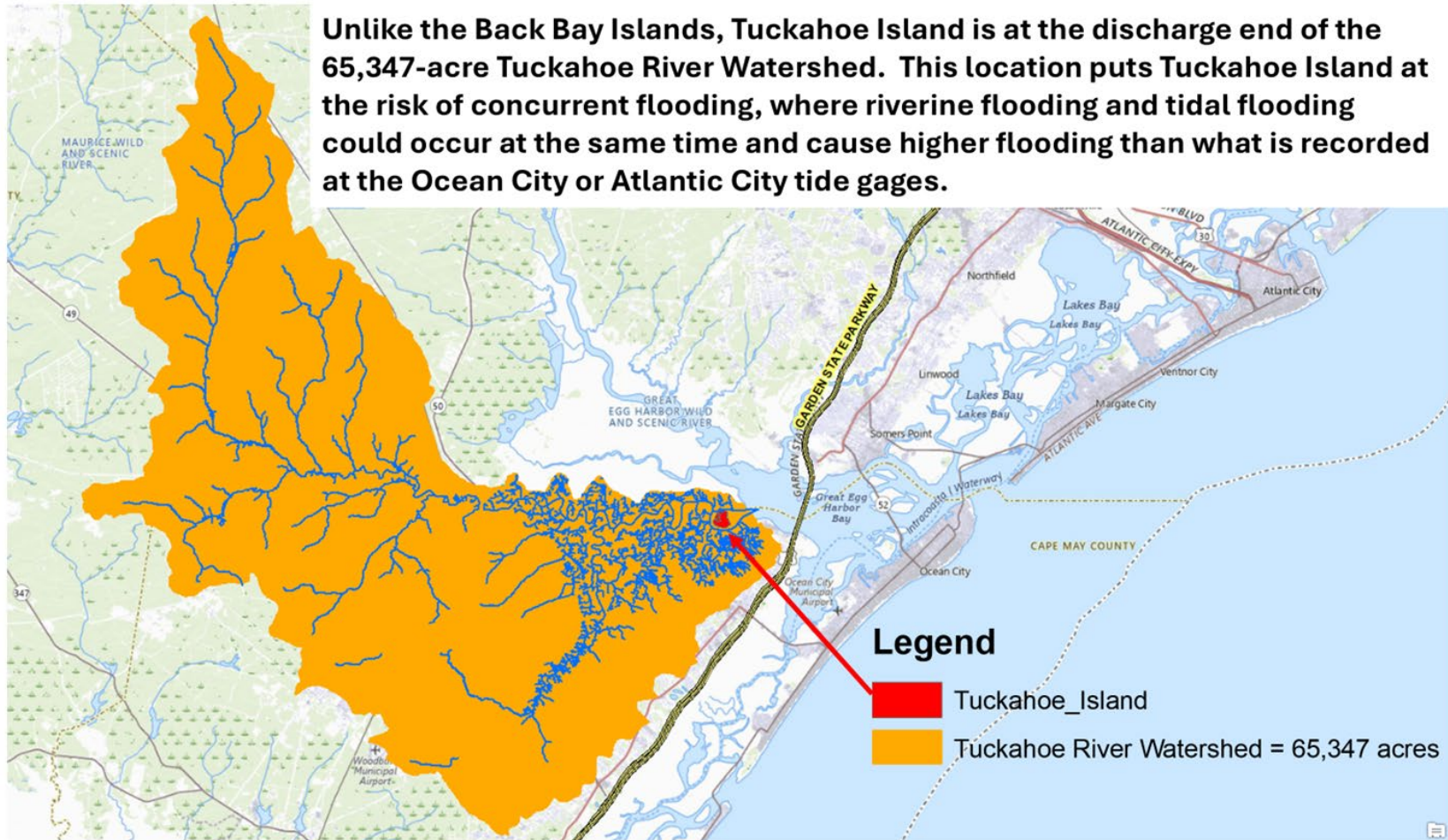
On 3/9/16, at low tide, the 2 large ponds on Tuckahoe Island retain water at low tide.



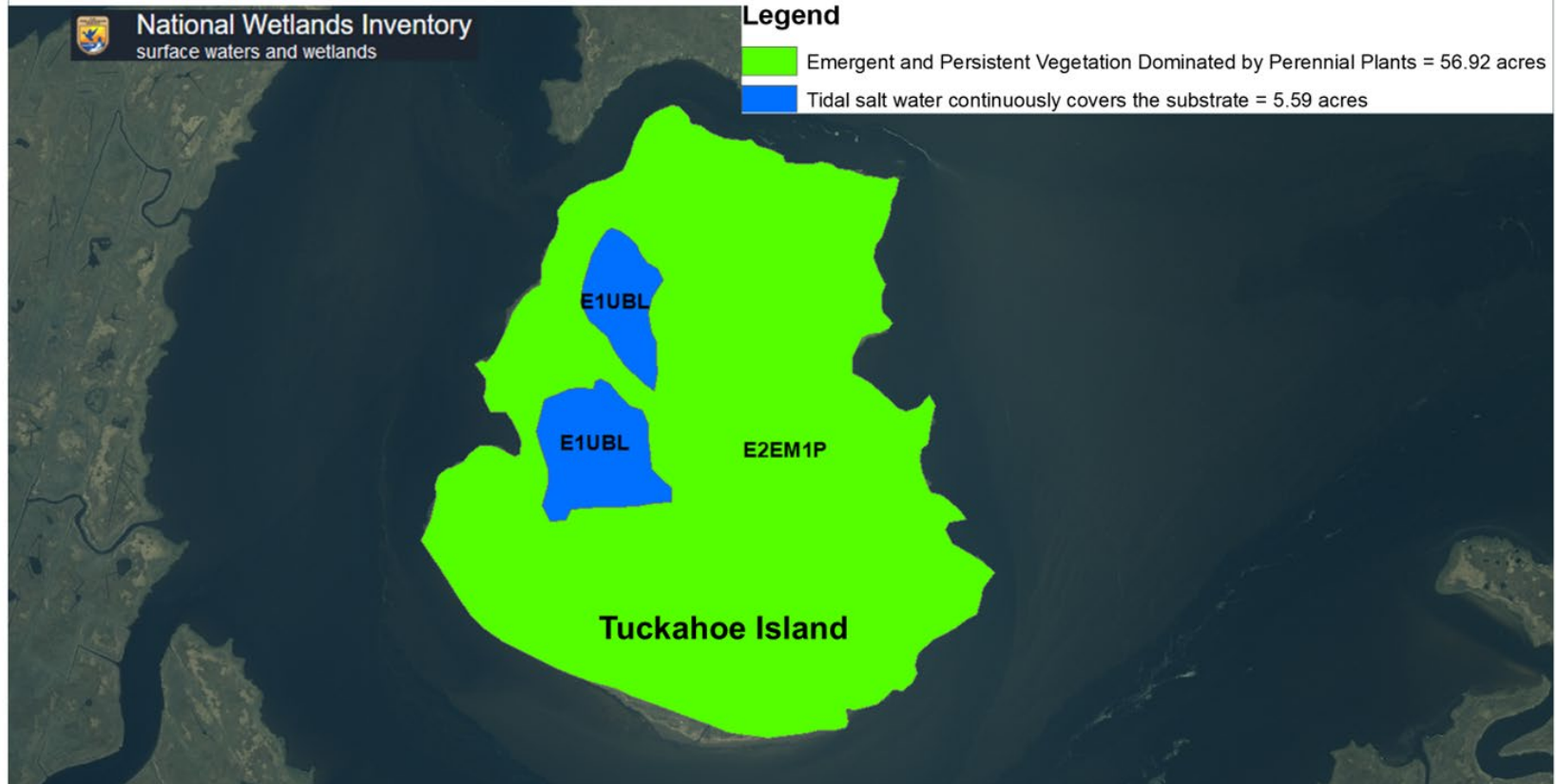
On 3/24/19, at low tide, the 2 large ponds on Tuckahoe Island are drained.

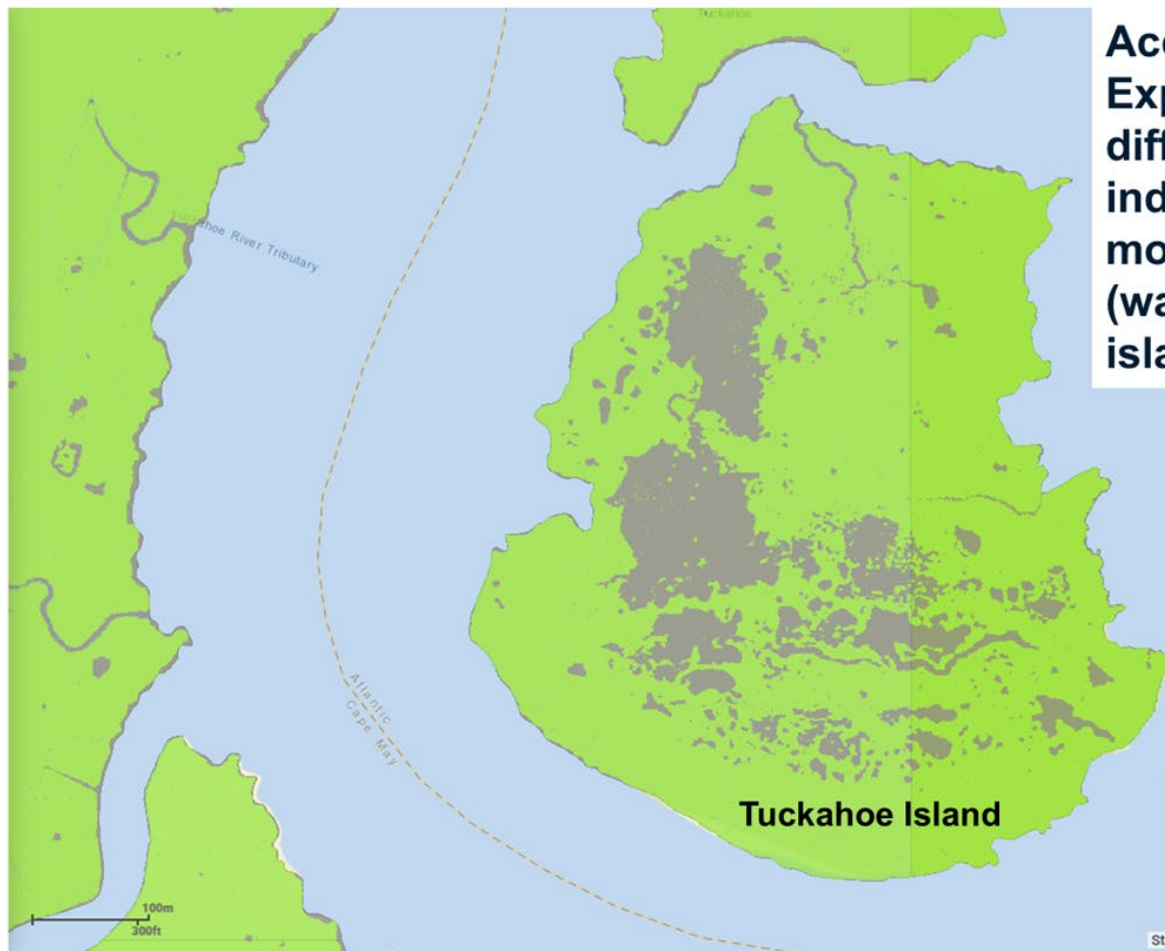


Unlike the Back Bay Islands, Tuckahoe Island is at the discharge end of the 65,347-acre Tuckahoe River Watershed. This location puts Tuckahoe Island at the risk of concurrent flooding, where riverine flooding and tidal flooding could occur at the same time and cause higher flooding than what is recorded at the Ocean City or Atlantic City tide gages.



According to the USFWS National Wetlands Inventory, there are two discrete Classification Codes on the 63-acre Tuckahoe Island, E1UBL and E2EM1P.



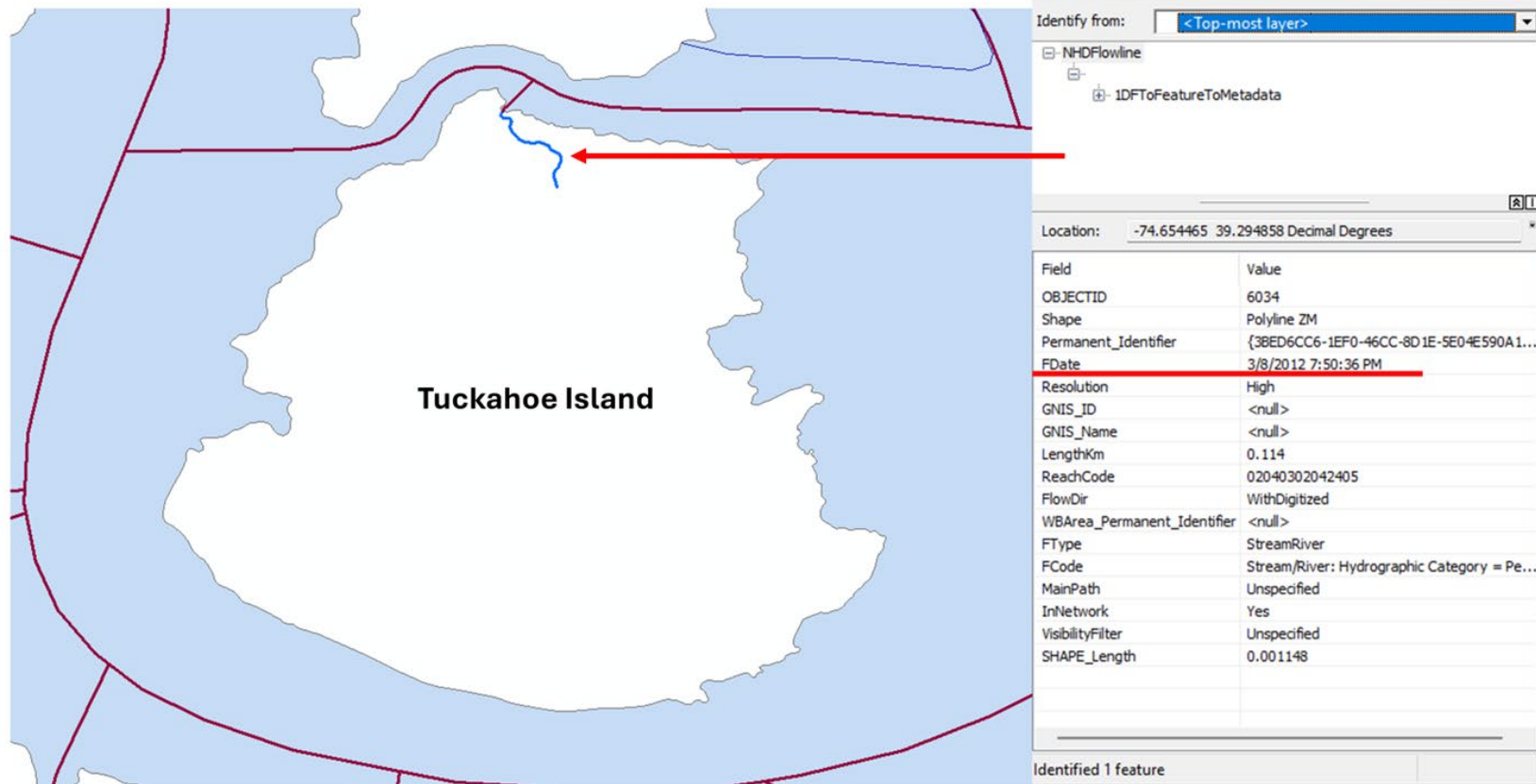


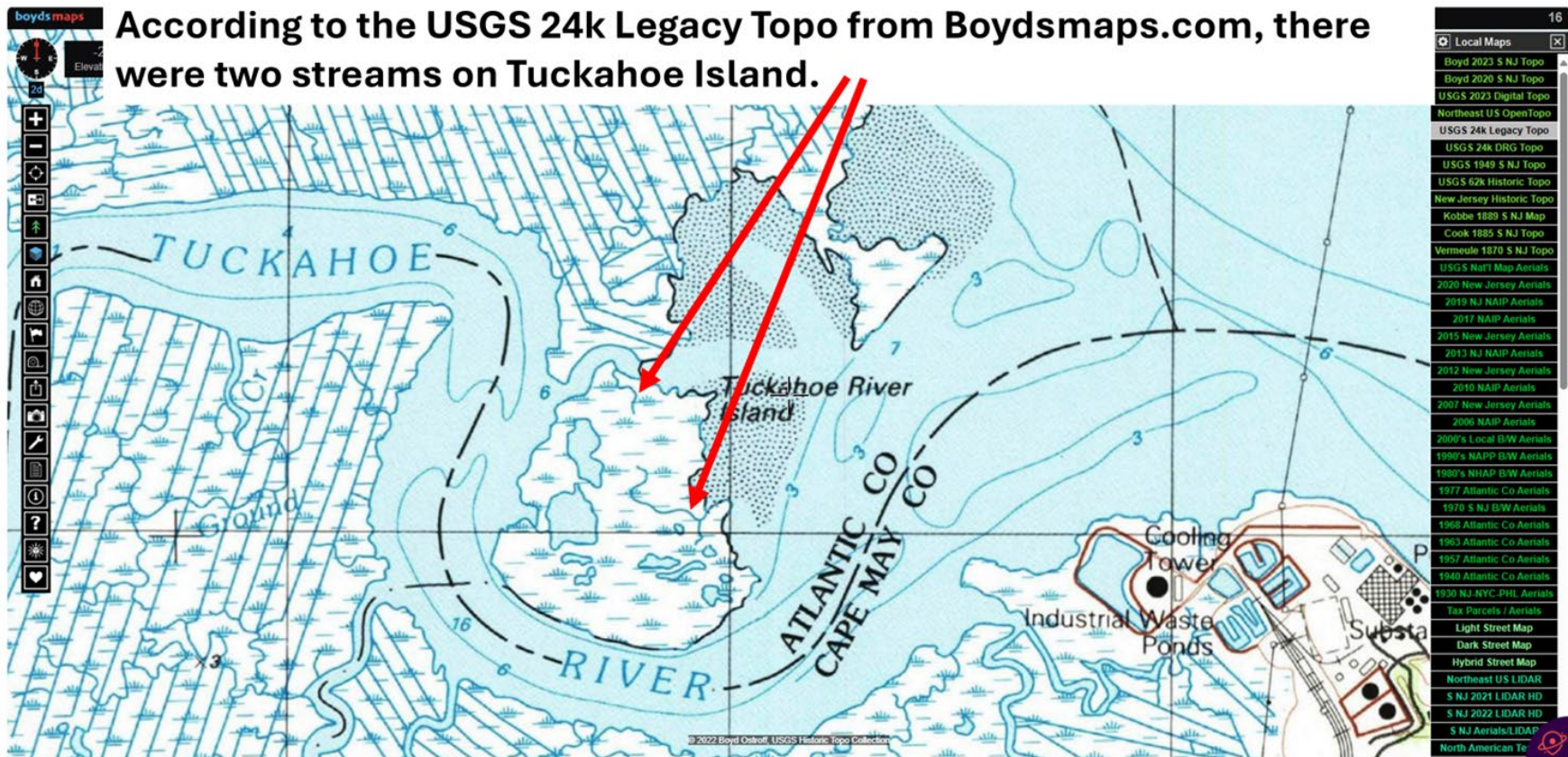
According to TNC's Marsh Explorer, the normalized difference vegetation index (NDVI) shows much more unvegetated area (water) on Tuckahoe island than the NWI does.

NDVI Wetland Vegetation Analysis

-  Vegetated
-  Unvegetated

According to the National Hydrography Dataset, there was only one small stream on Tuckahoe Island in 2012.





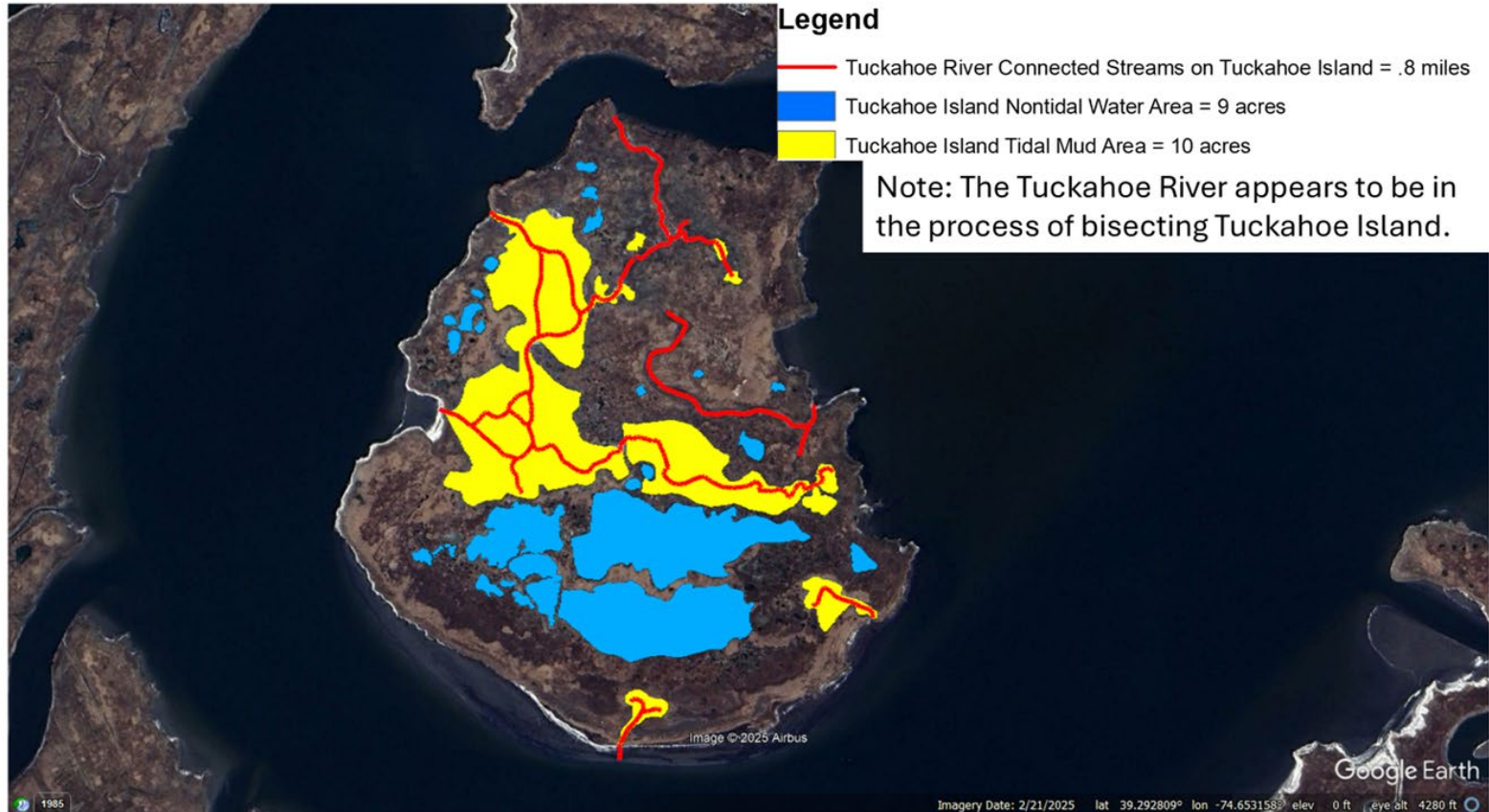
Only one stream is delineated on the Tuckahoe Island NJ 1970 Wetlands Basemap



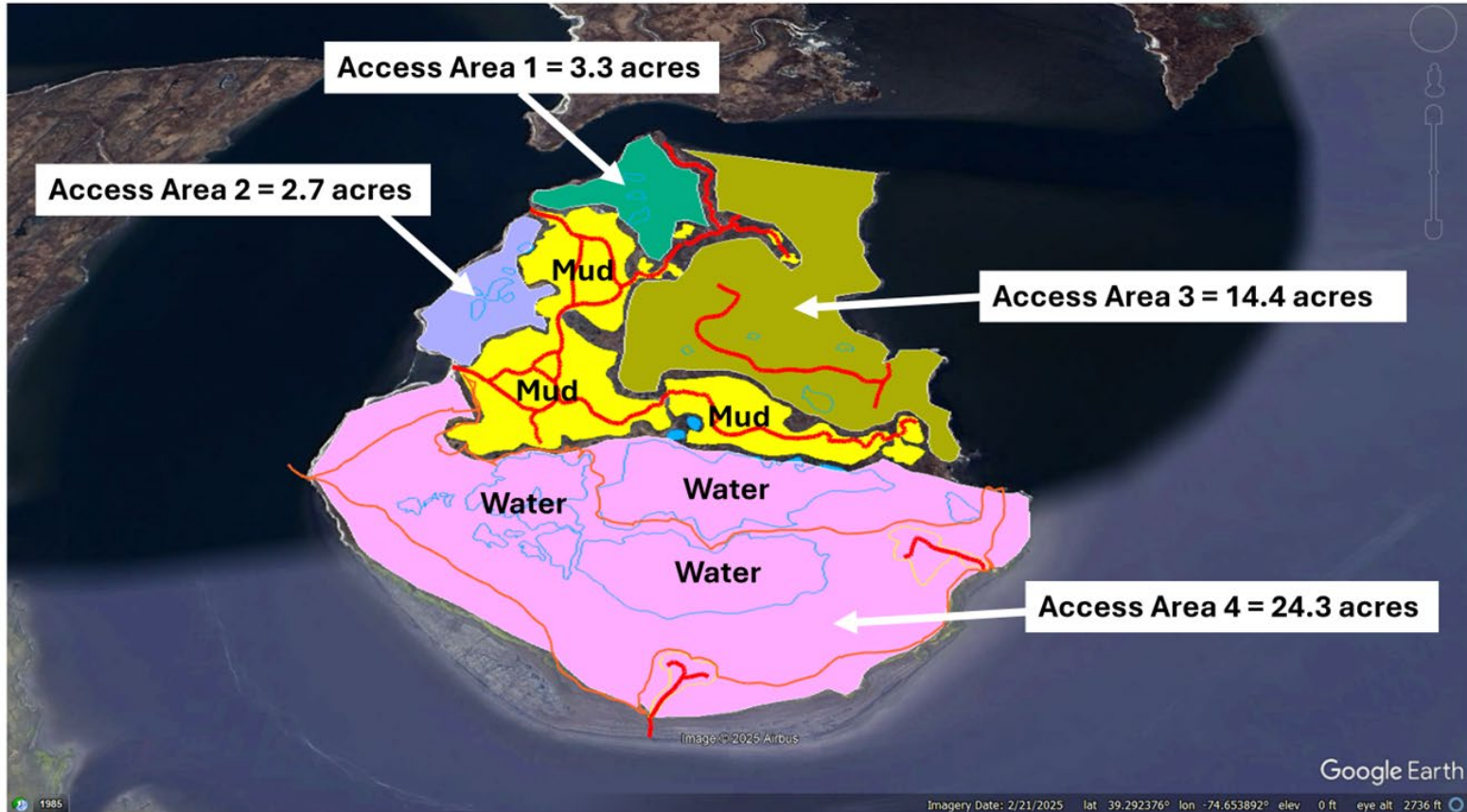
Visible with Google Earth 2/21/25 imagery, there are now almost 1 mile of streams with traceable morphology at low tide, that are draining Tuckahoe Island into the Tuckahoe River.



The Great Egg Harbor Watershed Association estimates that there are at least 10 acres that have converted to Tidal Mud Areas, and at least 9 acres of Nontidal Water on Tuckahoe Island now.



MidTRAM access on Tuckahoe Island is limited by water and mud. A 100-meter x 100-meter MidTRAM Assessment Area = 2.47 acres. Preliminary AA adjustments should be mapped prior to field verification.





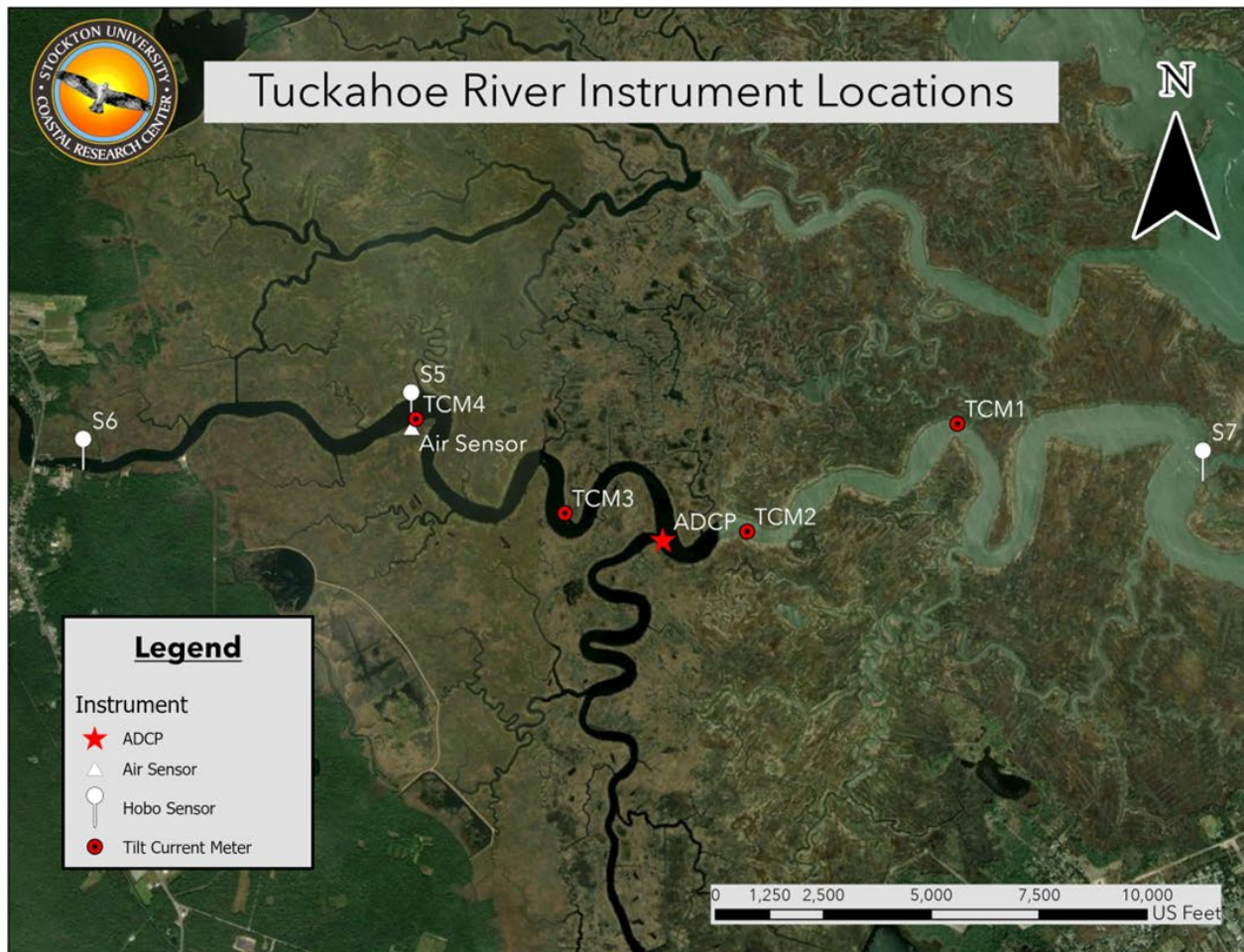
Tuckahoe River Instrument Locations



Legend

Instrument

- ★ ADCP
- ▲ Air Sensor
- Hobo Sensor
- Tilt Current Meter



Proposed data logger locations on Tuckahoe Island (NJDOT)



PVC pipes were installed on Tuckahoe Island in 2021 for a Surface Elevation Table (SET) from the New Jersey Tidal Wetland Monitoring Network NJTWMN.



PVC Pipes of Science on Tuckahoe Island, 7/13/25



PVC Pipes of Science on Tuckahoe Island, 7/13/25



Tuckahoe River SET C



Table Zoom to

| | |
|--------------------|----------------------|
| OBJECTID | 244 |
| Reserve | TUC |
| SET ID | TUC_03 |
| SET Name | Tuckahoe River SET C |
| ARM ID | ANSDU_2017 |
| Position 1 | 300 |
| Position 2 | |
| Position 3 | 210 |
| Position 4 | |
| Position 5 | 130 |
| Position 6 | |
| Position 7 | 30 |
| Position 8 | |
| Data Owner | Drexel University |
| SET Type | deep rod |
| Installation Date | 11/6/2021, 8:00 PM |
| First Sampled Date | 5/22/2022, 8:00 PM |
| Date Retired | |
| Rod Depth (m) | 10.000000 |
| SET Latitude | 39.290667 |
| SET Longitude | -74.656306 |

| | |
|---------------------------------|---|
| Ground Elevation (m) | |
| Receiver Elevation | 0.915000 |
| Elevation QA/QC | RTK GPS point(s), multiple points may be averaged if taken on same date |
| Vertical point of Reference | brass plate benchmark |
| Date of Receiver Elevation Data | |
| Marsh Type | North Atlantic Smooth Cordgrass Low Salt Marsh |
| Dominant Plant Species | Spartina alterniflora |
| Site Modifications | ditched |
| HUC14 | 02040302070120 |
| WMA Code | 15 |
| Salinity (ppt) | 23.900000 |
| Salinity Notes | average measurement from TWQ 8 |
| Tidal Creek Distance (m) | |
| Notes | |
| created_user | NJDEPBGIS |
| created_date | 2/3/2025, 2:03 PM |
| last_edited_user | NJDEPBGIS |
| last_edited_date | 2/3/2025, 2:03 PM |
| GlobalID | 0712ee52-6203-48ac-b180-a9c909ebf515 |

Tuckahoe Island Mud Area (TMA2) at low tide on 7/13/25



Tuckahoe Island Mud Area (TMA2) at low tide on 7/13/25



Separation between the Tuckahoe Island Mud Area (TMA2) and the Tuckahoe Island Water Area (TWA1) at low tide on 7/13/25





Tuckahoe Island fragmented drowning marsh, 7/13/25



Tuckahoe Island fragmented drowning marsh, 7/13/25

MidTRAM Training with Partnership for the Delaware Estuary

On 7/22 GEHWA, Kurt Cheng (NPS), and Tyler Kinney (NJ F&W) went out into the field on Boot Island behind Atlantic City to learn how to do marsh vegetation assessments and a specific vegetation assessment called MidTRAM

MidTRAM: Mid Atlantic Tidal Wetland Rapid Assessment

Conducting MidTRAM in the Great Egg

This summer, GEHWA and NJ Fish and Wildlife will be going out in the field and conducting MidTRAM vegetation assessments starting on Tuckahoe Island.

After this summer, we will work on collecting data along the Tuckahoe River and then in other areas in the coastal estuary.

Our goal is to collect baseline data that can help align dredging and restoration projects with Areas of Interest in our watershed.



NFWF

EasyGrantsID: 88062

National Fish and Wildlife Foundation – National Coastal Resilience Fund 2025, Full Proposal

Title: Developing a Marsh Nourishment Pipeline for the Great Egg Harbor Estuary (NJ)

Organization: The Nature Conservancy

Grant Information

Title of Project

Developing a Marsh Nourishment Pipeline for the Great Egg Harbor Estuary (NJ)

| | |
|--|---------------------------|
| Total Amount Requested | \$ 988,905.74 |
| Matching Contributions Proposed | \$476,788.00 |
| Proposed Grant Period | 06/01/ 2025 - 05/31/ 2028 |



NFWF

EasyGrantsID: 88062

National Fish and Wildlife Foundation – National Coastal Resilience Fund 2025, Full Proposal

Title: Developing a Marsh Nourishment Pipeline for the Great Egg Harbor Estuary (NJ)

Organization: The Nature Conservancy

Total Amount Requested \$ 988,905.74

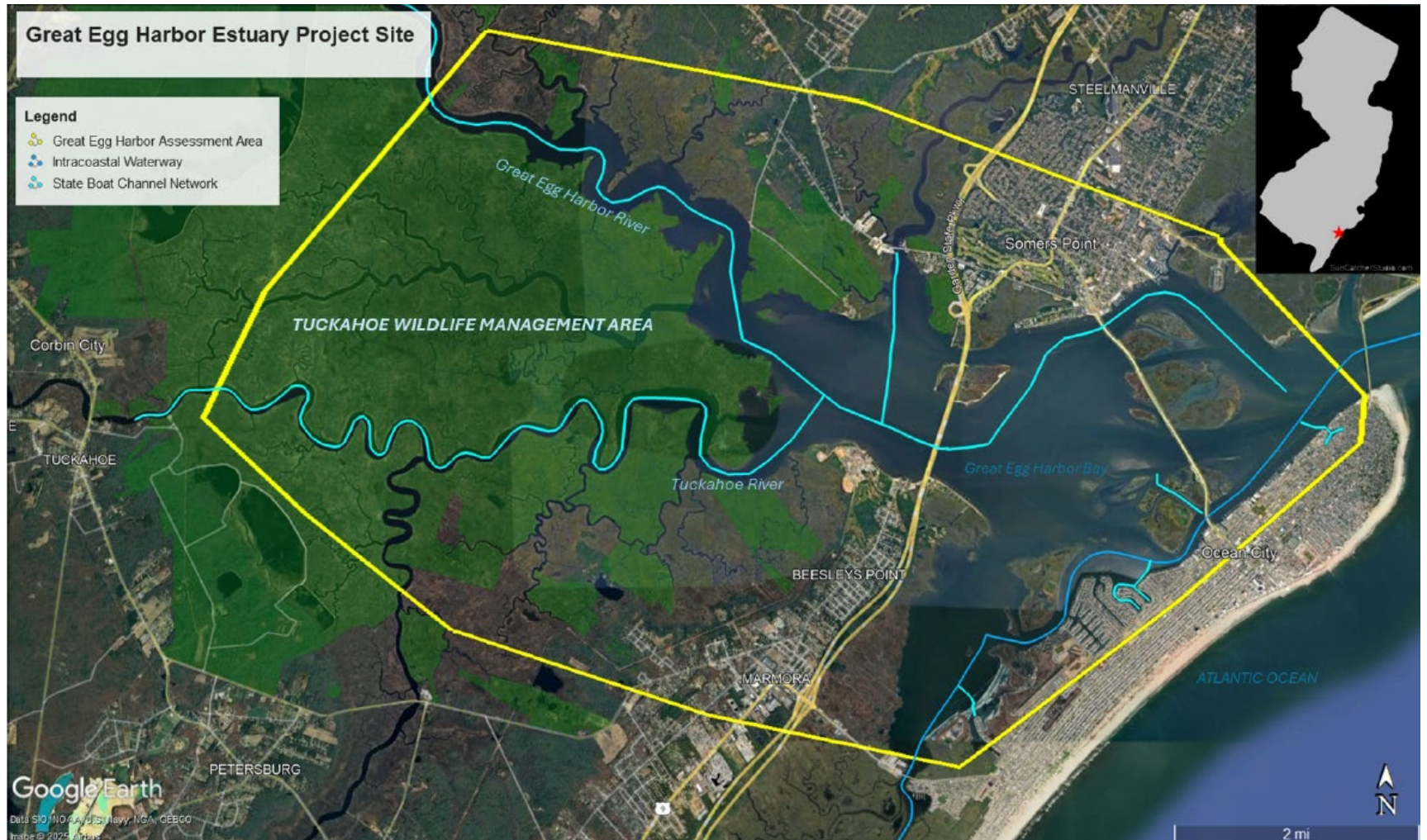
Matching Contributions Proposed \$476,788.00

Proposed Grant Period 06/01/ 2025 - 05/31/ 2028

Great Egg Harbor Estuary Project Site

Legend

- Great Egg Harbor Assessment Area
- Intracoastal Waterway
- State Boat Channel Network



Project Description

Assess the marsh complex within and contiguous to Tuckahoe Wildlife Management Area, create preliminary restoration designs for up to 5 Areas of Interest, and identify additional AOIs for future restoration. Project will benefit up to 1,000 marsh acres, the communities adjacent and upstream that are buffered by the marshes, and the boaters using the channels.

Project Abstract

Many NJ and other Mid-Atlantic marshes have been cut off from their historic, natural sediment supply and are sediment-starved. This project builds upon several NJ efforts and TNC's current NCRF project (and its team of academic, government, and NGO experts) to make marsh nourishment a standard practice in the state. The marsh complex will be assessed with a near-term outcome of preliminary designs (with regulator input) for up to 5 Areas of Interest in preparation for final design and permitting in concert with dredging by NJ Department of Transportation Office of Maritime Resources, which is responsible for maintaining all NJ state channels.

10. The 12 municipalities and the GEHWA of the GEH National Scenic and Recreational River Council (River Council) have been actively engaged with the NPS in the protection of the river resources for 25 years. The Council, which meets bimonthly, will be engaged in this project to inform community benefits, dredging needs, habitat issues, resilience concerns, and opportunities for collaboration.



B. Implementation Timeline and Milestones:

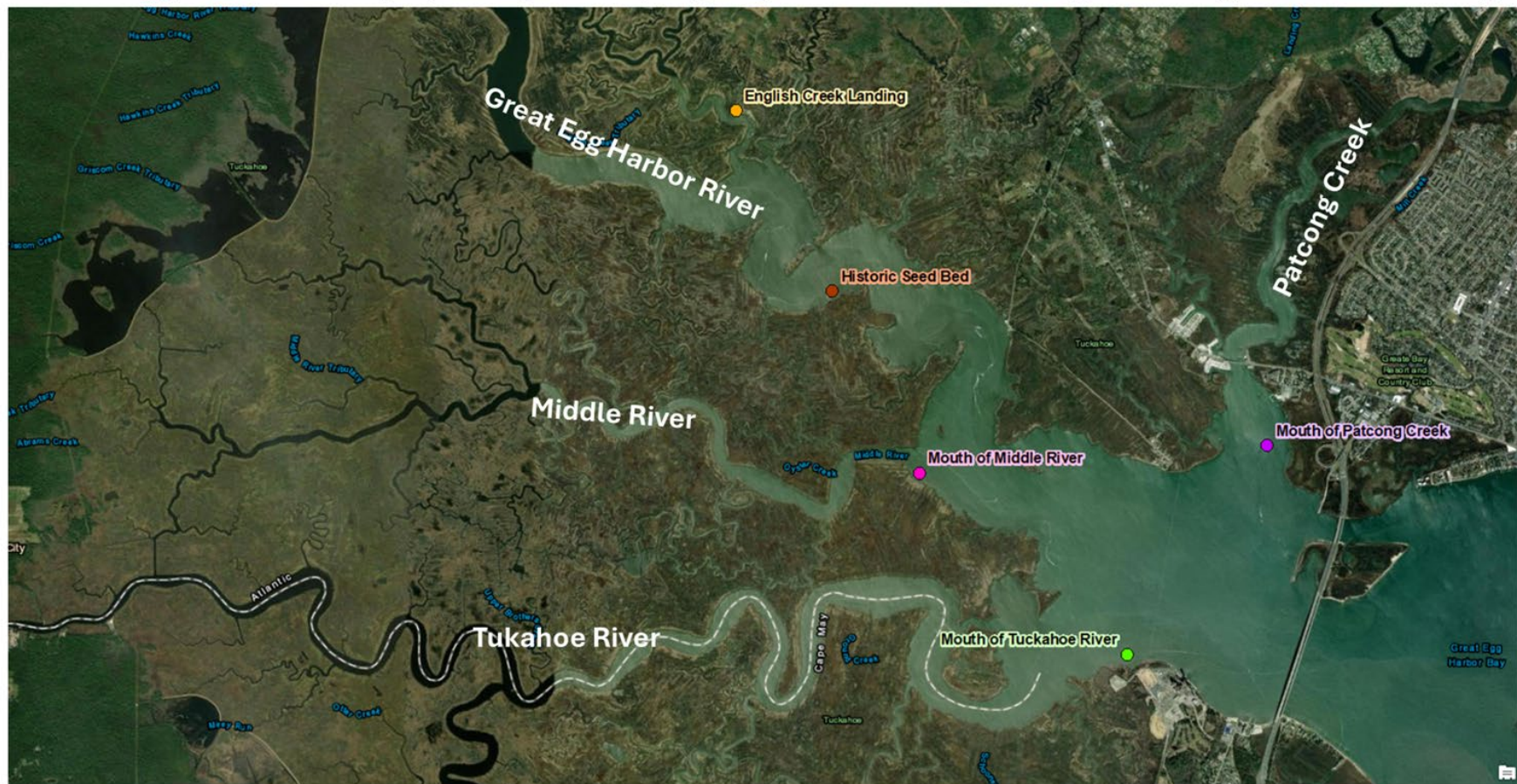
[illegible]

Oyster Spat Project

Every other week, Tom, Dave Brown, Julie, Fred, and Brooke have been going out and collecting and counting oyster spat in 4 locations in the estuary.



Great Egg Harbor Estuary Oyster Spat Sampling Project Locations, working out of English Creek Landing



Oyster Spat Collection on the Great Egg Harbor River 7/24/25



Oyster Spat Collection on the Great Egg Harbor River 7/24/25







On August 2nd, Brooke and Bill Handley ran the Upper Township Paddle race fundraiser with the Upper Township Rescue Squad



It was a beautiful day with good participation, but we hope for more next year!

7/22 Lake Lenape Dam Pictures











2006 Fish Ladder



Enjoy a virtual Sunset cruise of the Tuckahoe River

